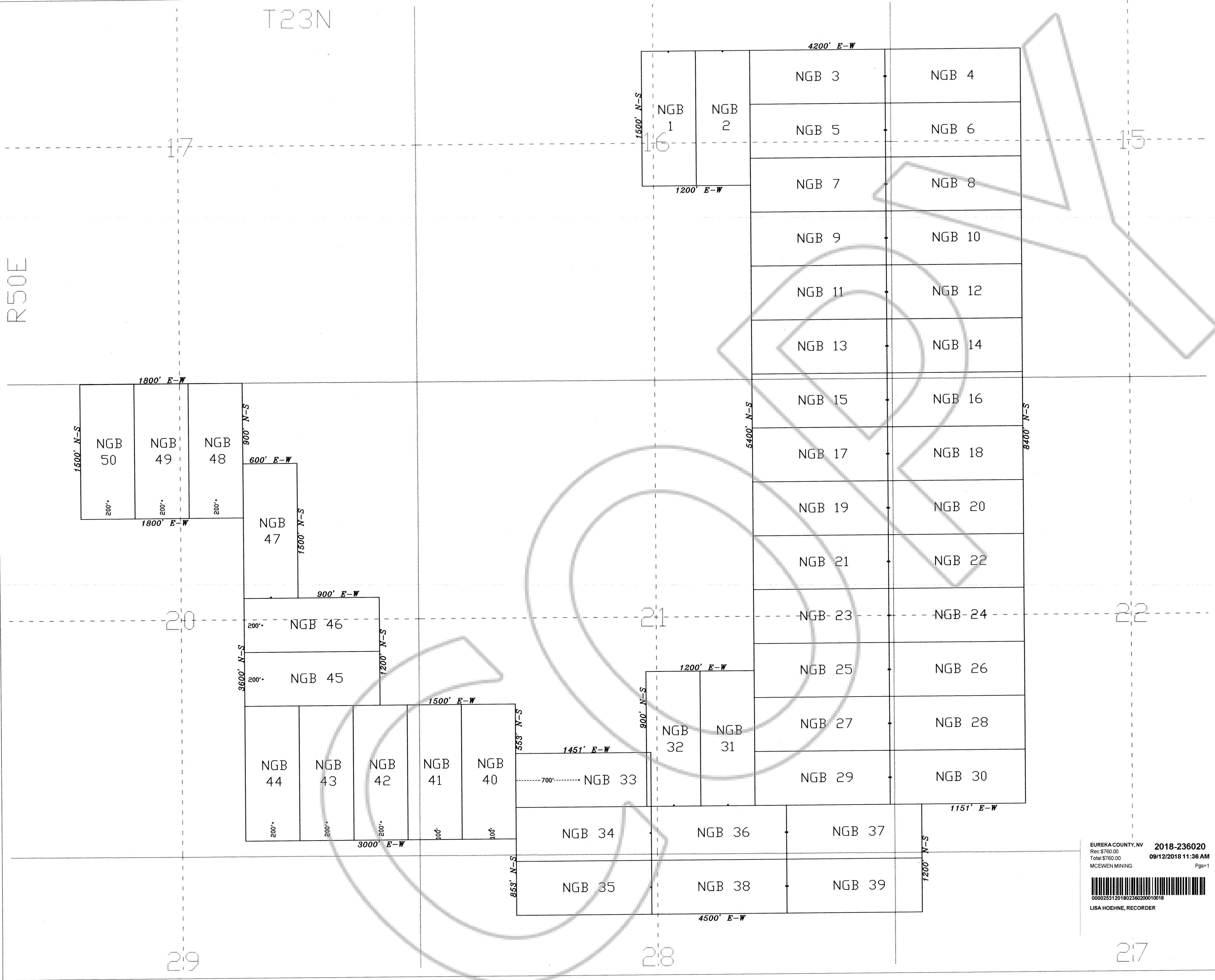
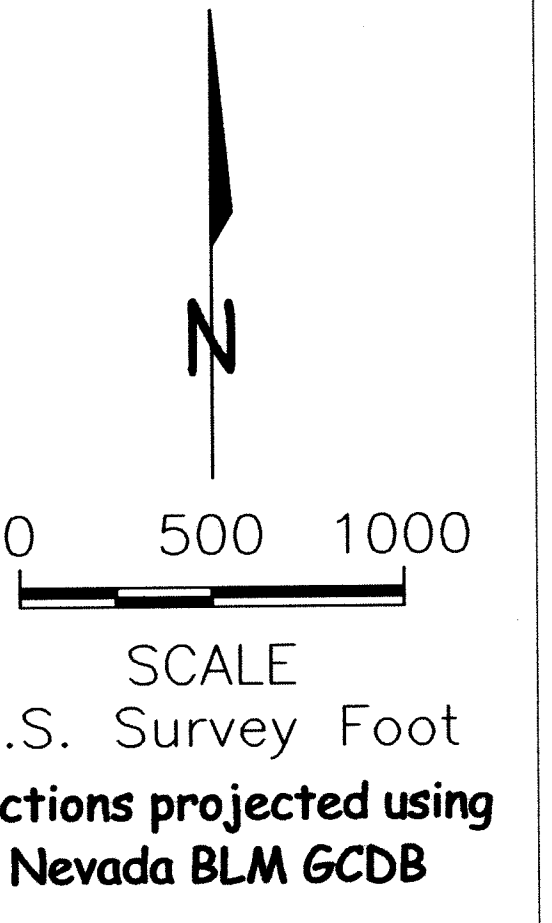
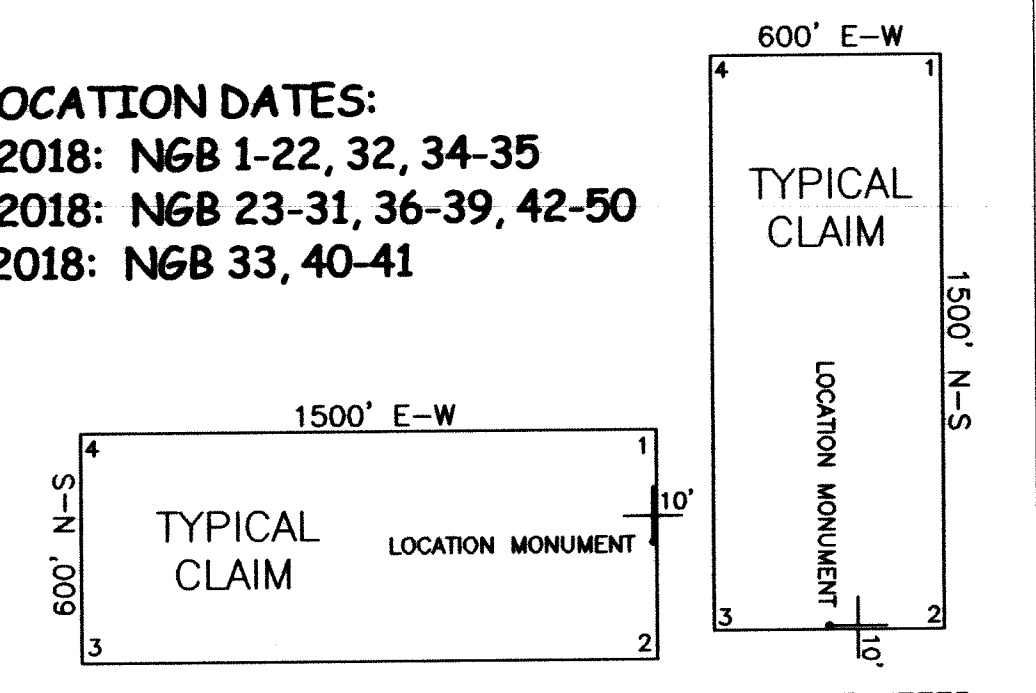


T23N

R50E



CLAIM LOCATION DATES:
 July 29, 2018: NGB 1-22, 32, 34-35
 July 30, 2018: NGB 23-31, 36-39, 42-50
 July 31, 2018: NGB 33, 40-41



ALL CLAIMS ARE 1500' x 600' UNLESS OTHERWISE NOTED.
 ALL MONUMENTS ARE 2' x 2' x 4' WOODEN POSTS.
 LOCATION MONUMENTS ARE SET 10' INSIDE CLAIM BOUNDARY UNLESS OTHERWISE NOTED.

CLAIM TIES:
 The SW corner of NGB 44 is located approximately 182 feet north and 8608 feet east of the NW corner of Section 30, T23N, R50E, M.D.M.

EUREKA COUNTY, NV 2018-236020
 Rec \$760.00
 Total \$760.00
 MCEWEN MINING 09/12/2018 11:36 AM
 Pgs=1
 LISA HOEHNE, RECORDER

LODE MINING CLAIM MAP
NGB 1-50
 T23N, R50E, M.D.M.
 EUREKA COUNTY, NEVADA

Locator: **WKGUS LLC**
 2215 N. 5th St.
 Elko, Nevada 89801

Drawn By: ARD | **August 2018** | **Sheet 1 of 1**

29

28

27