

T22N 17

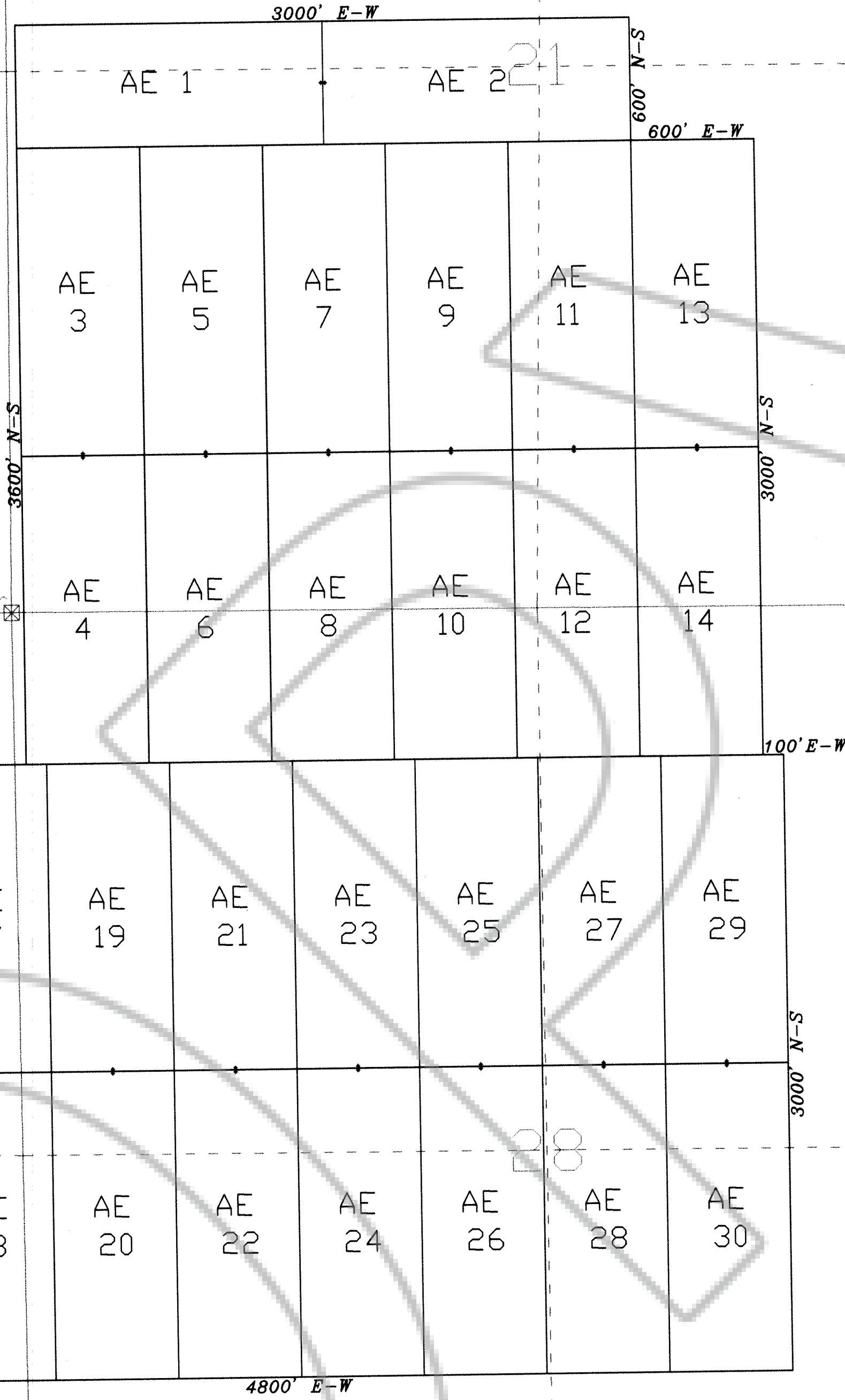
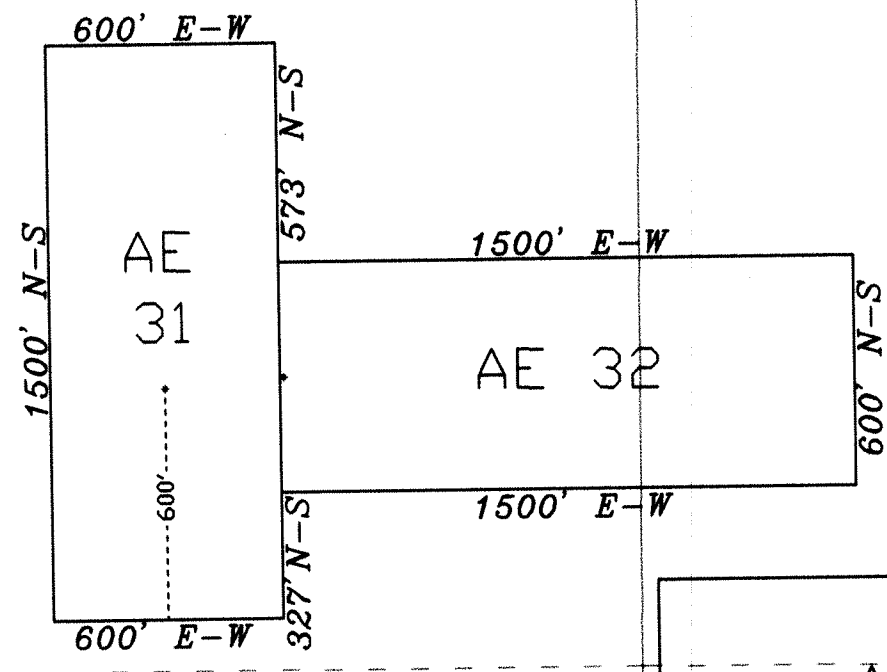
16

R51E



0 500 1000

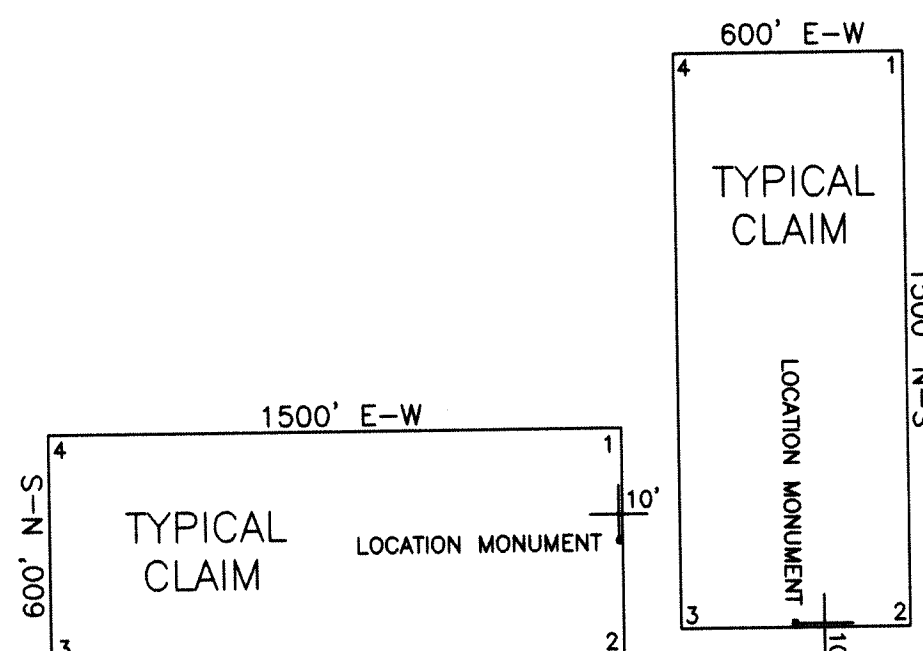
SCALE
U.S. Survey Foot
Sections projected using
Nevada BLM GCDB



CLAIM LOCATION DATE:
August 13, 2018: AE 1-32

NOTE:
The Location Monument for AE 31 is located approximately 600 feet north of the south claim endline along the centerline of the claim.

CLAIM TIES:
The NE corner of AE 4 is located approximately 760 feet north and 660 feet east of the NW corner of Section 28, T22N, R51E, M.D.M.
The NE corner of AE 32 is located approximately 3700 feet north and 580 feet east of the NW corner of Section 28, T22N, R51E, M.D.M.



ALL CLAIMS ARE 1500' x 600' UNLESS OTHERWISE NOTED.
ALL MONUMENTS ARE 2' x 4' WOODEN POSTS.
LOCATION MONUMENTS ARE SET 10' INSIDE CLAIM BOUNDARY UNLESS OTHERWISE NOTED.

EUREKA COUNTY, NV 2018-236053
Rec: \$490.00
Total: \$490.00
MCEWEN MINING
09/12/2018 11:47 AM
Pg: 1 of 1



LISA HOEHNE, RECORDER

LODE MINING CLAIM MAP
AE 1-32
T22N, R51E, M.D.M.
EUREKA COUNTY, NEVADA

Locator: **McEwen Mining Nevada Inc.**
2215 N. 5th St.
Elko, Nevada 89801

Drawn By: ARD | September 2018 | Sheet 1 of 1