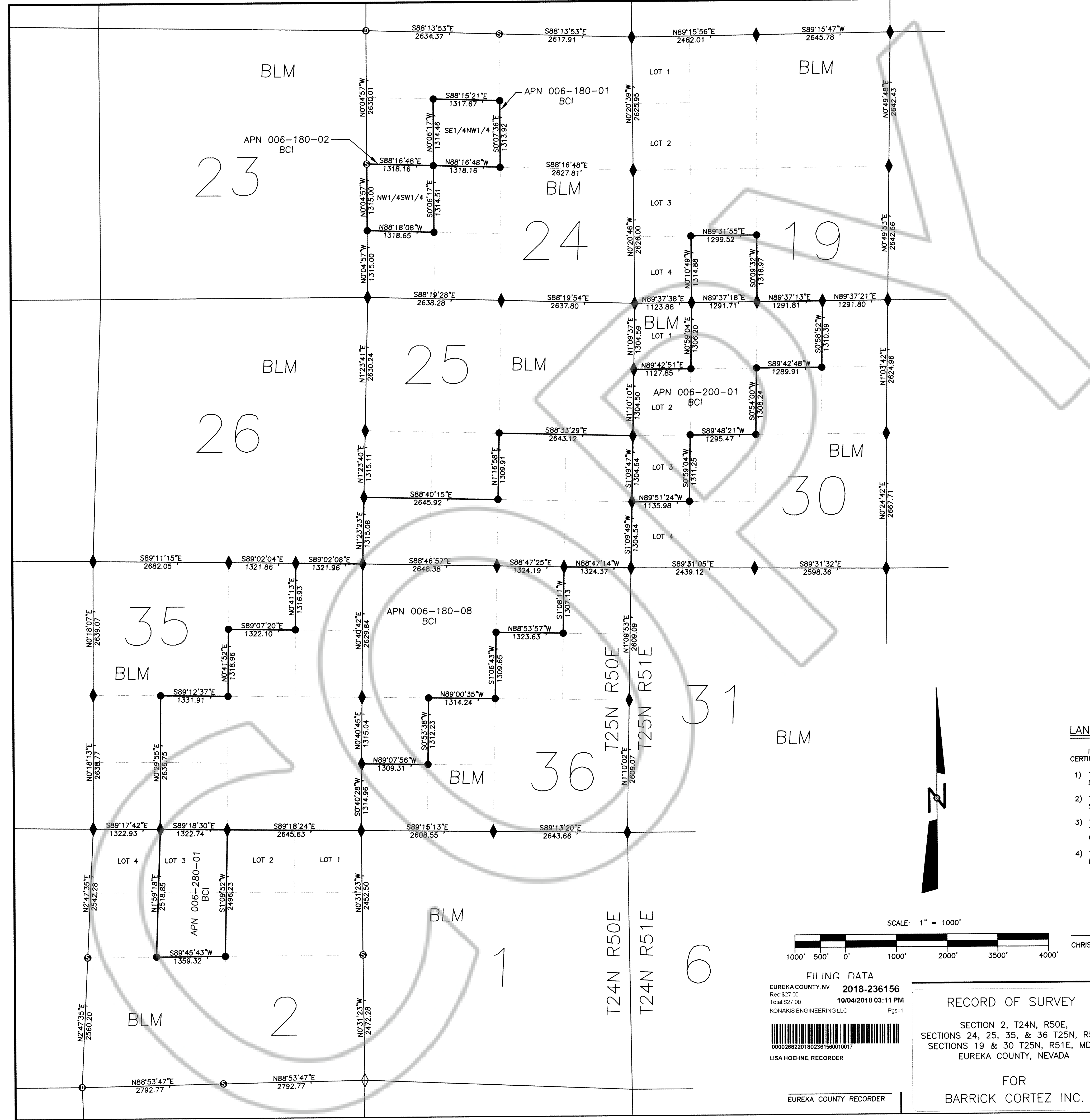


236156  
T24N R50E

236156  
T24N R50E



**BASIS OF BEARINGS:**  
 THE BASIS OF BEARINGS FOR THIS SURVEY IS NAD27, NEVADA STATE PLANE EAST ZONE (2701), AS DETERMINED BY GPS STATIC SURVEY DATA PROCESSED VIA THE NATIONAL GEODETIC ONLINE POSITIONING USER SERVICE (OPUS). THIS SURVEY WAS CONDUCTED IN US SURVEY FEET UNITS.

- LEGEND:**
- ◆ = FOUND BRASS CAP - GOVERNMENT PUBLIC LAND SURVEY CORNER. (REFER TO SURVEY PLAT AND NOTE REFERENCE(S) 1.5, 1.6, 1.8, AND 1.9 BELOW)
  - ◇ = FOUND CHARRED POST - GOVERNMENT PUBLIC LAND SURVEY CORNER. (REFER TO SURVEY PLAT AND NOTE REFERENCE(S) 1.1 BELOW)
  - = SET 5/8" REBAR W/ ALUMINUM CAP PLS23386 AND STEEL FENCE POST GUARD.
  - ⊙ = POSITION BY SINGLE PROPORTION. SET 5/8" REBAR W/ ALUMINUM CAP PLS23386 AND STEEL FENCE POST GUARD.
  - ⊖ = POSITION BY DOUBLE PROPORTION. SET 5/8" REBAR W/ ALUMINUM CAP PLS23386 AND STEEL FENCE POST GUARD.
  - = SECTION LINE

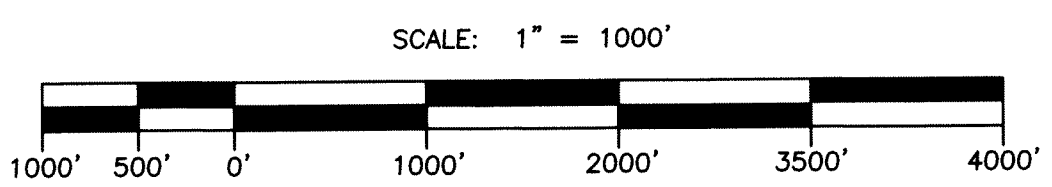
- NOTES:**
1. GOVERNMENT SURVEY PLAT AND FIELD NOT REFERENCES:
    - 1.1) T.24N., R.50E., M.D.M., ORIGINAL PLAT APPROVED MAY 13, 1879.
    - 1.2) T.24N., R.50E., M.D.M., PROTRACTION PLAT APPROVED JANUARY 13, 1964.
    - 1.3) T.24N., R.51E., M.D.M., ORIGINAL PLAT APPROVED MAY 13, 1879.
    - 1.4) T.25N., R.50E., M.D.M., ORIGINAL PLAT APPROVED MAY 13, 1879.
    - 1.5) T.25N., R.50E., M.D.M., SURVEY PLAT APPROVED SEPTEMBER 29, 2014.
    - 1.6) T.25N., R.50E., M.D.M., FIELD NOTES APPROVED SEPTEMBER 29, 2014.
    - 1.7) T.25N., R.51E., M.D.M., ORIGINAL PLAT APPROVED MAY 13, 1879.
    - 1.8) T.25N., R.51E., M.D.M., SURVEY PLAT APPROVED SEPTEMBER 29, 2014.
    - 1.9) T.25N., R.51E., M.D.M., FIELD NOTES APPROVED SEPTEMBER 29, 2014.
  2. BCI PROPERTY ACREAGE(S):
    - APN 006-180-01 = 39.74 ACRES
    - APN 006-180-02 = 39.77 ACRES
    - APN 006-180-08 = 836.89 ACRES
    - APN 006-200-01 = 223.45 ACRES
    - APN 006-280-01 = 77.17 ACRES
  3. BCI PROPERTY VESTING DOCUMENT GRANT BARGAIN SALE DEED, RECORDED IN THE OFFICE OF THE EUREKA COUNTY RECORDER AS FILE NO. 218584, ON SEPTEMBER 13, 2011.
  4. POSITIONAL CERTAINTY: SEE NAC 625.651 TO NAC 625.795. THE MONUMENT POSITIONS MEET POSITIONAL CERTAINTY OF LOW RURAL LAND BOUNDARY SURVEYS UNDER NAC 625.666.

APN XXX EUREKA COUNTY ASSESSOR'S PARCEL NUMBER  
 BCI SURFACE OWNER: BARRICK CORTEZ INC.  
 BLM SURFACE OWNER: USA (BUREAU OF LAND MANAGEMENT)

**LAND SURVEYOR'S CERTIFICATE:**

I, CHRISTOPHER S. KONAKIS, A PROFESSIONAL LAND SURVEYOR LICENSED IN THE STATE OF NEVADA, CERTIFY THAT:

- 1) THIS PLAT REPRESENTS THE RESULTS OF A SURVEY PERFORMED UNDER MY DIRECT SUPERVISION AND DIRECTION AT THE INSTANCE OF BARRICK CORTEZ INC.
- 2) THE LANDS SURVEYED LIE WITHIN T.24-25N., R.50-51E., M.D.M., EUREKA COUNTY, NEVADA. THE SURVEY WAS COMPLETED ON AUGUST 28, 2018.
- 3) THIS PLAT COMPLIES WITH THE APPLICABLE STATE STATUTES AND ANY LOCAL ORDINANCES IN EFFECT ON THE DATE THAT THE SURVEY WAS COMPLETED, AND THE SURVEY WAS CONDUCTED IN ACCORDANCE WITH CHAPTER 625 OF THE NEVADA ADMINISTRATIVE CODE.
- 4) THE MONUMENTS DEPICTED ON THE PLAT ARE OF THE CHARACTER SHOWN, OCCUPY THE POSITIONS INDICATED, AND ARE OF SUFFICIENT NUMBER AND DURABILITY.



**FILING DATA**  
 EUREKA COUNTY, NV 2018-236156  
 Rec \$27.00 10/04/2018 03:11 PM  
 Total \$27.00  
 KONAKIS ENGINEERING LLC Pgs=1  
 LISA HOEHNE, RECORDER

**RECORD OF SURVEY**  
 SECTION 2, T24N, R50E,  
 SECTIONS 24, 25, 35, & 36 T25N, R50E,  
 SECTIONS 19 & 30 T25N, R51E, MDM,  
 EUREKA COUNTY, NEVADA  
 FOR  
 BARRICK CORTEZ INC.

**KONAKIS ENGINEERING, LLC**  
 CIVIL & WATER RESOURCES ENGINEERING  
 LAND SURVEYING  
 (775) 738-5319  
 225 SILVER STREET, STE. 106  
 ELKO, NEVADA 89801

