

R50E

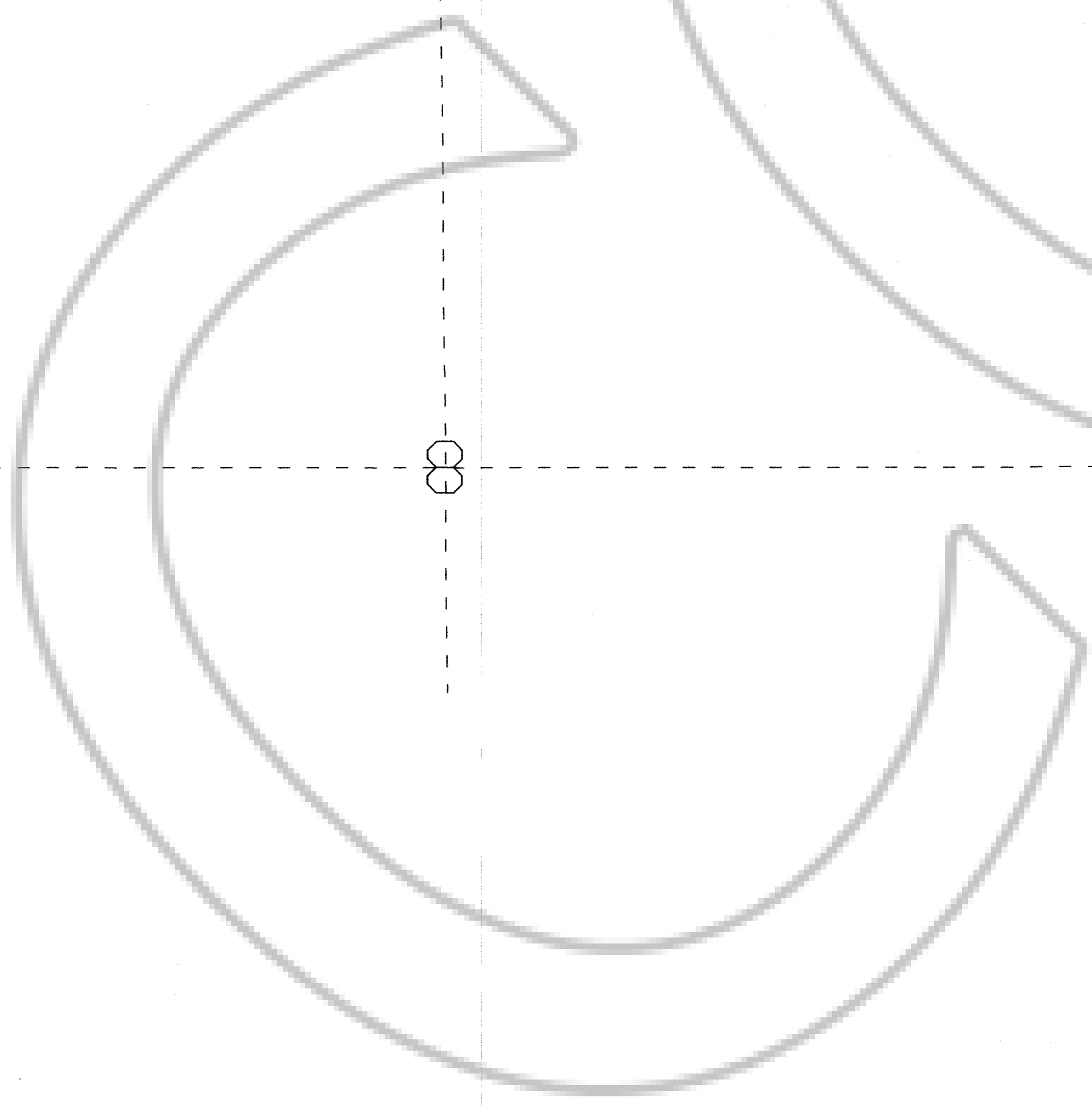
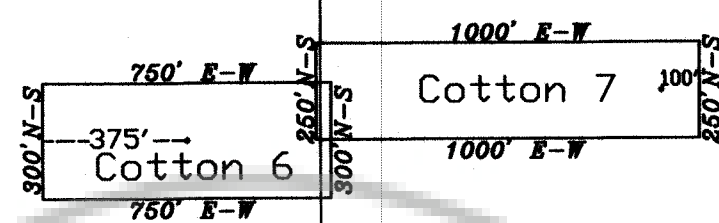
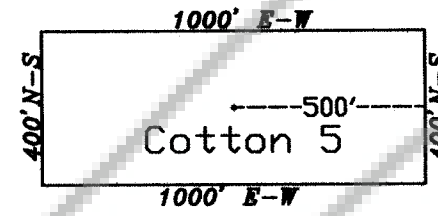
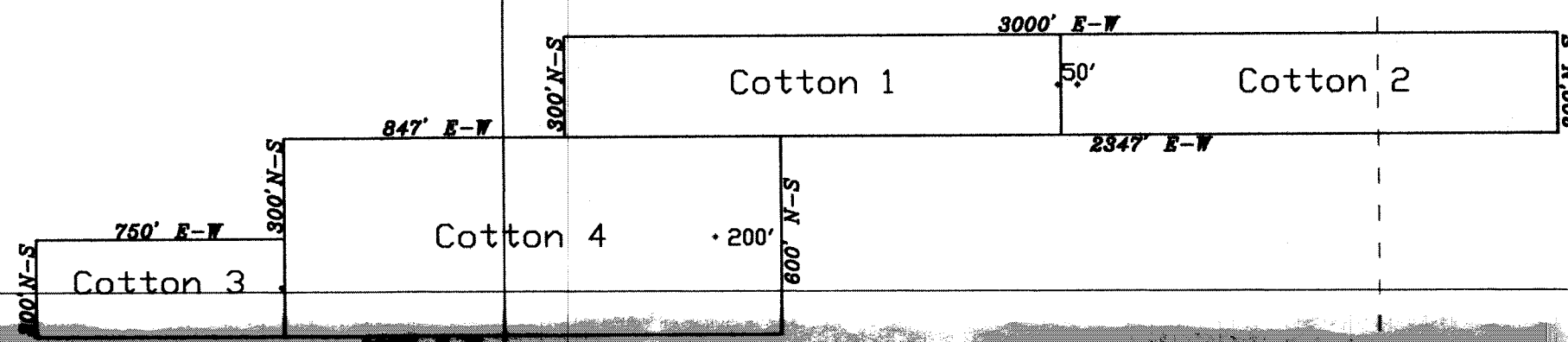
R50E

T23N  
T22N

32

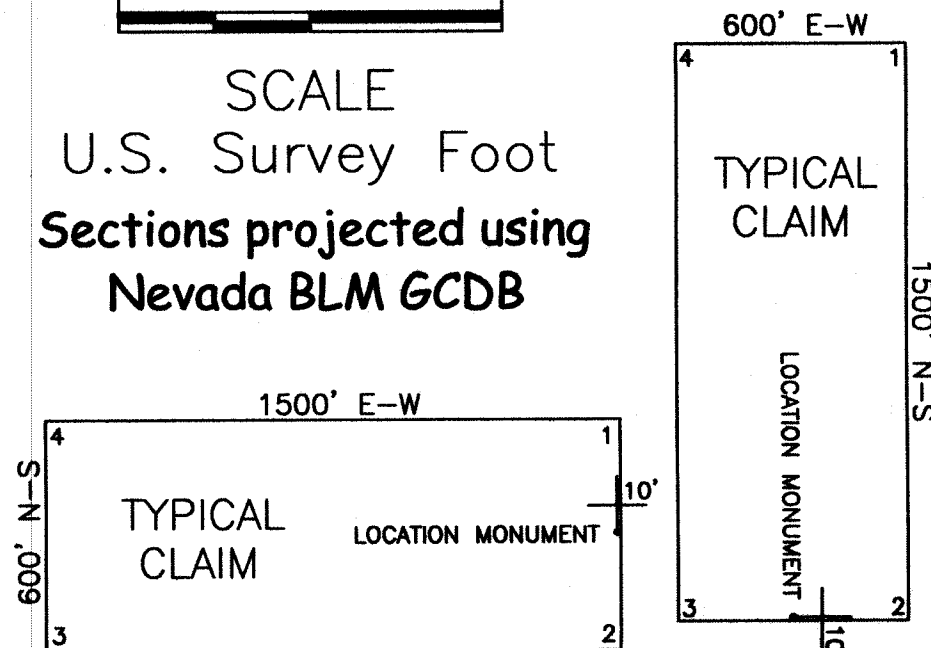
33

34



0 500 1000

SCALE  
U.S. Survey Foot  
Sections projected using  
Nevada BLM GCDB



ALL CLAIMS ARE 1500' x 600' UNLESS OTHERWISE NOTED.  
ALL MONUMENTS ARE 2" x 2" x 4' WOODEN POSTS.  
LOCATION MONUMENTS ARE SET 10' INSIDE CLAIM BOUNDARY  
UNLESS OTHERWISE NOTED.

EUREKA COUNTY, NV 2018-236297  
Rec \$115.00  
Total \$115.00 10/31/2018 03:00 PM  
GOLDEN PICK LLC Pgs=1



LISA HOEHNE, RECORDER

CLAIM LOCATION DATE:  
October 27, 2018: COTTON 1-7

CLAIM TIES:

The Location Monument of COTTON 1 is located approximately 4,660 feet south and 17,486 feet east of the NW corner of Section 36, T23N, R49E, M.D.M.  
 The Location Monument of COTTON 2 is located approximately 4,660 feet south and 17,546 feet east of the NW corner of Section 36, T23N, R49E, M.D.M.  
 The Location Monument of COTTON 3 is located approximately 5,260 feet south and 15,139 feet east of the NW corner of Section 36, T23N, R49E, M.D.M.  
 The Location Monument of COTTON 4 is located approximately 5,110 feet south and 16,449 feet east of the NW corner of Section 36, T23N, R49E, M.D.M.  
 The Location Monument of COTTON 5 is located approximately 7,380 feet south and 17,108 feet east of the NW corner of Section 36, T23N, R49E, M.D.M.  
 The Location Monument of COTTON 6 is located approximately 9,052 feet south and 15,474 feet east of the NW corner of Section 36, T23N, R49E, M.D.M.  
 The Location Monument of COTTON 7 is located approximately 8,924 feet south and 16,711 feet east of the NW corner of Section 36, T23N, R49E, M.D.M.

LODE MINING CLAIM MAP  
**COTTON 1-7**  
 T22-23N, R50E, M.D.M.  
 EUREKA COUNTY, NEVADA

Locator: **GOLDEN PICK LLC**  
 2215 N. 5th St.  
 Elko, Nevada 89801

Drawn By: ARD    October 2018    Sheet 1 of 1