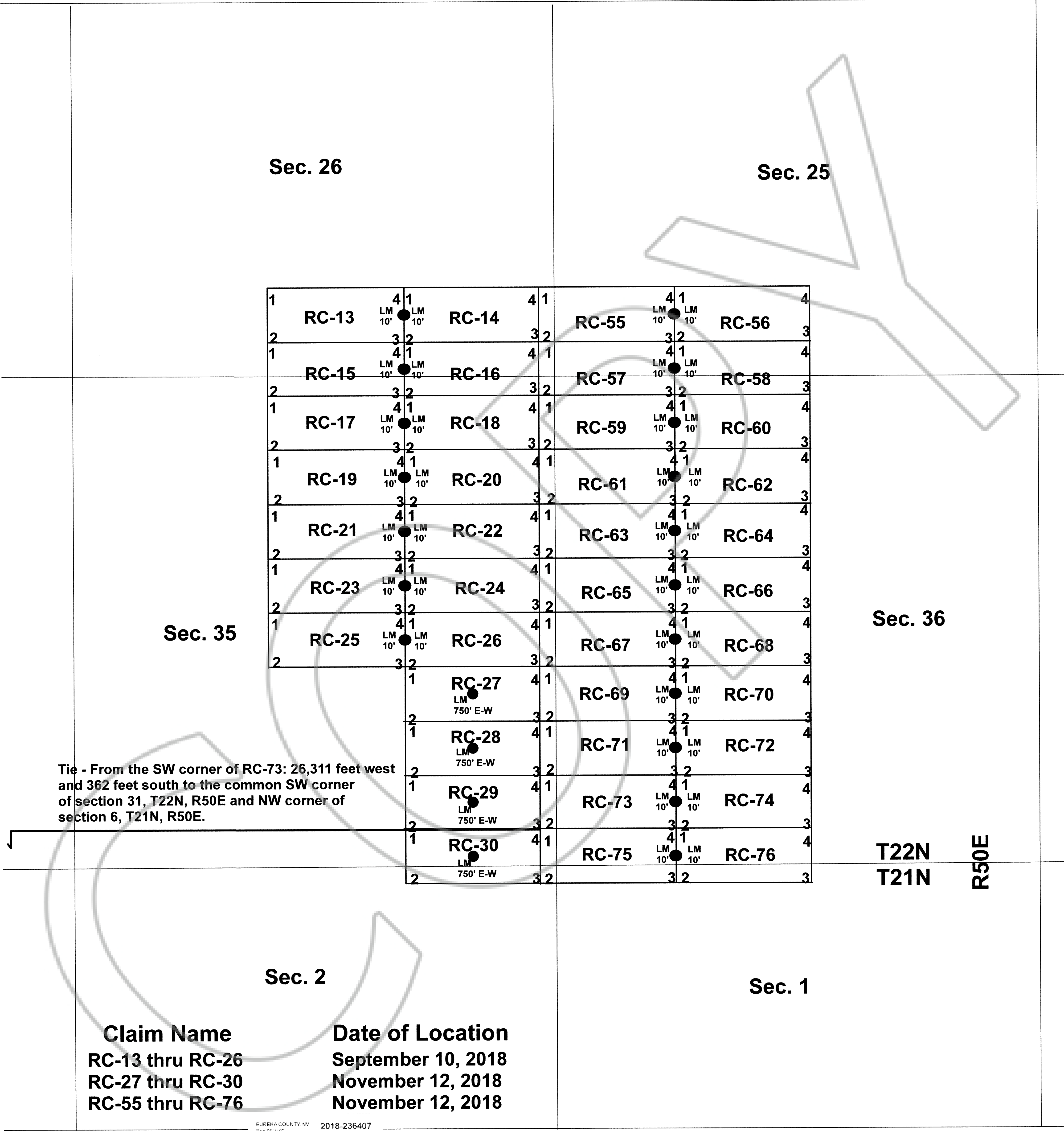


Map of RC-13 through RC-30 and RC-55 through RC-76 Lode Claims, Sections 25, 26, 35 and 36, T22N, R50E and Sections 1 and 2, T21N, R50E, Eureka County, Nevada, Gold Bar District.

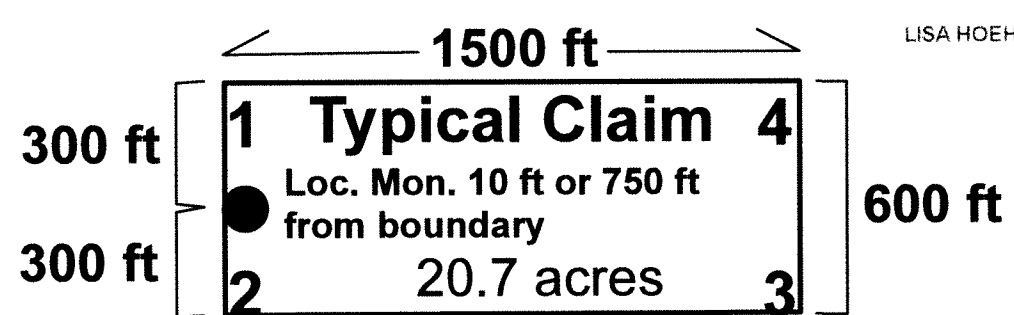
Located by Intermont Exploration, LLC, September 10 and November 12, 2018, 1110 Lay St., Winnemucca, Nevada 89445



Tie - From the SW corner of RC-73: 26,311 feet west and 362 feet south to the common SW corner of section 31, T22N, R50E and NW corner of section 6, T21N, R50E.

Claim Name	Date of Location
RC-13 thru RC-26	September 10, 2018
RC-27 thru RC-30	November 12, 2018
RC-55 thru RC-76	November 12, 2018

EUREKA COUNTY, NV 2018-236407
 Rec SE10.00 11/16/2018 02:10 PM
 Total \$610.00
 INTERMONT EXPLORATION, LLC Figs=1
 00002975201802364070010010
 LISA HOEHNE, RECORDER



- 1 NW corner
 - 2 SW corner
 - 3 SE corner
 - 4 NE corner
- All claims are 600 x 1500 ft

