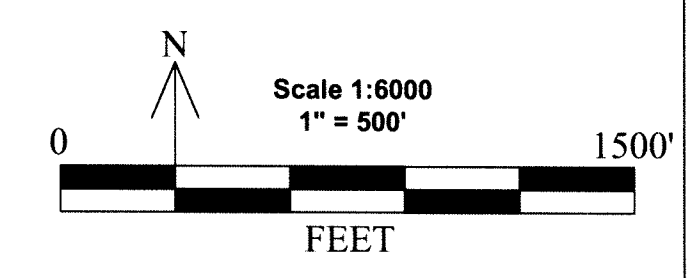
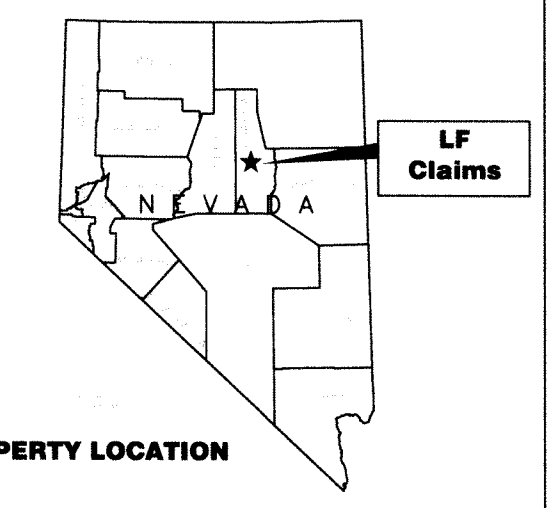
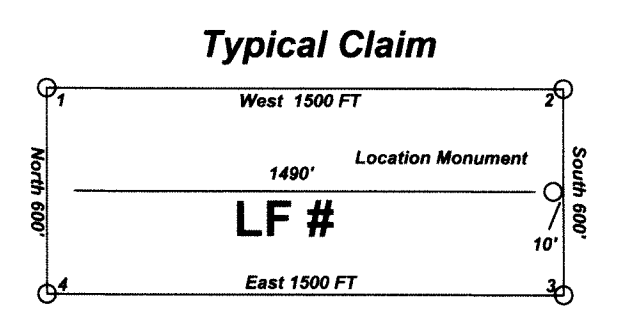


Location Map for
LF 1-5
Lode Mining Claims

Locator:
Kinross Gold U.S.A., Inc.
5075 South Syracuse St., 8th Floor
Denver, CO. 80237

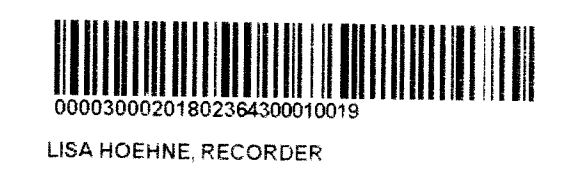
LF lode claims 1-5 were located on September 7, 2018 in Section 1, Township 23 North, Range 50 East and Section 1, Township 23.5 North, Range 50 East and in Sections 6 Township 23 North, Range 51 East MDB&M in Eureka County, Nevada.

Notes:
Location Monuments are set 10' from claim end lines unless noted otherwise. All location and corner monuments are 2" X 2"X 4' wooden posts with scribed metal tags. All claims are 600' by 1500' unless noted otherwise.



LOCATION MAP for LF 1-5 Lode Mining Claims
Kinross Gold U.S.A., Inc. 5075 South Syracuse St., 8th Floor Denver, CO. 80237
LF_1-5_Claims_N27Z11FLdwg October 22, 2018
Drawn By: G.I.S. Land Services
Located By: T&T Exploration L.L.C. Datum: 1927, Projection: UTM, Zone: 11, Units: Feet

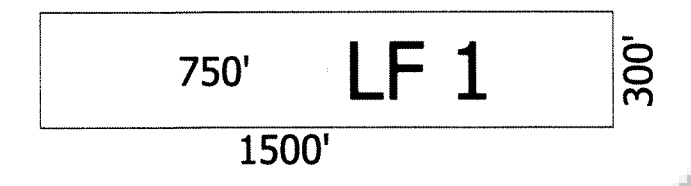
EUREKA COUNTY, NV 2018-236430
Rec: \$95.00 11/20/2018 02:10 PM
Total \$85.00
KINROSS GOLD USA INC Pgs:1



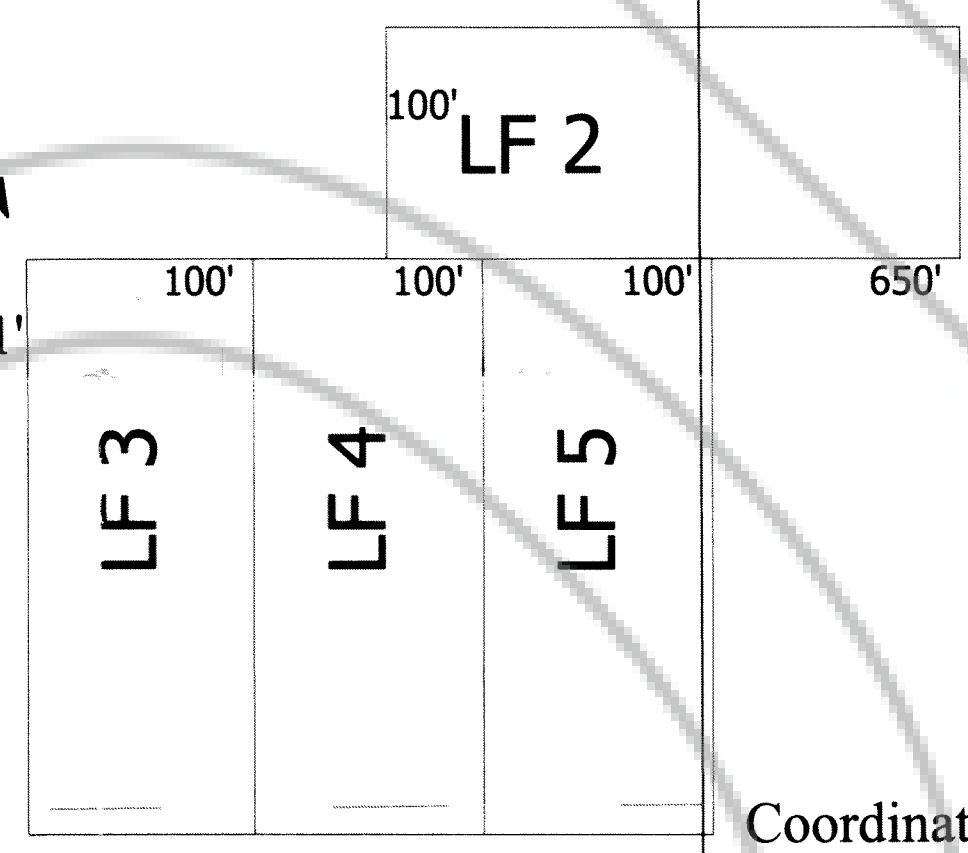
T23HN R50E
T23N R51E

Coordinates for the NE
Corner of LF 1 are:
Datum: 1927
Projection: UTM
Easting: 560,649 E
Northing: 4,416,598 N

The NW Corner of LF 1
bears S24°4'E and is 22,081'
from the NW corner of
Section 22 T24N R50E



The NW Corner of LF 3
bears S22°36'E and is 24,411'
from the NW corner of
Section 22 T24N R50E



Coordinates for the SE
Corner of LF 5 are:
Datum: 1927
Projection: UTM
Easting: 560,862 E
Northing: 4,415,547 N

T23HN R50E
T23N R50E

Note:
Datum: 1927
Projection: UTM
Units: US Survey Feet
All Bearings are reported in UTM Grid North.
All Degrees and Minutes are reported to the nearest
minute.
All Distances are reported in feet to the nearest foot.

The depicted Township, Range and Sections are a
product of the Bureau of Land Management,
Cadastral Survey. Commonly known as the PLSS,
CadNSDI that originates from the BLM GCDB
program.