

T22N

T22N

R50E
R51E

1

6

5

12

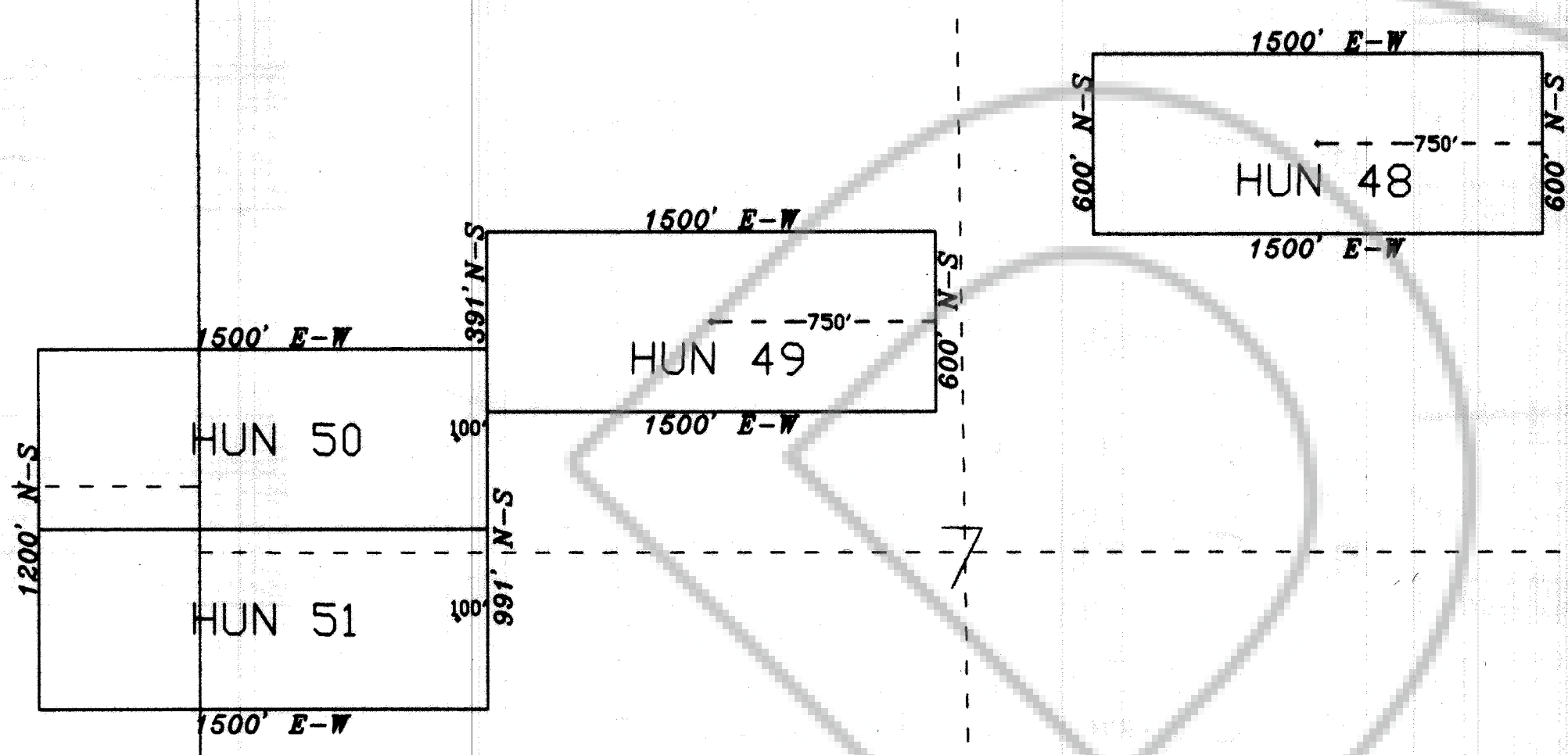
7

8

13

18

17



0 500 1000

SCALE

U.S. Survey Foot

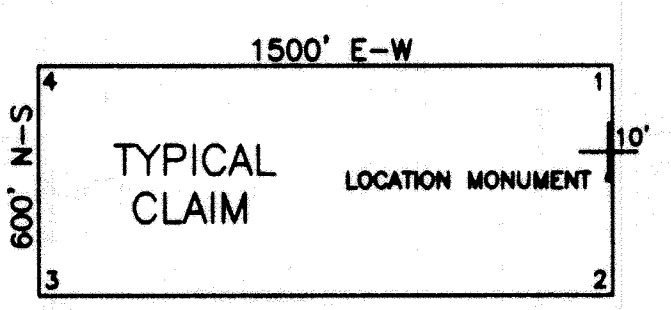
Sections projected using Nevada BLM GCDB

CLAIM LOCATION DATES:
September 23, 2018: HUN 48-51

CLAIM TIES:

The SE corner of HUN 48 is located approximately 14252 feet north and 6006 feet west of the NW corner of Section 28, T22N, R51E, M.D.M.
The SE corner of HUN 51 is located approximately 12671 feet north and 9534 feet west of the NW corner of Section 28, T22N, R51E, M.D.M.

EUREKA COUNTY, NV 2018-236494
 Rec: \$70.00 12/08/2018 01:06 PM
 Total: \$70.00
 MCEWEN MINING NEVADA INC
 LISA HOEHNE, RECORDER



ALL CLAIMS ARE 1500' x 600' UNLESS OTHERWISE NOTED.
 ALL MONUMENTS ARE 2" x 2" x 4' WOODEN POSTS.
 LOCATION MONUMENTS ARE SET 10' INSIDE CLAIM BOUNDARY UNLESS OTHERWISE NOTED.

LODE MINING CLAIM MAP
HUN 48-51
 T22N, R50-51E, M.D.M.
 EUREKA COUNTY, NEVADA

Locator: **GOLDEN PICK LLC**
 2215 N. 5th St.
 Elko, Nevada 89801

Drawn By: ARD November 2018 Sheet 1 of 1