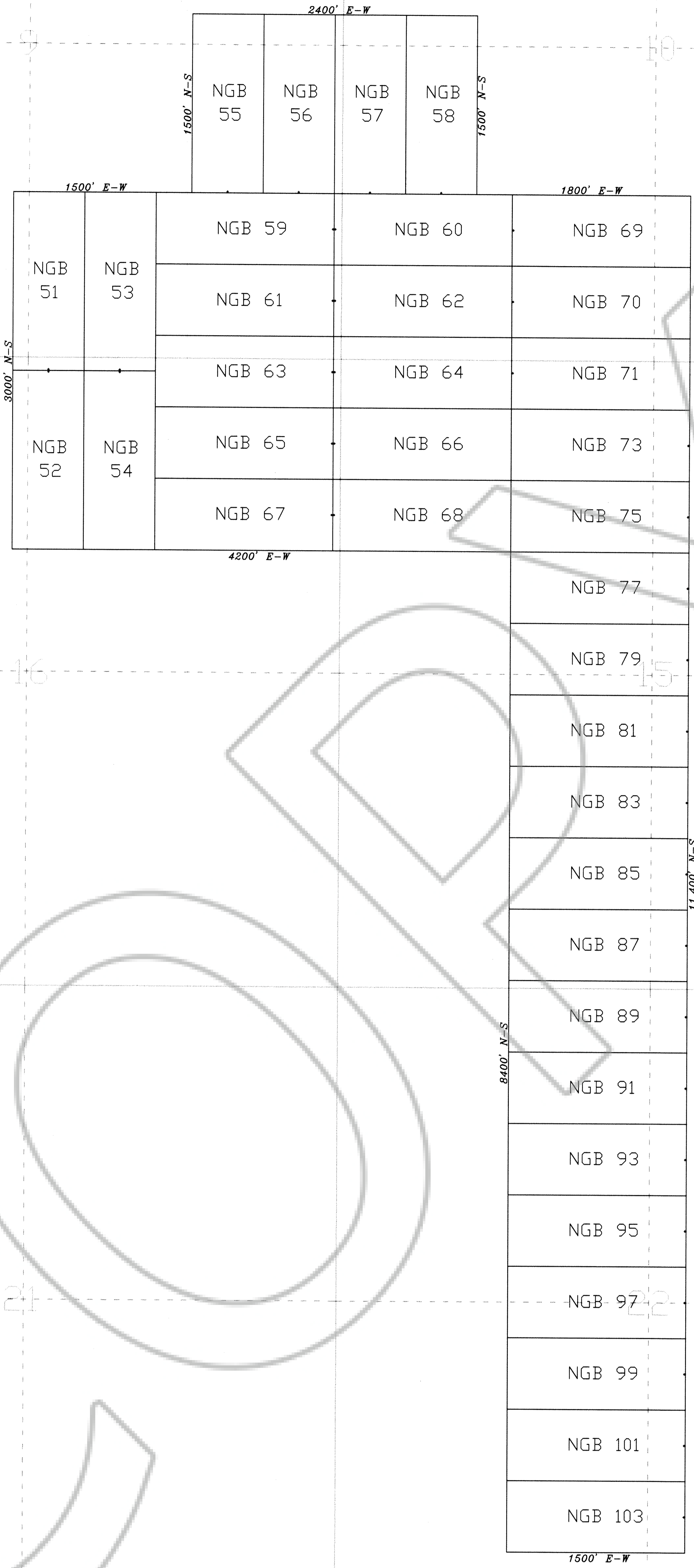


T23N



0 500 1000

SCALE
U.S. Survey Foot
Sections projected using
Nevada BLM GCDB

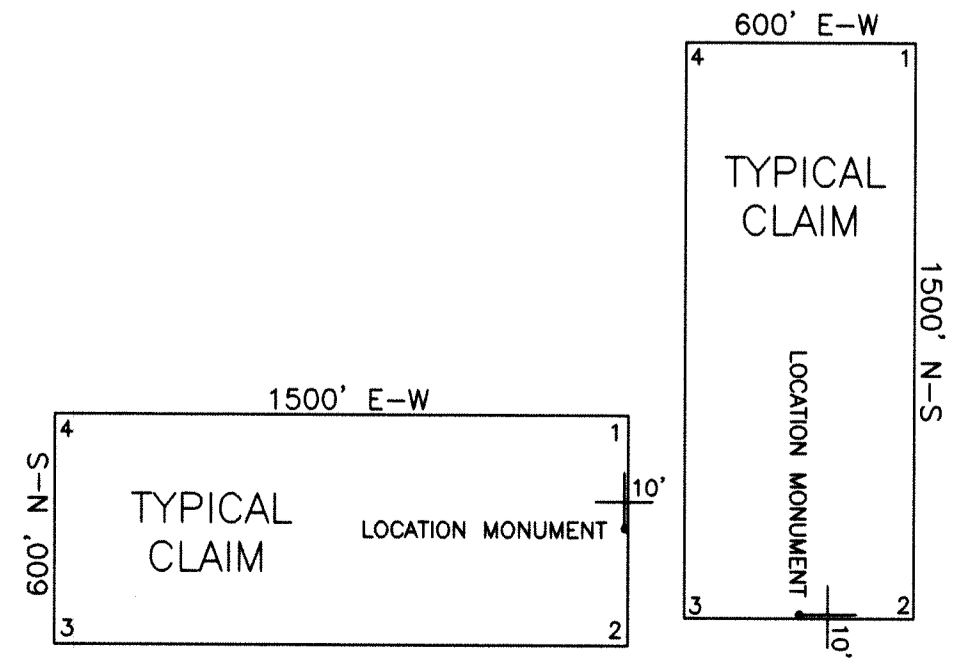


EUREKA COUNTY, NV 2018-237028
 \$1,200.00 \$10.00
 Total \$1,210.00 12/06/2018 03:25 PM
 MCEWEN MINING NEVADA INC Pgs:2
 0000361020180237028002029
 LISA HOEHNE, RECORDER



CLAIM LOCATION DATES:
 October 24, 2018: NGB 72-121, 124-125, 128-130
 October 25, 2018: NGB 55-71, 122-123, 126-127
 October 26, 2018: NGB 51-54

CLAIM TIES:
 The SE corner of NGB 103 is located approximately 530 feet north and 18,759 feet east of the NW corner of Section 30, T23N, R50E, M.D.M.



ALL CLAIMS ARE 1500' x 600' UNLESS OTHERWISE NOTED.
 ALL MONUMENTS ARE 2" x 2" x 4" WOODEN POSTS.
 LOCATION MONUMENTS ARE SET 10' INSIDE CLAIM BOUNDARY UNLESS OTHERWISE NOTED.

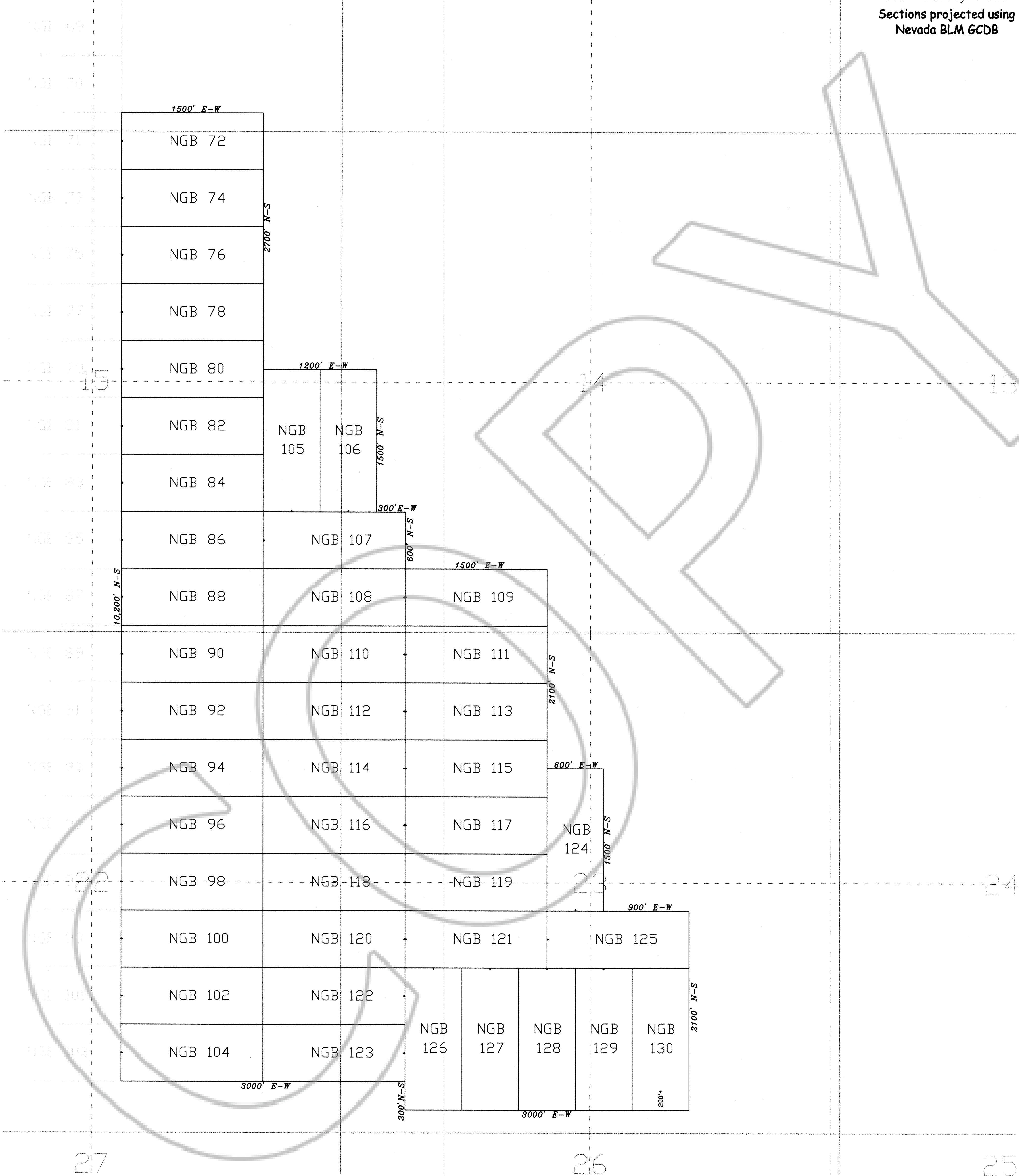
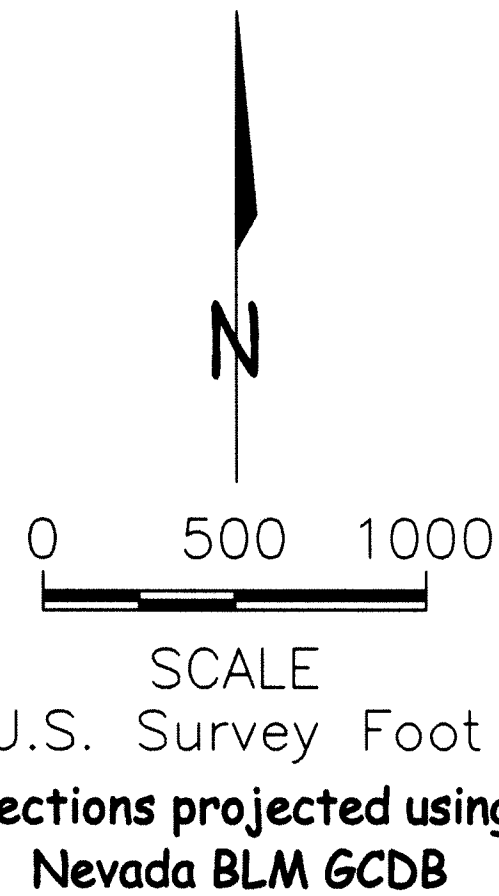
LODE MINING CLAIM MAP
NGB 51-130
 T23N, R50E, M.D.M.
 EUREKA COUNTY, NEVADA

Locator: **WKGUS LLC**
 2215 N. 5th St.
 Elko, Nevada 89801

Drawn By: ARD November 2018 Sheet 1 of 2

T23N

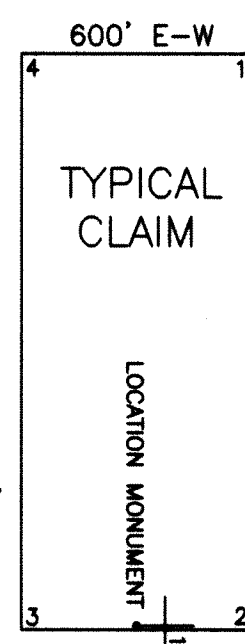
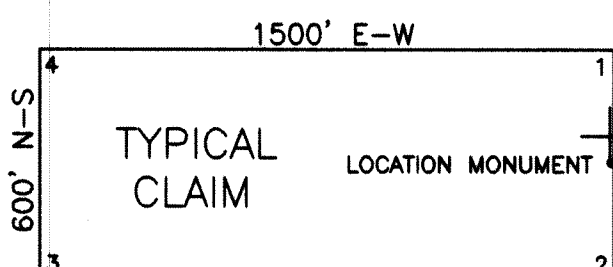
R50E



CLAIM LOCATION DATES:
 October 24, 2018: NGB 72-121, 124-125, 128-130
 October 25, 2018: NGB 55-71, 122-123, 126-127
 October 26, 2018: NGB 51-54

CLAIM TIES:
 The SW corner of NGB 104 is located approximately 530 feet north and 18,759 feet east of the NW corner of Section 30, T23N, R50E, M.D.M.

EUREKA COUNTY, NV 2018-237028
 Rec \$1210.00
 Total \$1,210.00 12/06/2018 03:25 PM
 MCEWEN MINING NEVADA INC Pgs:2
 00003810201802370280020028
 LISA HOEHNE, RECORDER



ALL CLAIMS ARE 1500' x 600' UNLESS OTHERWISE NOTED.
 ALL MONUMENTS ARE 2" x 2" x 4" WOODEN POSTS.
 LOCATION MONUMENTS ARE SET 10' INSIDE CLAIM BOUNDARY UNLESS OTHERWISE NOTED.

LODE MINING CLAIM MAP
NGB 51-130
 T23N, R50E, M.D.M.
 EUREKA COUNTY, NEVADA

Locator: **WKGUS LLC**
 2215 N. 5th St.
 Elko, Nevada 89801