

14 The SW Corner of MH 53 bears N67°16'E and is 6926' from the NW corner of Section 23 T26N R52E.

The NW Corner of MH 159 bears S70°48'E and is 4328' from the NW corner of Section 23 T26N R52E.

23

26

MH 53 MH 54
MH 55 MH 56

13

Sheet 2 of 3
Sheet 1 of 3

T26N R52E
T26N R53E

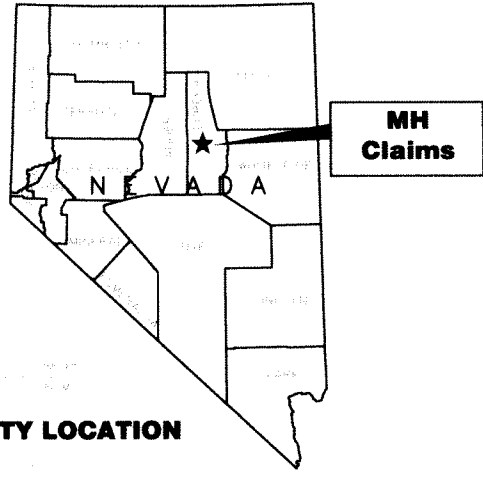
18

19

30

			MH 78		MH 117	MH 118
			MH 79	MH 80	MH 119	MH 120
	MH 157		MH 81	MH 82	MH 121	MH 122
	MH 158		MH 83	MH 84	MH 123	MH 124
MH 159	MH 160		MH 85	MH 86	MH 125	MH 126
MH 161	MH 162		MH 87	MH 88	MH 127	MH 128
MH 163	MH 164		MH 89	MH 90	MH 129	MH 130
MH 165	MH 166		MH 91	MH 92	MH 131	MH 132
MH 167	MH 168		MH 93	MH 94	MH 133	MH 134
MH 169	MH 170		MH 95	MH 96	MH 135	MH 136
MH 171	MH 172		MH 97	MH 98	MH 137	MH 138
MH 173	MH 174		MH 99	MH 100	MH 139	MH 140
MH 175	MH 176		MH 101	MH 102	MH 141	MH 142
MH 177	MH 178		MH 103	MH 104	MH 143	MH 144
MH 179	MH 180		MH 105	MH 106	MH 145	MH 146
MH 181	MH 182		MH 107	MH 108	MH 147	MH 148
MH 183	MH 184		MH 109	MH 110	MH 149	MH 150
MH 185	MH 186		MH 111	MH 112	MH 151	MH 152
MH 187	MH 188		MH 113	MH 114	MH 153	MH 154
MH 189	MH 190		MH 115	MH 116	MH 155	MH 156
			MH 191	MH 192	MH 193	

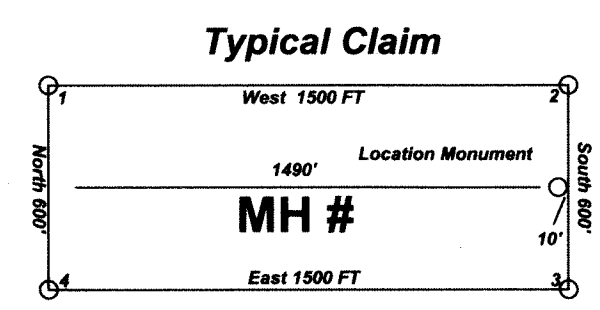
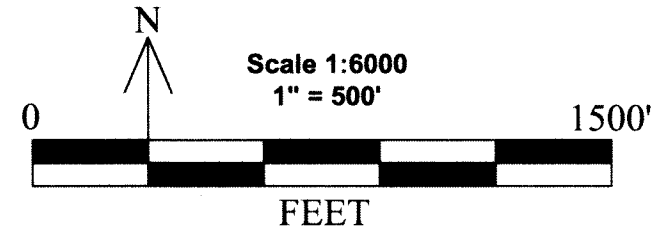
Lode Claims: MH 1-70, 76, 77 were located on 10-14-18 and MH 71-75, 198-207 were located on 10-15-18 and MH 79-116, 139-156, 159-190 were located on 10-16-18 and MH 78, 117-138, 157, 158, 191-197 were located on 10-17-18 and MH 208 was located on 10-18-18 in T26N, R52E Sections: 1, 12, 13, 23-26, 35-36 and T26N, R53E Sections: 6, 7, 18, 19, 30-31 and T27N, R52E Section: 36 and T27N, R53E Section: 31 in Eureka County, Nevada, MDB&M.



Sheet 3 of 3
Sheet 2 of 3
Sheet 1 of 3

Location Map for MH 1-208 Lode Mining Claims Sheet 1 of 3

Notes: Location Monuments are set 10' from claim end lines unless noted otherwise. All location and corner monuments are 2" X 2" X 4' wooden posts with scribed metal tags. All claims are 600' by 1500' unless noted otherwise.



LOCATION MAP for MH 1-208 Lode Mining Claims	
Agnico Eagle USA Limited 230 South Rock Blvd, Suite 31 Reno, NV, USA 89502	
MH_1-208_Claims_N83Z11F.dwg November 19, 2018	
Drawn By: G.I.S. Land Services	
Located By: T&T Exploration L.L.C.	
Datum: 1983, Projection: UTM, Zone: 11, Units: Feet	

EUREKA COUNTY, NV 2018-237261
Rec: S313000
Total \$3,130.00 12/21/2018 05:03 PM
AGNICO EAGLE USA LTD Pgs: 3



Locator:
Agnico Eagle USA Limited
230 South Rock Blvd, Suite 31
Reno, NV, USA 89502

T26N R52E

2

11

T26N R52E

The SW Corner of MH 53 bears N67°16'E and is 6926' from the NW corner of Section 23 T26N R52E.

Sheet 2 of 3
Sheet 1 of 3

Sheet 3 of 3
Sheet 2 of 3

MH 11	MH 12	MH 62
MH 13	MH 14	MH 63
MH 15	MH 16	MH 64
MH 17	MH 18	MH 65
MH 19	MH 20	MH 66
MH 21	MH 22	MH 67
MH 23	MH 24	MH 68
MH 25	MH 26	MH 69
MH 27	MH 28	MH 70

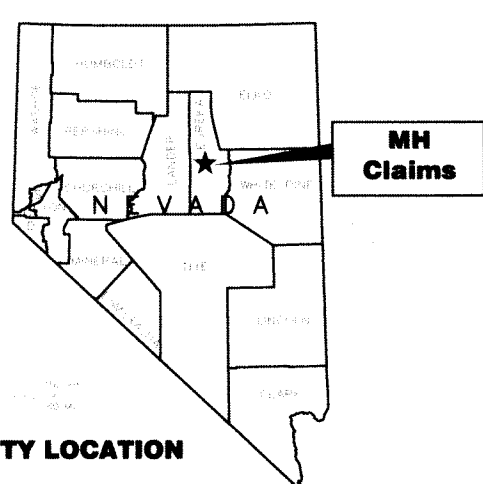
MH 29	MH 30	MH 205
MH 31	MH 32	MH 204
MH 33	MH 34	MH 203
MH 35	MH 36	MH 202
MH 37	MH 38	MH 201
MH 39	MH 40	MH 200
MH 41	MH 42	MH 199
MH 43	MH 44	MH 198
MH 45	MH 46	MH 197
MH 47	MH 48	MH 196
MH 49	MH 50	MH 195
MH 51	MH 52	MH 194
MH 53	MH 54	MH 193
MH 55	MH 56	MH 192

Note:
Datum: 1983
Projection: UTM
Units: US Survey Feet
All Bearings are reported in UTM Grid North.
All Degrees and Minutes are reported to the nearest minute.
All Distances are reported in feet to the nearest foot.

The depicted Township, Range and Sections are a product of the Bureau of Land Management, Cadastral Survey. Commonly known as the PLSS, CadNSDI that originates from the BLM GCDB program.

Location Map for MH 1-208 Lode Mining Claims Sheet 2 of 3

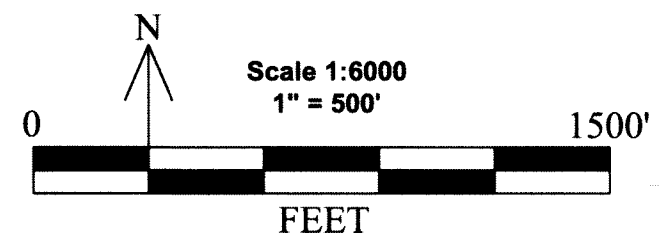
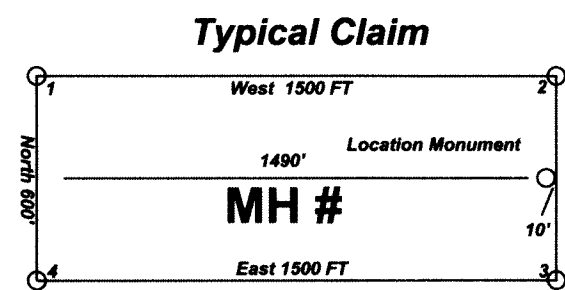
Lode Claims: MH 1-70, 76, 77 were located on 10-14-18 and MH 71-75, 198-207 were located on 10-15-18 and MH 79-116, 139-156, 159-190 were located on 10-16-18 and MH 78, 117-138, 157, 158, 191-197 were located on 10-17-18 and MH 208 was located on 10-18-18 in T26N, R52E Sections: 1, 12, 13, 23-26, 35-36 and T26N, R53E Sections: 6, 7, 18, 19, 30-31 and T27N, R52E Section: 36 and T27N, R53E Section: 31 in Eureka County, Nevada, MDB&M.



Locator:
Agnico Eagle USA Limited
230 South Rock Blvd, Suite 31
Reno, NV, USA 89502

Sheet 3 of 3
Sheet 2 of 3
Sheet 1 of 3

Notes:
Location Monuments are set 10' from claim end lines unless noted otherwise. All location and corner monuments are 2" X 2" X 4' wooden posts with scribed metal tags. All claims are 600' by 1500' unless noted otherwise.



LOCATION MAP for MH 1-208 Lode Mining Claims
Agnico Eagle USA Limited
230 South Rock Blvd, Suite 31
Reno, NV, USA 89502
MH_1-208_Claims_N83Z11F.dwg
December 4, 2018
Drawn By: G.I.S. Land Services
Located By: T&T Exploration L.L.C.
Datum: 1983, Projection: UTM,
Zone: 11, Units: Feet

EUREKA COUNTY, NV 2018-237261
S3, 120.00 \$10.00
Total \$3,130.00 12/21/2018 05:03 PM
AGNICO EAGLE USA LTD Pgs=3



T27N R52E
T26N R52E

T27N R52E
T27N R53E

T27N R53E
T26N R53E

MH 36	MH 2	MH 57	MH 199
MH 3	MH 4	MH 58	MH 198
MH 5	MH 6	MH 59	MH 198
MH 7	MH 8	MH 60	MH 198
MH 9	MH 10	MH 61	MH 198
MH 11	MH 12	MH 62	MH 201
MH 13	MH 14	MH 63	MH 201
MH 15	MH 16	MH 64	MH 200
MH 17	MH 18	MH 65	MH 200
MH 19 1	MH 20	MH 66	MH 203
MH 21	MH 22	MH 67	MH 203
MH 23	MH 24	MH 68	MH 202
MH 25	MH 26	MH 69	MH 202
MH 27	MH 28	MH 70	MH 202
MH 29	MH 30	MH 205	MH 205
MH 31	MH 32	MH 204	MH 204
MH 33	MH 34	MH 204	MH 204
MH 35	MH 36	MH 204	MH 204
MH 37 12	MH 38	MH 204	MH 204
MH 39	MH 40	MH 71	MH 71
MH 41	MH 42	MH 72	MH 72

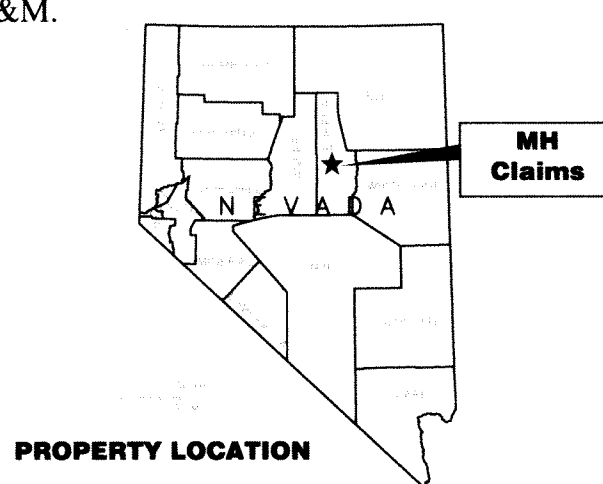
Sheet 3 of 3
Sheet 2 of 3

Note:
Datum: 1983
Projection: UTM
Units: US Survey Feet
All Bearings are reported in UTM Grid North.
All Degrees and Minutes are reported to the nearest minute.
All Distances are reported in feet to the nearest foot.

The depicted Township, Range and Sections are a product of the Bureau of Land Management, Cadastral Survey. Commonly known as the PLSS, CadNSDI that originates from the BLM GCDB program.

Lode Claims: MH 1-70, 76, 77 were located on 10-14-18 and MH 71-75, 198-207 were located on 10-15-18 and MH 79-116, 139-156, 159-190 were located on 10-16-18 and MH 78, 117-138, 157, 158, 191-197 were located on 10-17-18 and MH 208 was located on 10-18-18 in T26N, R52E Sections: 1, 12, 13, 23-26, 35-36 and T26N, R53E Sections: 6, 7, 18, 19, 30-31 and T27N, R52E Section: 36 and T27N, R53E Section: 31 in Eureka County, Nevada, MDB&M.

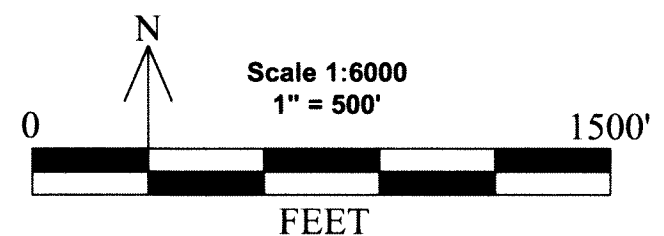
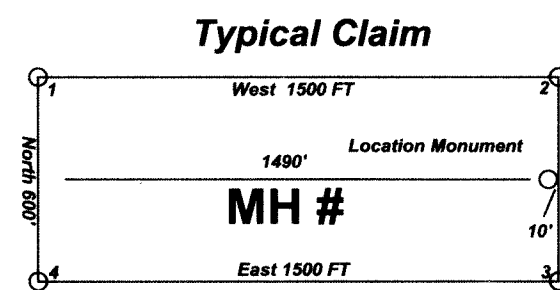
Locator:
Agnico Eagle USA Limited
230 South Rock Blvd, Suite 31
Reno, NV, USA 89502



Sheet 3 of 3
Sheet 2 of 3
Sheet 1 of 3

Location Map for MH 1-208 Lode Mining Claims Sheet 3 of 3

Notes:
Location Monuments are set 10' from claim end lines unless noted otherwise. All location and corner monuments are 2" X 2" X 4' wooden posts with scribed metal tags. All claims are 600' by 1500' unless noted otherwise.



LOCATION MAP for MH 1-208
Lode Mining Claims
Agnico Eagle USA Limited
230 South Rock Blvd, Suite 31
Reno, NV, USA 89502
MH_1-208_Claims_N83Z11FLdwg
December 4, 2018
Drawn By: G.I.S. Land Services
Located By: T&T Exploration L.L.C.
Datum: 1983, Projection: UTM,
Zone: 11, Units: Feet

EUREKA COUNTY, NV 2018-237261
\$3,120.00 \$10.00 12/21/2018 05:03 PM
Total \$3,130.00
AGNICO EAGLE USA LTD Pgs: 3



LISA HOEHNE, RECORDER