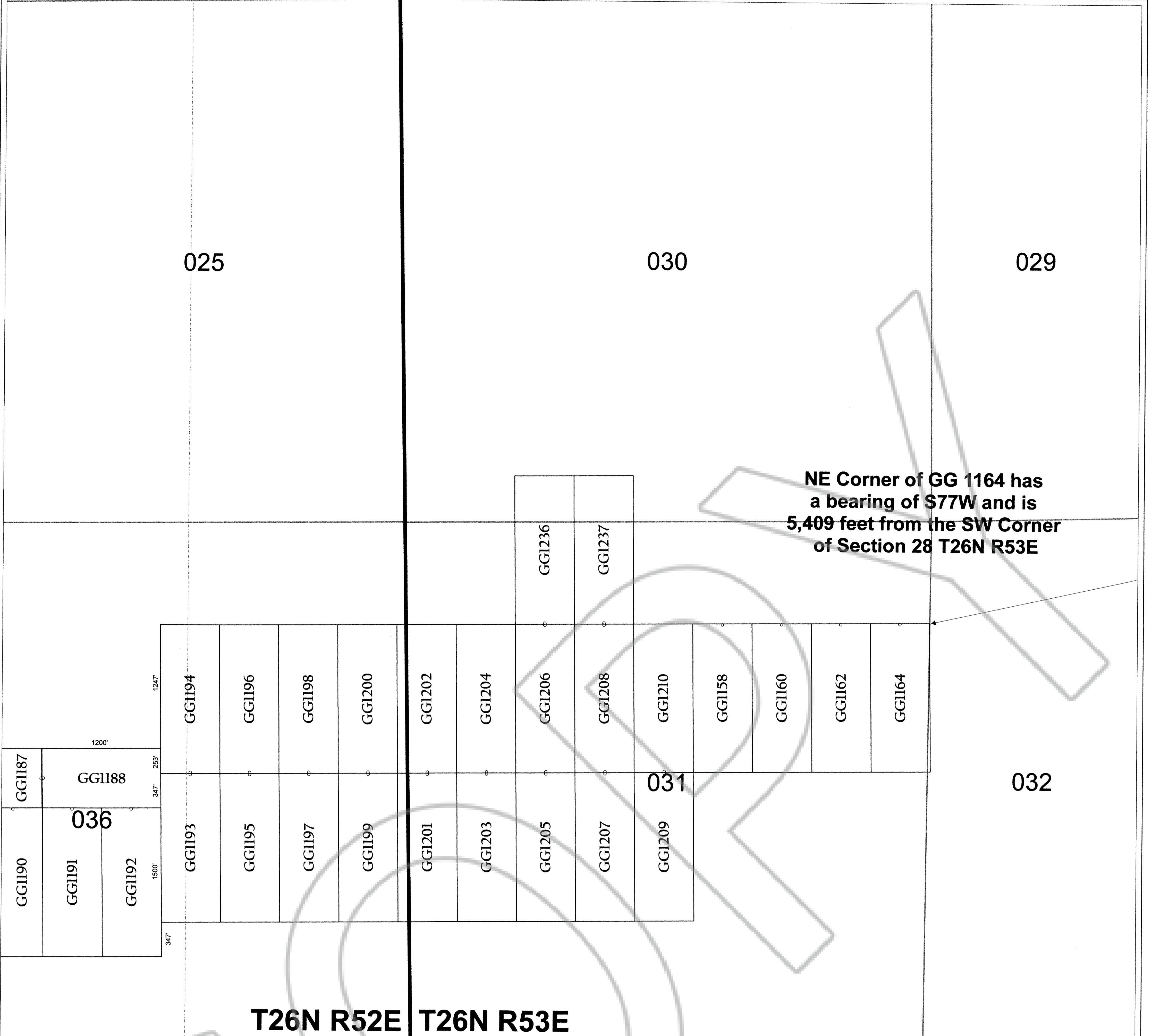


025

030

029

NE Corner of GG 1164 has a bearing of S77W and is 5,409 feet from the SW Corner of Section 28 T26N R53E



T26N R52E T26N R53E

T25N R52E T25N R53E

Sheet 1
Sheet 8

001

006

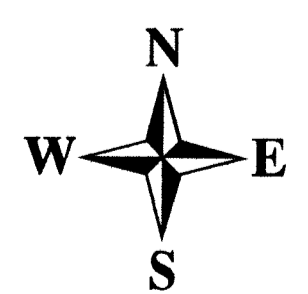
005

EUREKA COUNTY, NV 2018-237623
\$5,070.00 \$10.00
Total \$5,080.00 12/28/2018 04:45 PM
AGNICO EAGLE (USA) LTD Fgs=8



LISA HOEHNE, RECORDER

Location Map for
GG 1188, GG 1191-1210, GG 1236-1237,
GG 1158, GG 1160, GG 1162, GG 1164
Sheet 8 of 8



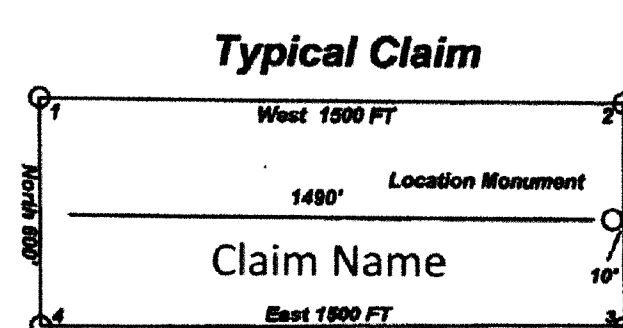
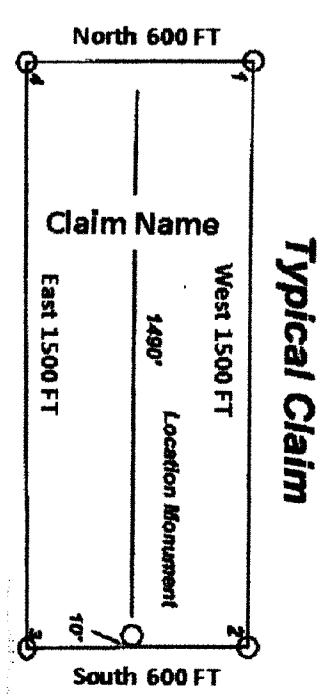
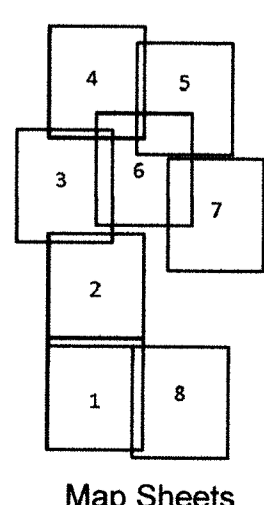
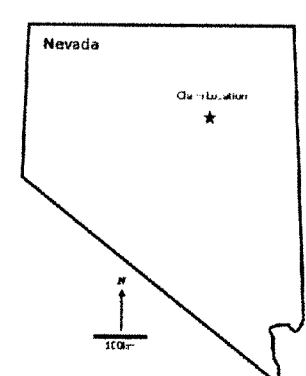
Scale 1:6000
1 inch = 500 feet

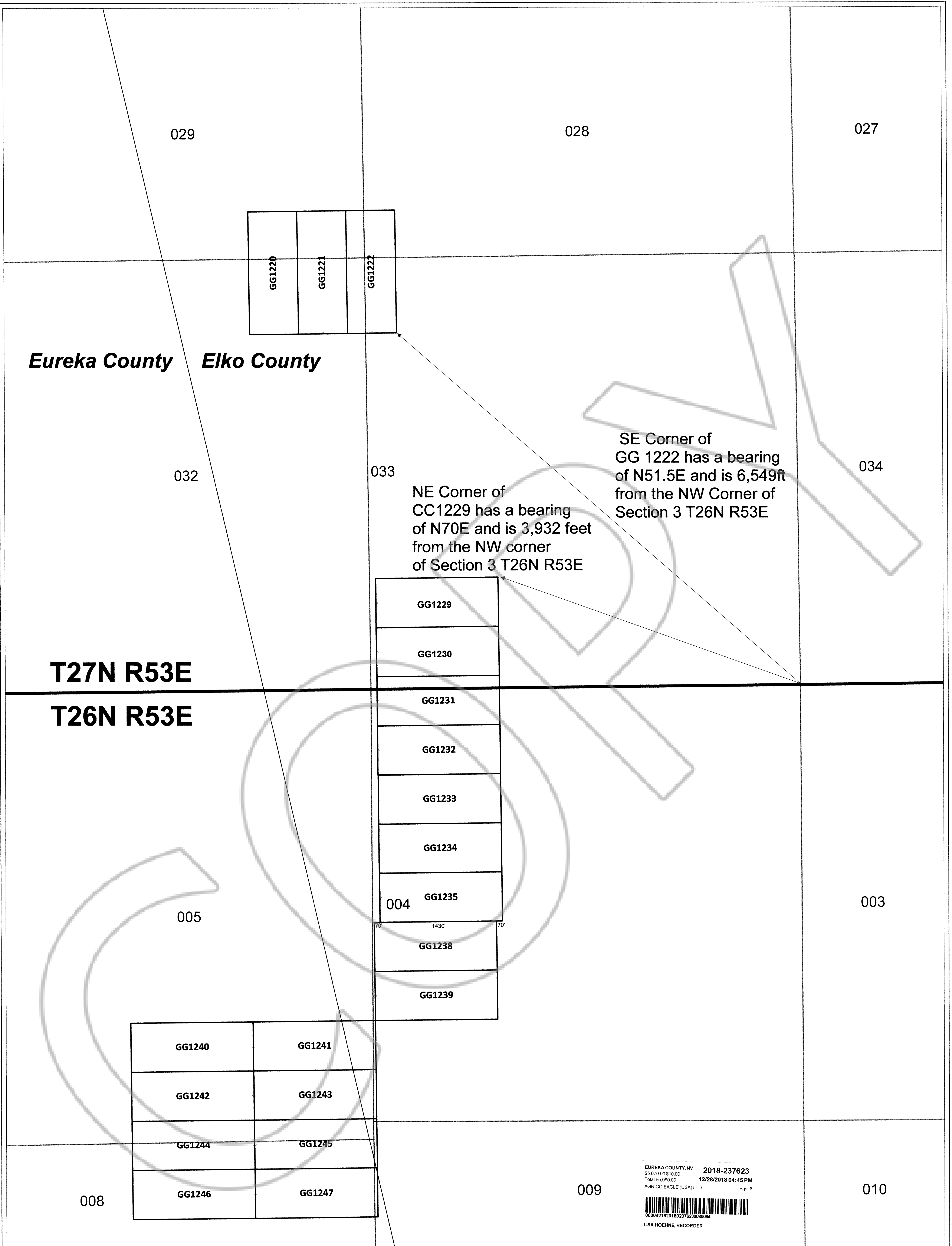


Notes:
Location Monuments are set 10 feet from claim end lines unless noted otherwise. All location and corner monuments are 2 inch by 2 inch by 4 feet wooden postes with scribed metal tags. All claims are 600 feet by 1500 feet unless noted otherwise.

Lode Claims: AEM 1-8, AEM 38-45, AEM 50-53, AEM 60-63, AEM 88-91, CDC 1-16, CDC 24-54, GG 23-29, GG 31, GG 33, GG 52-53, GG 57, GG 59, GG 61, GG 63, GG 65, GG 72, GG 73-74, GG 86-89, GG 440, GG 442, GG 444, GG 456-473, GG 536-549, GG 551, GG 553, GG 555, GG 557, GG 560, GG 563, GG 581-582, GG 693-696, GG 715-718, GG 862, GG 864, GG 868, GG 870, GG 872, GG 874, GG 876, GG 878, GG 880, GG 882, GG 884, GG 886, GG 888, GG 890, GG 892, GG 894, GG 896-915, GG 931-936, GG 939-944, GG 955-971, GG 973, GG 975-977, GG 999-1008, GG 1014-1021, GG 1158, GG 1160, GG 1162, GG 1164, GG 1183-1185, GG 1187-1210, GG 1236-1247, GDL 1-11, GDL 13, GDL 15, GDL 17, GDL 19, GDL 21-23, GDL 26-33, WRC 2, WRC 8, WRC 12-18, WRC 21-26, WRC 35-42, WRC 128 were located on 9-22-18 in T25N, R53 E Sections: 2, 3 T26N, R52E Sections: 2, 3, 10, 11, 14, 15, 22, 23, 26, 27, 34, 35, 36 T26N, R53E Sections: 4, 30, 31, 32 T27N, R52E Sections: 10, 11, 12, 13, 14, 15, 23, 24, 35, 27, 28, 33, 34, 36 T27N, R53E Sections: 17, 18, 19, 20, 30, 31 in Eureka County, NV and GG 1030-1033, GG 1220-1222, GG 1229-1235 were located on 9-22-18 in T27, R53 E Sections: 17, 20, 28, 29, 33 T26N, R53E Section 4 in Elko County, NV

Locator:
Agnico Eagle USA Limited
230 South Rock Blvd, Suite 31
Reno, NV, USA 89502





Eureka County Elko County

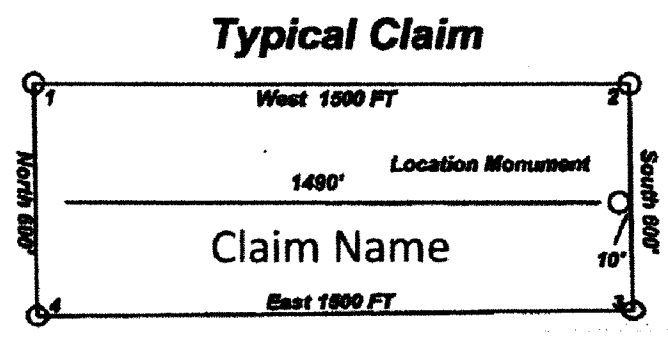
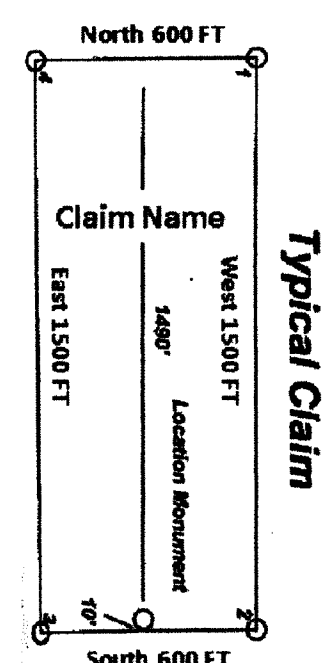
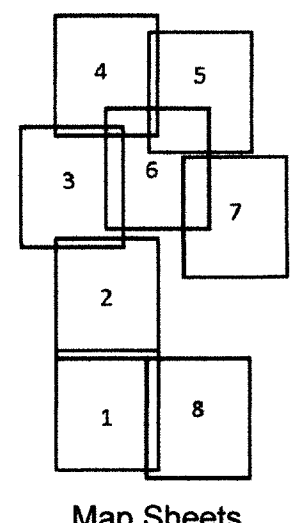
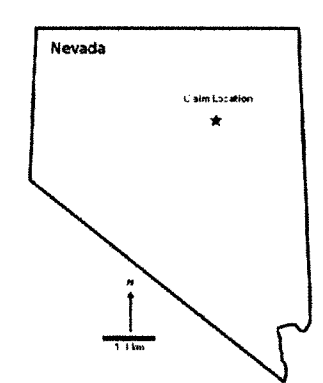
**T27N R53E
T26N R53E**

NE Corner of
CC1229 has a bearing
of N70E and is 3,932 feet
from the NW corner
of Section 3 T26N R53E

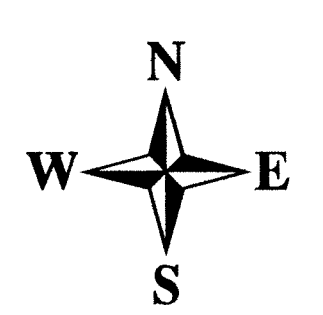
SE Corner of
GG 1222 has a bearing
of N51.5E and is 6,549ft
from the NW Corner of
Section 3 T26N R53E

EUREKA COUNTY, NV 2018-237623
\$5,070.00 \$10.00
Total \$5,080.00 12/28/2018 04:45 PM
AGNICO EAGLE (USA) LTD Pgs=8
00004216201802376230080084
LISA HOEHNE, RECORDER

Lode Claims: AEM 1-8, AEM 28-45, AEM 50-53, AEM 60-63, AEM 88-91, CDC 1-16, CDC 24-54, GG 23-29, GG 31, GG 33, GG 52-53, GG 57, GG 59, GG 61, GG 63, GG 65, GG 72, GG 73-74, GG 86-99, GG 440, GG 442, GG 444, GG 456-473, GG 536-549, GG 551, GG 553, GG 555, GG 557, GG 560, GG 563, GG 581-582, GG 693-696, GG 715-718, GG 862, GG 864, GG 868, GG 870, GG 872, GG 874, GG 876, GG 878, GG 880, GG 882, GG 884, GG 886, GG 888, GG 890, GG 892, GG 894, GG 896-916, GG 931-936, GG 939-944, GG 956-971, GG 973, GG 975-977, GG 999-1008, GG 1014-1021, GG 1158, GG 1160, GG 1162, GG 1164, GG 1183-1185, GG 1187-1210, GG 1236-1247, GDL 1-11, GDL 13, GDL 15, GDL 17, GDL 19, GDL 21-23, GDL 26-33, WRC 2, WRC 8, WRC 12-18, WRC 21-26, WRC 35-42, WRC 128 were located on 9-22-18 in T26N, R53 E Sections: 2, 3 T26N, R53E Sections: 2, 3, 10, 11, 14, 15, 22, 23, 26, 27, 34, 35, 36 T26N, R53E Sections: 4, 30, 31, 32 T27N, R52E Sections: 10, 11, 12, 13, 14, 15, 23, 24, 35, 27, 28, 33, 34, 36 T27N, R53E Sections: 17, 18, 19, 20, 30, 31 in Eureka County, NV and GG 1030-1033, GG 1220-1222, GG 1229-1235 were located on 9-22-18 in T27, R53 E Sections: 17, 20, 28, 29, 33 T26N, R53E Section 4 in Elko County, NV



**Location Map for
GG 1220-1222, GG 1229-1235
GG 1238-1247
Lode Mining Claims
Sheet 7 of 8**



**Scale 1:6000
1 inch = 500 feet**

Notes:
Location Monuments are set 10 feet from claim end lines unless noted otherwise. All location and corner monuments are 2ft. X 2ft. X4ft. wooden postes with scribed metal tags. All claims are 600ft.X1500ft unless noted otherwise.

**Locator:
Agnico Eagle USA Limited
230 South Rock Blvd, Suite 31
Reno, NV, USA 89502**

013

Sheet 4

Sheet 5

SW Corner of GG65 has a bearing of N85E and is 2,837 feet from the NE Corner Section 24 T27N R52E

024

T27N R52E

T27N R53E

019

020

GG462	GG463	GG468	GG1019
GG57	GG464	GG469	GG1018
GG59	GG465	GG470	GG1017
GG61	GG72	GG471	GG1016
GG63	GG73	GG472	GG1015
GG65	GG74	GG473	GG1014

NE Corner of GG87 has a bearing of N85E and is 5,757 feet from the SE Corner Section 29 T27N R53E

025

GG581	GG536	GG87
GG582	GG537	GG88
GG538	GG539	GG89
GG540	GG541	GG90
GG542	GG543	GG91
GG544	GG545	GG92
GG546	GG547	GG93
GG548	GG549	GG94
	GG551	GG95
	GG553	GG96
	GG555	GG97
	GG557	GG98
	GG560	GG99
	GG563	GG86

Sheet 5

029

030

031

036

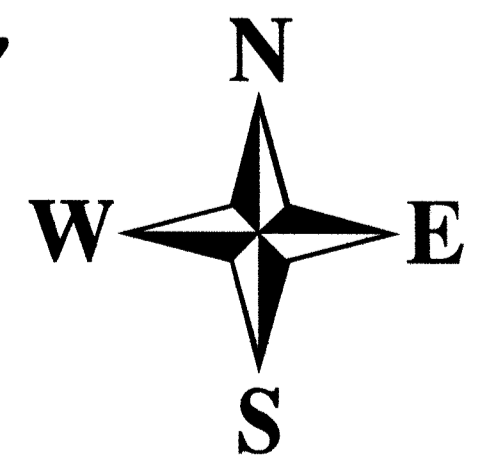
EUREKA COUNTY, NV 2018-237623
\$5,070.00 \$10.00
Total \$5,080.00 12/28/2018 04:45 PM
AGNICO EAGLE (USA) LTD Pgs:6



LISA HOEHNE, RECORDER

Code Claims: AEM 1-8, AEM 38-45, AEM 50-53, AEM 60-63, AEM 88-91, CDC 1-16, CDC 24-54, GG 23-29, GG 31, GG 33, GG 52-53, GG 57, GG 59, GG 61, GG 63, GG 65, GG 72, GG 73-74, GG 86-99, GG 440, GG 442, GG 444, GG 456-473, GG 536-549, GG 551, GG 553, GG 555, GG 557, GG 560, GG 563, GG 581-582, GG 693-696, GG 715-718, GG 862, GG 864, GG 868, GG 870, GG 872, GG 874, GG 876, GG 878, GG 880, GG 882, GG 884, GG 886, GG 888, GG 890, GG 892, GG 894, GG 896-916, GG 931-936, GG 938-944, GG 955-971, GG 973, GG 975-977, GG 989-1008, GG 1014-1021, GG 1158, GG 1160, GG 1162, GG 1164, GG 1183-1185, GG 1187-1210, GG 1236-1247, GDL 1-11, GDL 13, GDL 15, GDL 17, GDL 19, GDL 21-23, GDL 26-33, WRC 2, WRC 8, WRC 12-18, WRC 21-26, WRC 35-42, WRC 128
were located on 9-22-18 in
T26N, R53 E Sections: 2, 3
T26N, R52E Sections: 2, 3, 10, 11, 14, 15, 22, 23, 26, 27, 34, 35, 36
T26N, R53E Sections: 4, 30, 31, 32
T27N, R52E Sections: 10, 11, 12, 13, 14, 15, 23, 24, 35, 27, 28, 33, 34, 36
T27N, R53E Sections: 17, 18, 19, 20, 30, 31 in Eureka County, NV
and GG 1030-1033, GG 1220-1222, GG 1229-1235
were located on 9-22-18 in
T27, R53 E Sections: 17, 20, 28, 29, 33
T26N, R53E Section 4 in Elko County, NV

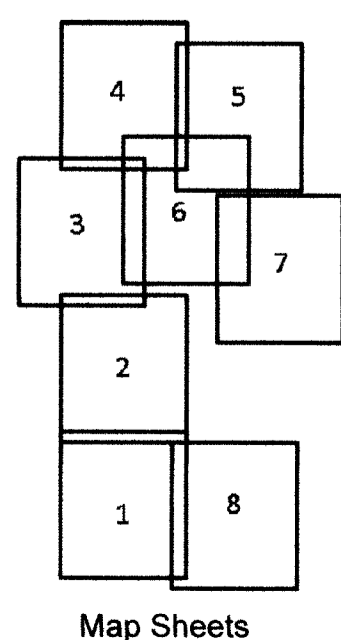
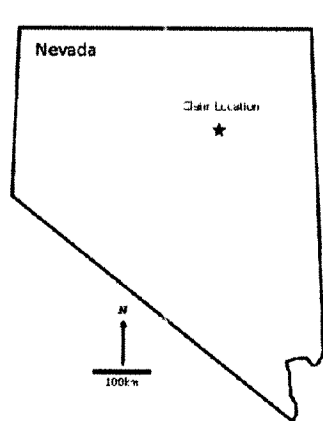
Location Map for
GG 57, GG 59, GG 61, GG 63, GG 65, GG 72-74,
GG 86-99, GG 464 -465, GG 469-473, GG 536-549,
GG 551, GG 553, GG 555, GG 557, GG 560,
GG 563, GG 581-582
Sheet 6 of 8



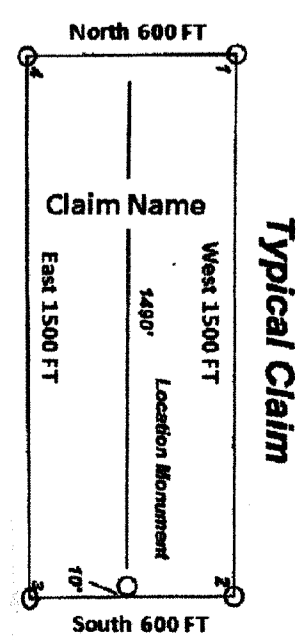
Scale 1:6000
1 inch = 500 feet



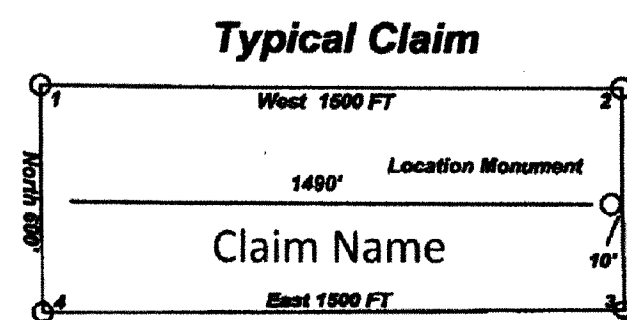
Notes:
Location Monuments are set 10 feet from claim end lines unless noted otherwise. All location and corner monuments are 2 inch by 2 inch by 4 feet wooden postes with scribed metal tags. All claims are 600 feet by 1500 feet unless noted otherwise.



Map Sheets



Typical Claim



Typical Claim

Locator:
Agnico Eagle USA Limited
230 South Rock Blvd, Suite 31
Reno, NV, USA 89502

Eureka County Elko County

GG940
012 GG942
GG944
GG440
GG442
GG444
GG27
GG29
013
GG31
GG33

T27N R52E
T27N R53E

007

008

018

017

SE Corner of GG 1032 has a bearing of N62W and is 3,635 feet from the NW corner of Section 21 T27N, R53 E

GG52	GG456	GG457			
GG53	GG458	GG459	GG466	GG1021	
	GG460	GG461	GG467	GG1020	GG1030 GG1032
	GG462	GG463	GG468	GG1019	
	GG57	GG464	GG469	GG1018	GG1031 GG1033
	GG59	GG465	GG470	GG1017	
	GG61	GG72	GG471	GG1016	
	GG63	GG73	GG472	GG1015	
019	GG65	GG74	GG473	GG1014	020

Sheet 4
Sheet 5

Sheet 6

024

GG536	GG87
GG537	GG88
GG539	GG89
GG541	GG90

025

030

029

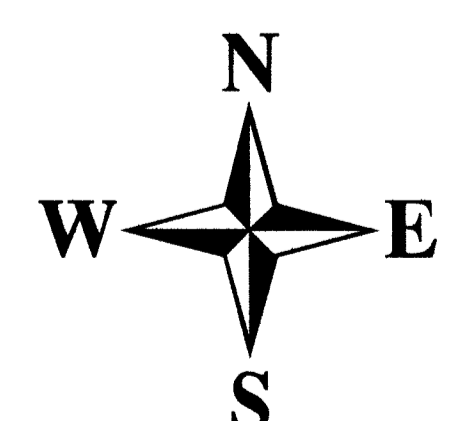
EUREKA COUNTY, NV 2018-237623
 \$5,070.00 \$10.00
 Total \$5,080.00 12/28/2018 04:45 PM
 AGNICO EAGLE (USA) LTD Pgs=8
 00004216201802376230080084
 LISA HOEHNE, RECORDER

Sheet 6

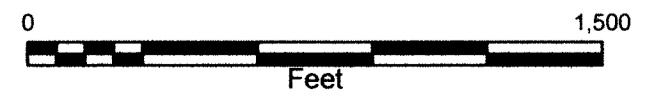
Lode Claims: AEM 1-8, AEM 38-45, AEM 50-53, AEM 60-63, AEM 88-91, CDC 1-16, CDC 24-54, GG 23-29, GG 31, GG 33, GG 52-53, GG 57, GG 59, GG 61, GG 63, GG 65, GG 72, GG 73-74, GG 86-89, GG 440, GG 442, GG 444, GG 456-473, GG 536-549, GG 551, GG 553, GG 555, GG 557, GG 560, GG 563, GG 581-582, GG 693-696, GG 715-718, GG 862, GG 864, GG 868, GG 870, GG 872, GG 874, GG 876, GG 878, GG 880, GG 882, GG 884, GG 886, GG 888, GG 890, GG 892, GG 894, GG 896-916, GG 931-936, GG 939-944, GG 955-971, GG 973, GG 975-977, GG 999-1008, GG 1014-1021, GG 1158, GG 1160, GG 1162, GG 1164, GG 1183-1185, GG 1187-1210, GG 1236-1247, GDL 1-11, GDL 13, GDL 15, GDL 17, GDL 19, GDL 21-23, GDL 26-33, WRC 2, WRC 8, WRC 12-18, WRC 21-26, WRC 35-42, WRC 128 were located on 9-22-18 in T25N, R53 E Sections: 2, 3 T26N, R52E Sections: 2, 3, 10, 11, 14, 15, 22, 23, 26, 27, 34, 35, 36 T26N, R53E Sections: 4, 30, 31, 32 T27N, R52E Sections: 10, 11, 12, 13, 14, 15, 23, 24, 35, 27, 28, 33, 34, 36 T27N, R53E Sections: 17, 18, 19, 20, 30, 31 in Eureka County, NV and GG 1030-1033, GG 1220-1222, GG 1228-1235 were located on 9-22-18 in T27, R53 E Sections: 17, 20, 28, 29, 33 T26N, R53E Section 4 in Elko County, NV

Location Map for
 GG 27, GG 29, GG 31, GG33, GG 440, GG 442, GG 444,
 GG 940, GG 942, GG 944, GG 57, GG 59, GG 61, GG 63,
 GG 65, GG 72-74, GG 456-473, GG 1014-1021

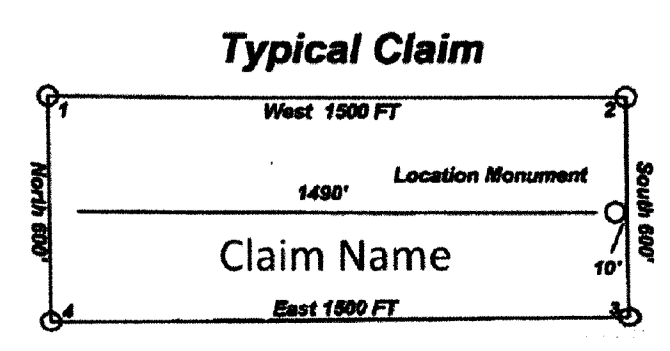
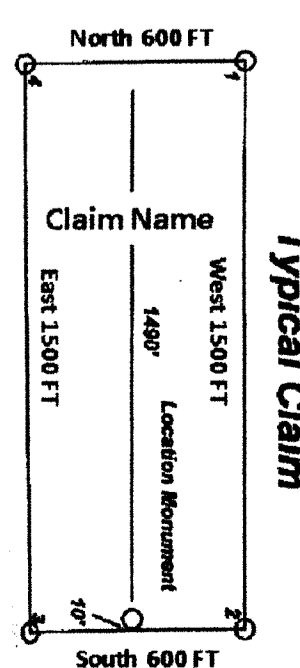
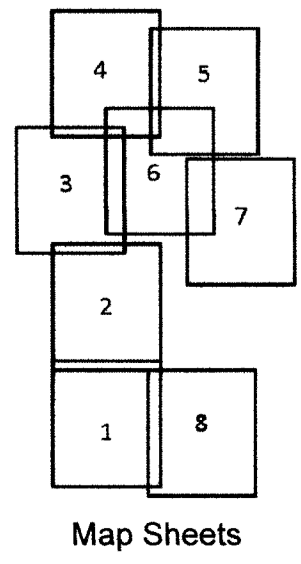
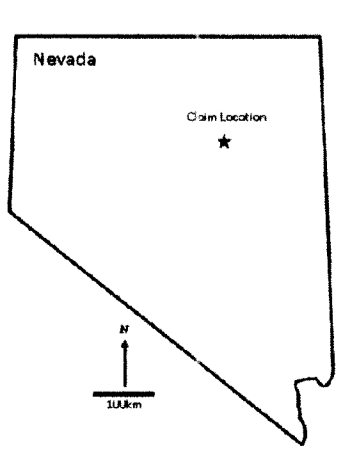
Lode Mining Claims
 Sheet 5 of 8



Scale 1:6000
 1 inch = 500 feet



Notes:
 Location Monuments are set 10 feet from claim end lines unless noted otherwise. All location and corner monuments are 2 inch by 2 inch by 4 feet wooden postes with scribed metal tags. All claims are 600 feet by 1500 feet unless noted otherwise.



Locator:
 Agnico Eagle USA Limited
 230 South Rock Blvd, Suite 3
 Reno, NV, USA 89502

T27N R52E

010

011

012

014

013

SW Corner of GG 28 has a bearing of N68.5E and is 7,065 feet from the NW corner of Section 23 T27N R52E

SW Corner of GG 975 has a bearing of S10W and is 126 feet from the NW corner of Section 23 T27N R52E

Sheet 4
Sheet 5

022

023

024

026

025

027	GG999	GG1000
	GG1001	GG1002

GG581	GG536
GG582	GG537
GG538	GG539
GG540	GG541

EUREKA COUNTY, NV 2018-237623
 \$5,070.00 \$10.00
 Total \$5,080.00 12/28/2018 04:45 PM
 AGNICO EAGLE (USA) LTD Pgs:8
 00004216201802376230000084
 LISA HOEHNE, RECORDER

Sheet 4

Lode Claims: AEM 1-3, AEM 38-45, AEM 50-53, AEM 60-63, AEM 88-91, CDC 1-16, CDC 24-24, GG 23-29, GG 31, GG 33, GG 52-53, GG 57, GG 59, GG 61, GG 63, GG 65, GG 72, GG 73-74, GG 85-99, GG 440, GG 442, GG 444, GG 456-473, GG 536-549, GG 551, GG 553, GG 555, GG 557, GG 560, GG 563, GG 581-582, GG 693-696, GG 715-718, GG 862, GG 864, GG 868, GG 870, GG 872, GG 874, GG 876, GG 878, GG 880, GG 882, GG 884, GG 886, GG 888, GG 890, GG 892, GG 894, GG 896-916, GG 931-936, GG 939-944, GG 955-971, GG 973, GG 975-977, GG 999-1008, GG 1014-1021, GG 1158, GG 1160, GG 1162, GG 1164, GG 1183-1185, GG 1187-1210, GG 1236-1247, GDL 1-11, GDL 13, GDL 15, GDL 17, GDL 19, GDL 21-23, GDL 26-33, WRC 2, WRC 8, WRC 12-18, WRC 21-26, WRC 35-42, WRC 128 were located on 9-22-18 in T26N, R53 E Sections: 2, 3 T26N, R52E Sections: 2, 3, 10, 11, 14, 15, 22, 23, 26, 27, 34, 35, 36 T26N, R53E Sections: 4, 30, 31, 32 T27N, R52E Sections: 10, 11, 12, 13, 14, 15, 23, 24, 35, 27, 28, 33, 34, 36 T27N, R53E Sections: 17, 18, 19, 20, 30, 31 in Eureka County, NV and GG 1030-1033, GG 1220-1222, GG 1229-1235 were located on 9-22-18 in T27, R53 E Sections: 17, 20, 28, 29, 33 T26N, R53E Section 4 in Elko County, NV

**Location Map for
 GG23-26, GG 28, GG 540, GG 931-936, GG 939,
 GG 941, GG 943, GG 955-968, GG 970-971, GG 973,
 GG 975-977, GG 979, GG 999-1002**

**Lode Mining Claims
 Sheet 4 of 8**

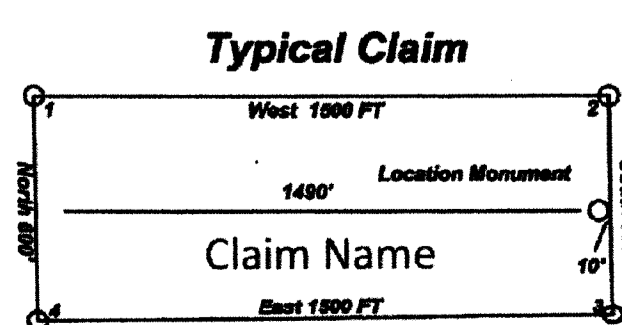
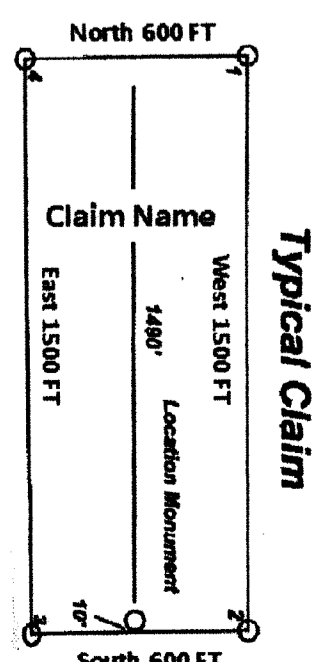
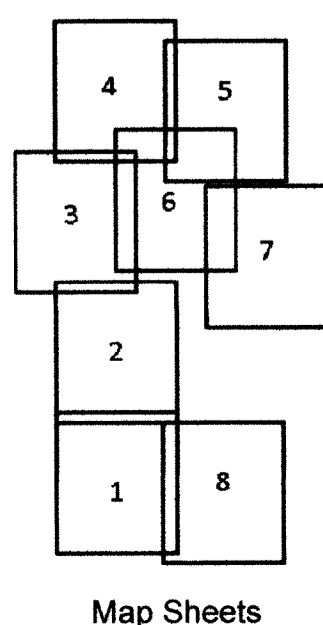
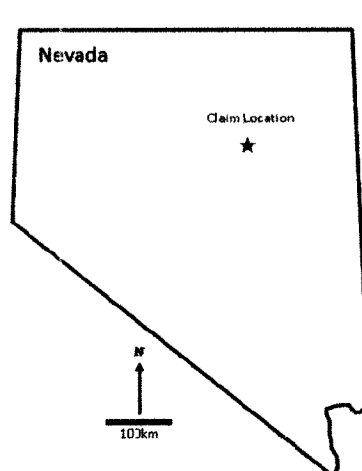


Scale 1:6000
 1 inch = 500 feet



Notes:
 Location Monuments are set 10 feet from claim end lines unless noted otherwise. All location and corner monuments are 2 inch by 2 inch by 4 feet wooden postes with scribed metal tags. All claims are 600 feet by 1500 feet unless noted otherwise.

Locator:
 Agnico Eagle USA Limited
 230 South Rock Blvd, Suite 31
 Reno, NV, USA 89502



NW Corner of GDL 1 has a bearing of S12W and is 3,158 feet from the NW Corner of Section 28 T27N R52E

028

027

026

GG1001

GG1002

GG1003

GG1004

GG1005

GG1006

GG1007

GG1008

GG716

GG715

GG718

GG717

GDL1

GDL2

GG694

GG693

GDL3

GDL4

GG696

GG695

GDL5

GDL6

GDL7

GDL8

GDL9

GDL10

033

GDL11

034

GDL13

GDL15

GDL17

GDL19

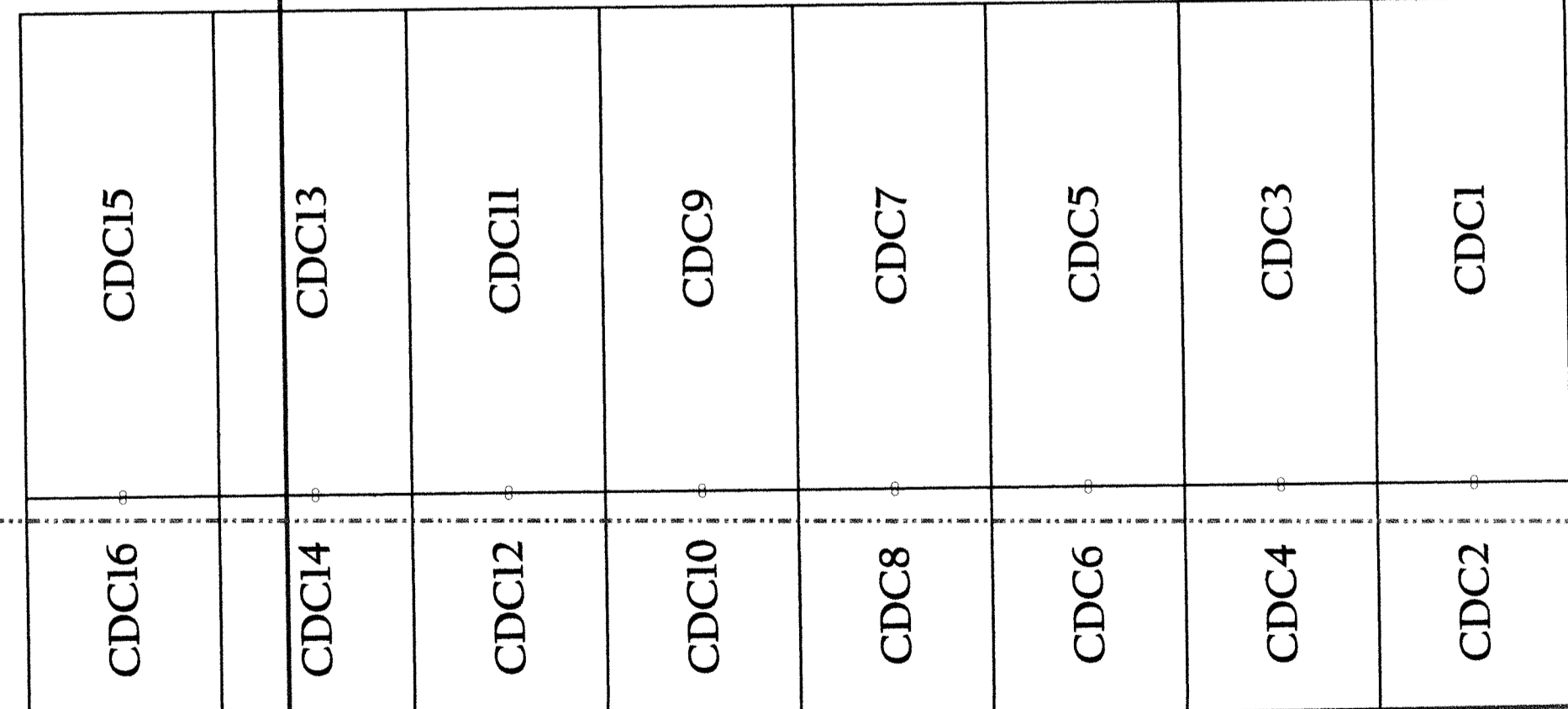
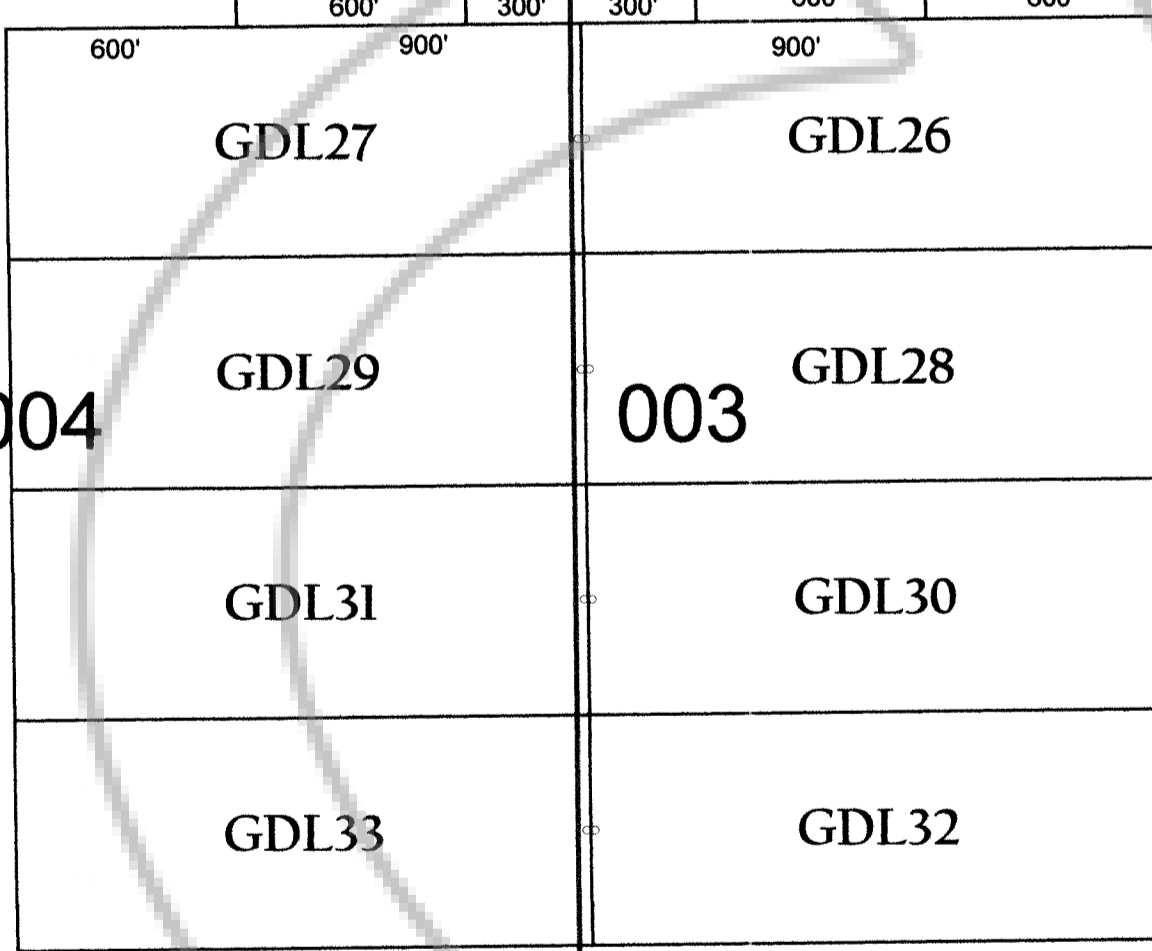
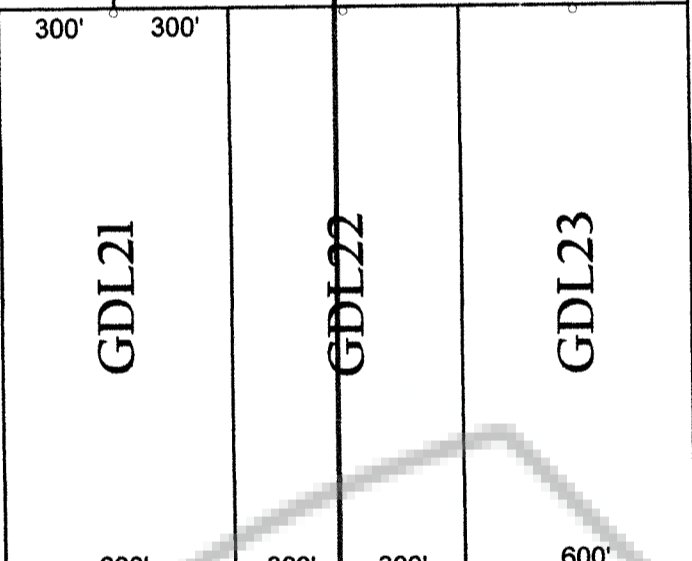
T27N R52E

T26N R52E

035

NE Corner of CDC1 has a bearing of S65E and is 2,007 feet from the NW Corner of Section 35 T27N R52E

002



Sheet 3
Sheet 2

EUREKA COUNTY, NV 2018-237623
\$5,070.00 \$10.00
Total \$5,080.00 12/28/2018 04:45 PM
AGNICO EAGLE (USA) LTD Pgs=8
00004216201802376230080084
LISA HOEHNE, RECORDER

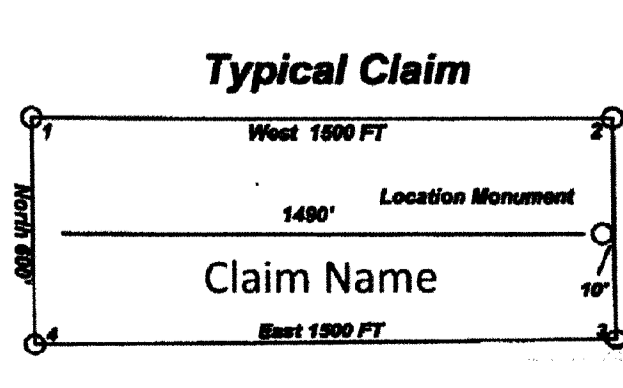
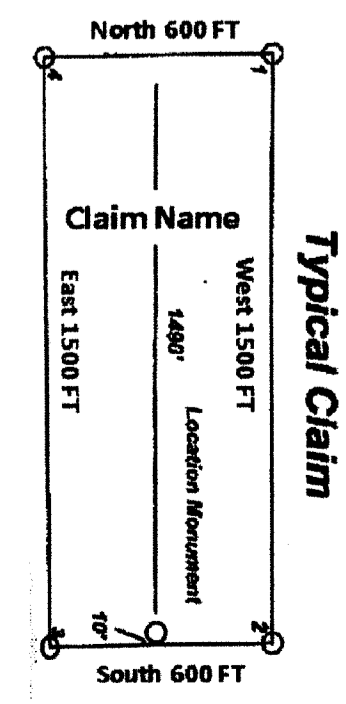
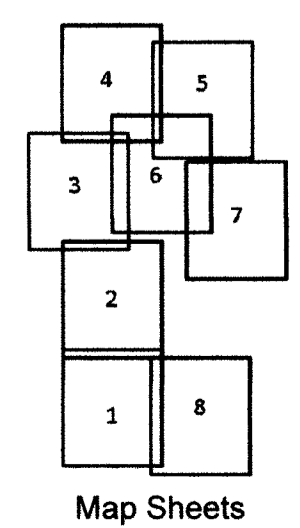
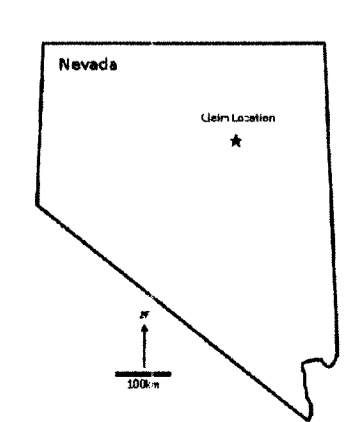
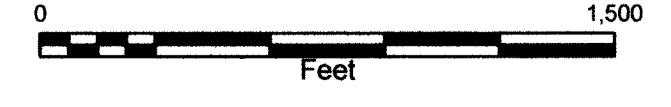
Lode Claims: AEM 1-8, AEM 38-45, AEM 50-53, AEM 60-63, AEM 88-91, CDC 1-16, CDC 24-54, GG 23-29, GG 31, GG 33, GG 52-53, GG 57, GG 59, GG 61, GG 63, GG 65, GG 72, GG 73-74, GG 86-99, GG 440, GG 442, GG 444, GG 456-473, GG 536-549, GG 551, GG 553, GG 555, GG 557, GG 560, GG 563, GG 581-582, GG 693-696, GG 715-718, GG 862, GG 864, GG 868, GG 870, GG 872, GG 874, GG 876, GG 878, GG 880, GG 882, GG 884, GG 886, GG 888, GG 890, GG 892, GG 894, GG 896-916, GG 931-936, GG 939-944, GG 955-971, GG 973, GG 975-977, GG 999-1008, GG 1014-1021, GG 1158, GG 1160, GG 1162, GG 1164, GG 1183-1185, GG 1187-1210, GG 1236-1247, GDL 1-11, GDL 13, GDL 15, GDL 17, GDL 19, GDL 21-23, GDL 26-33, WRC 2, WRC 8, WRC 12-18, WRC 21-26, WRC 35-42, WRC 128 were located on 9-22-18 in T25N, R53 E Sections: 2, 3, 10, 11, 14, 15, 22, 23, 26, 27, 34, 35, 36 T26N, R52E Sections: 2, 3, 10, 11, 14, 15, 22, 23, 26, 27, 34, 35, 36 T26N, R53E Sections: 4, 30, 31, 32 T27N, R52E Sections: 10, 11, 12, 13, 14, 15, 23, 24, 35, 27, 28, 33, 34, 36 T27N, R53E Sections: 17, 18, 19, 20, 30, 31 in Eureka County, NV and GG 1030-1033, GG 1220-1222, GG 1229-1235 were located on 9-22-18 in T27, R53 E Sections: 17, 20, 28, 29, 33 T26N, R53E Section 4 in Elko County, NV

Location Map for
GDL 1-11, GDL 13, GDL15, GDL 17, GDL 19, GDL 21-23,
GDL 26-33, GG 693-696, GG 715-718, GG 1003-1008
CDC 1, CDC 3, CDC 5, CDC 7, CDC 9, CDC 11, CDC 13, CDC 15

Lode Mining Claims
Sheet 3 of 8



Scale 1:6000
1 inch = 500 feet



Notes:
Location Monuments are set 10 feet from claim end lines unless noted otherwise. All location and corner monuments are 2 inch by 2 inch by 4 feet wooden postes with scribed metal tags. All claims are 600 feet by 1500 feet unless noted otherwise.

Locator:
Agnico Eagle USA Limited
230 South Rock Blvd, Suite 31
Reno, NV, USA 89502

003

CDC15	CDC13	CDC11	CDC9	CDC7	CDC5	CDC3	CDC1
					002		
CDC16	CDC14	CDC12	CDC10	CDC8	CDC6	CDC4	CDC2
CDC24	CDC26	CDC28	CDC30	CDC32	CDC34	CDC36	AEM2
CDC25	CDC27	CDC29	CDC31	CDC33	CDC35	CDC37	AEM1
CDC38	CDC40	CDC42	CDC44	CDC46	CDC48	CDC50	AEM4
CDC39	CDC41	CDC43	CDC45	CDC47	CDC49	CDC51	AEM3
				CDC54	CDC53	CDC52	AEM5
				AEM6	AEM7	AEM8	

001
Sheet 3
Sheet 2

T26N R52E

010

011

012

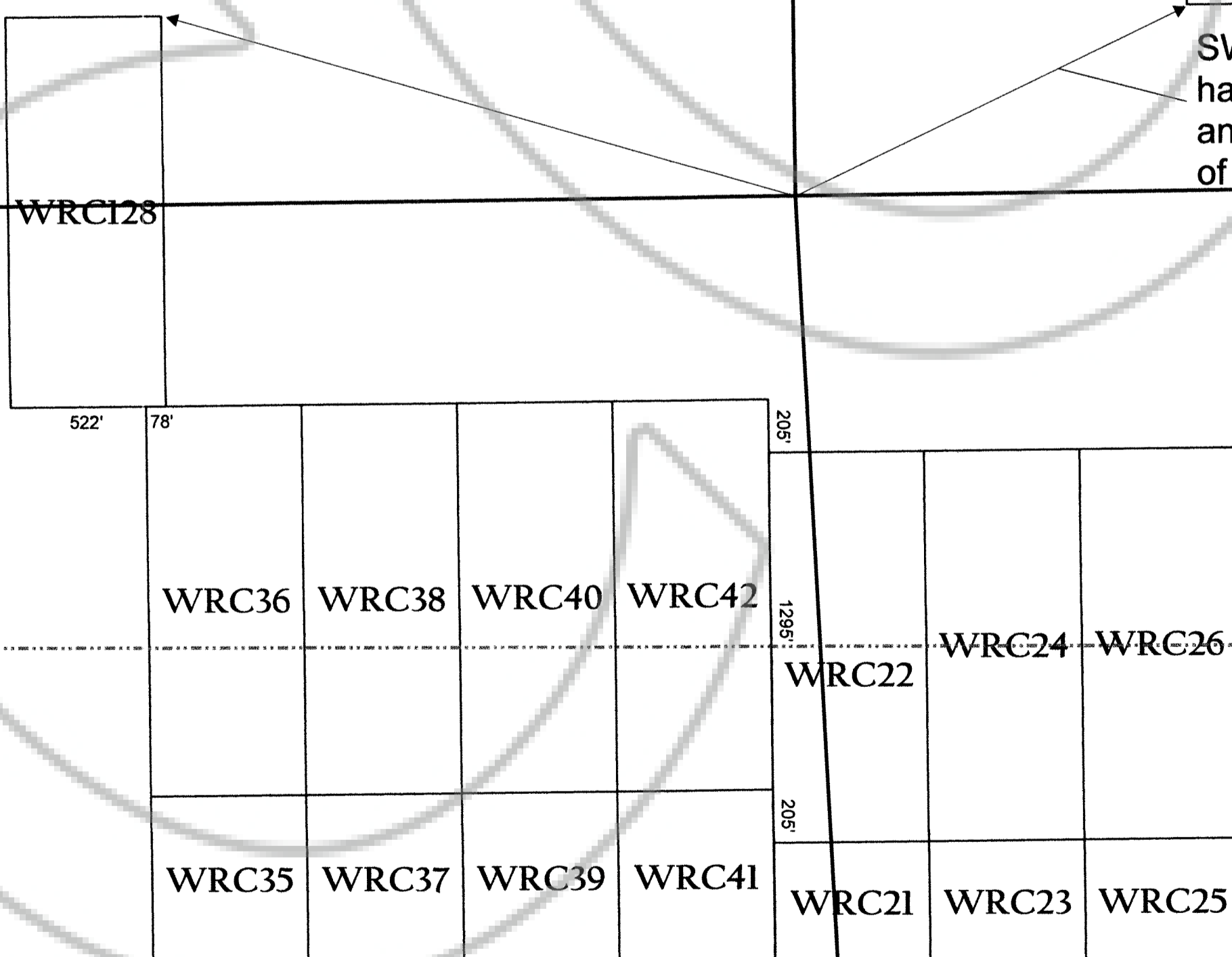
015

014

013

NW Corner of WRC128 has a bearing of N73W and is 2,536 feet from the NW Corner of Section 23 T26N R52E

SW Corner of AEM6 has a bearing of N62E and is 1,675 feet from the NW Corner of Section 23 T26N R52E



022

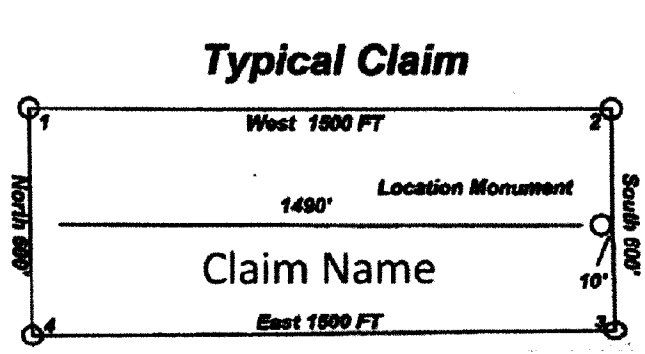
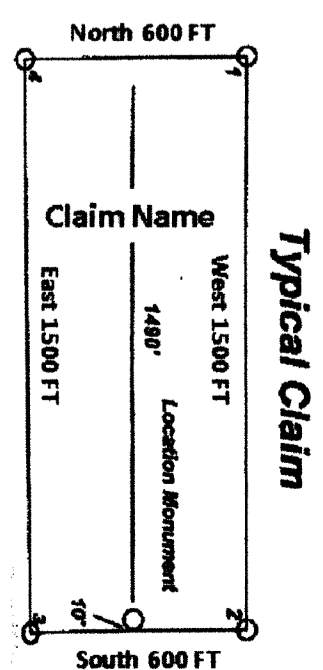
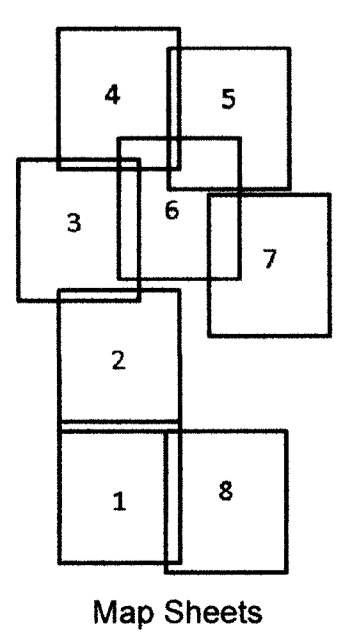
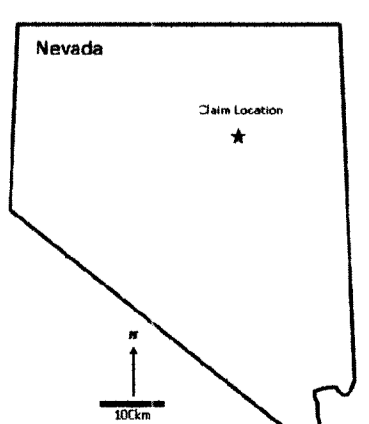
023 Sheet 2
Sheet 1

024

EUREKA COUNTY, NV 2018-237623
 \$5,070.00 \$10.00
 Total \$5,080.00 12/28/2018 04:45 PM
 AGNICO EAGLE (USA) LTD Page 8
 000042162018237623000004
 LISA HOEHNE, RECORDER

Lode Claims: AEM 1-8, AEM 38-45, AEM 50-53, AEM 60-63, AEM 89-91, CDC 1-16, CDC 24-54, GG 23-29, GG 31, GG 33, GG 52-53, GG 57, GG 59, GG 61, GG 63, GG 65, GG 72, GG 73-74, GG 86-89, GG 440, GG 444, GG 456-473, GG 536-549, GG 551, GG 553, GG 555, GG 557, GG 560, GG 563, GG 581-582, GG 693-696, GG 715-718, GG 862, GG 864, GG 868, GG 870, GG 872, GG 874, GG 876, GG 878, GG 880, GG 882, GG 884, GG 886, GG 888, GG 890, GG 892, GG 894, GG 896-918, GG 931-936, GG 939-944, GG 955-971, GG 973, GG 975-977, GG 999-1008, GG 1014-1021, GG 1158, GG 1160, GG 1162, GG 1164, GG 1183-1185, GG 1187-1210, GG 1236-1247, GDL 1-11, GDL 13, GDL 15, GDL 17, GDL 19, GDL 21-23, GDL 28-33, WRC 2, WRC 8, WRC 12-18, WRC 21-26, WRC 35-42, WRC 128 were located on 9-22-18 in T26N, R53 E Sections: 2, 3 T26N, R52E Sections: 2, 3, 10, 11, 14, 15, 22, 23, 26, 27, 34, 35, 36 T26N, R53E Sections: 4, 30, 31, 32 T27N, R52E Sections: 10, 11, 12, 13, 14, 15, 23, 24, 35, 27, 28, 33, 34, 36 T27N, R53E Sections: 17, 18, 19, 20, 30, 31 in Eureka County, NV and GG 1030-1033, GG 1220-1222, GG 1229-1235 were located on 9-22-18 in T27, R53 E Sections: 17, 20, 28, 29, 33 T26N, R53E Section 4 in Elko County, NV

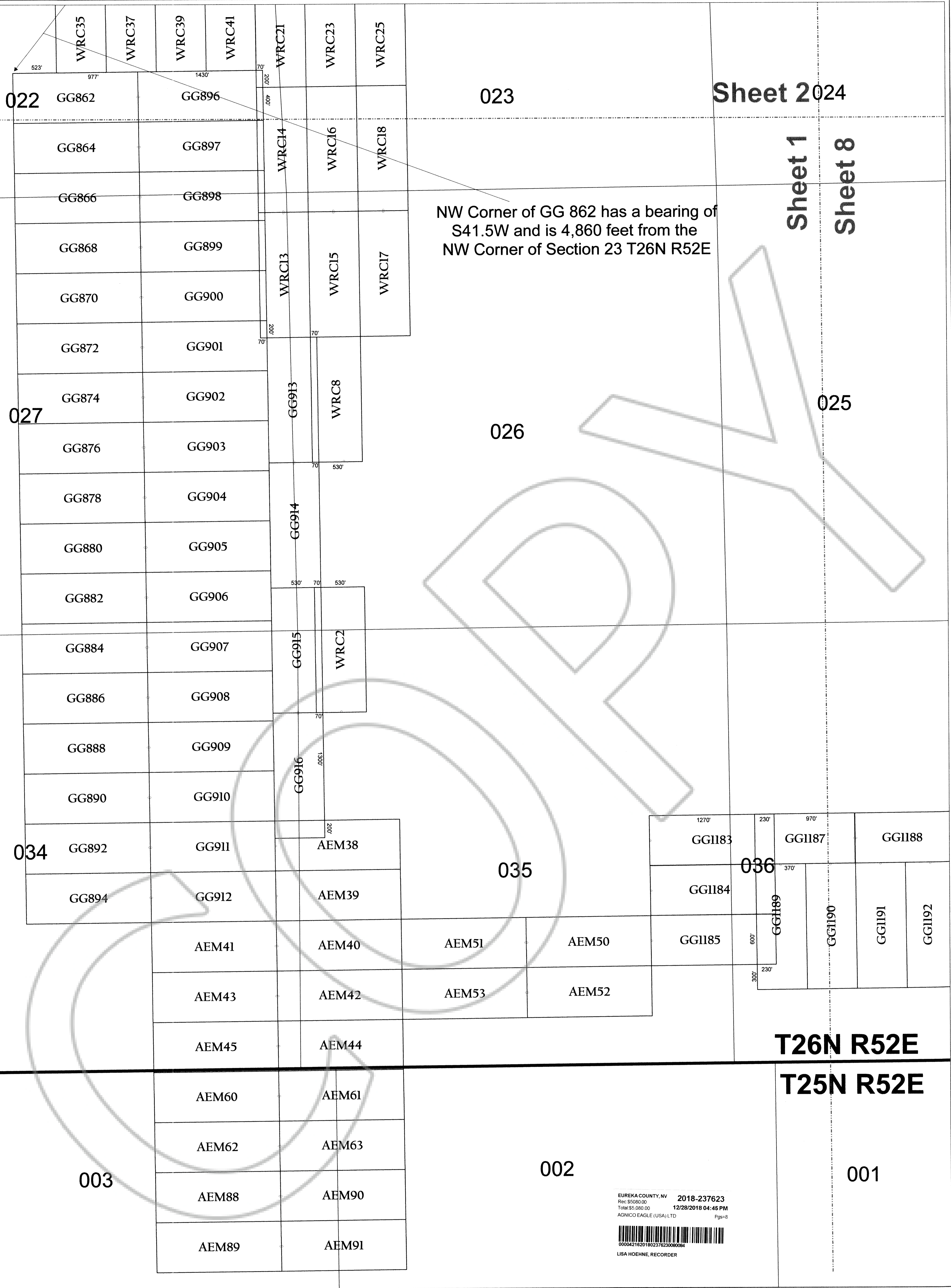
**Location Map for
 CDC 2, CDC 4, CDC 6, CDC 8, CDC 10, CDC 12, CDC 14, CDC 16,
 CDC 24-54, AEM 1-8, WRC 22, WRC 24, WRC 26, WRC 36, WRC 38,
 WRC 40, WRC 42, WRC 128
 Lode Mining Claims
 Sheet 2 of 8**



Scale 1:6000
 1 inch = 500 feet

**Locator:
 Agnico Eagle USA Limited
 230 South Rock Blvd, Suite 31
 Reno, NV, USA 89502**

Notes:
 Location Monuments are set 10 feet from claim end lines unless noted otherwise. All location and corner monuments are 2 inch by 2 inch by 4 feet wooden postes with scribed metal tags. All claims are 600 feet by 1500 feet unless noted otherwise.



Sheet 2024

Sheet 1
Sheet 8

NW Corner of GG 862 has a bearing of S41.5W and is 4,860 feet from the NW Corner of Section 23 T26N R52E

T26N R52E

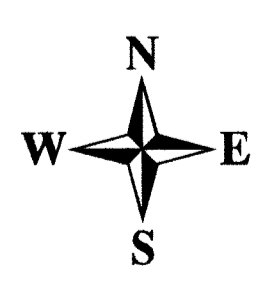
T25N R52E

EUREKA COUNTY, NV 2018-237623
 Rec 55080.00
 Total 55080.00 12/28/2018 04:45 PM
 AGNICO EAGLE (USA) LTD Page=8

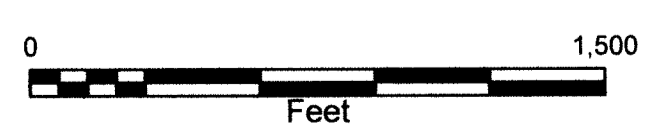


LISA HOEHNE, RECORDER

Location Map for
 WRC 2, WRC 8, WRC 13-18, AEM 38-45, AEM 50-53,
 AEM 60-63, AEM 88-91, GG 862, GG 864, GG 866,
 GG 868, GG 870, GG 872, GG 874, GG 876, GG 878,
 GG 880, GG 882, GG 884, GG 886, GG 888, GG 890,
 GG 892, GG 894, GG 896-916, GG 1183-1185, GG 1187,
 GG 1189-1191
 Lode Mining Claims
 Sheet 1 of 8



Scale 1:6000
 1 inch = 500 feet



Notes:
 Location Monuments are set 10 feet from claim end lines unless noted otherwise. All location and corner monuments are 2 inch by 2 inch by 4 feet wooden postes with scribed metal tags. All claims are 600 feet by 1500 feet unless noted otherwise.

Locator:
 Agnico Eagle USA Limited
 230 South Rock Blvd, Suite 31
 Reno, NV, USA 89502

