

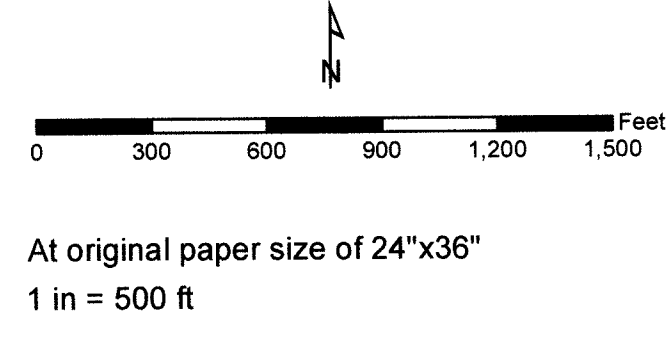
NEC SBA 19:  
579207E, 4372446N  
UTM Z11 83

EXISTING CLAIMS  
(SWS 1-4)

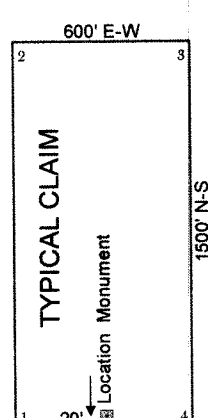
NW corner SBA 66 is  
9600 feet due east of  
NE corner of SBA 25 (SHEET 2)

Tie: From NE Corner SBA 82 to  
NW corner Section 31, T19N R53E is  
approximately 10168 feet east and  
575 feet south

T19N R52E  
T18N R52E



All claims are 1500' x 600' unless otherwise noted  
All location and corner monuments are  
2"x 2"x 4" wooden posts with  
scribed metal tags  
Location monuments are set 20 feet  
from claim endlines, unless otherwise noted



Key	
	Claim Post
	Lode Claim Boundary
	Survey Tie
	Township Line
	Section Line- BLM gcsb
	Protracted Quarter-Section Line

CLAIM TIES:  
From NE Corner SBA 82 to  
NW corner of Section 31, T19N R53E is  
approximately 10168 feet east and  
575 feet south  
NE corner of SBA 25 (Sheet 2) is  
9600 feet due west of  
NE Corner of SBA 66 (Sheet 1)

LOCATION DATES:  
October 23, 2018 SBA 22-39  
October 24, 2018 SBA 40-51, SBA 84-103  
October 25, 2018 SBA 52-83, SBA 104  
October 26, 2018 SBA 1-21

LOCATOR:  
James D Greybeck  
1720 Moon Lane  
Reno, Nevada 89521

EUREKA COUNTY, NV 2019-237846  
\$1,560.00 \$10.00  
Total \$1,570.00  
01/17/2019 08:29 AM  
JAMES D GREYBECK Pgs:2



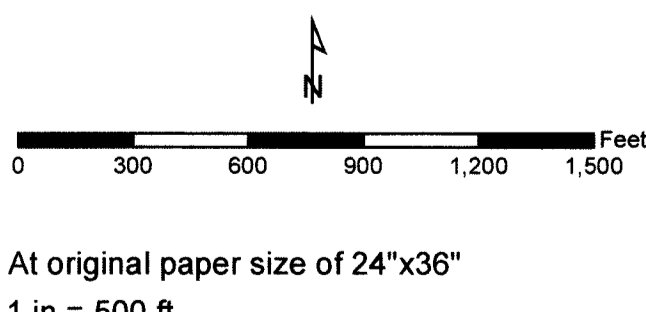
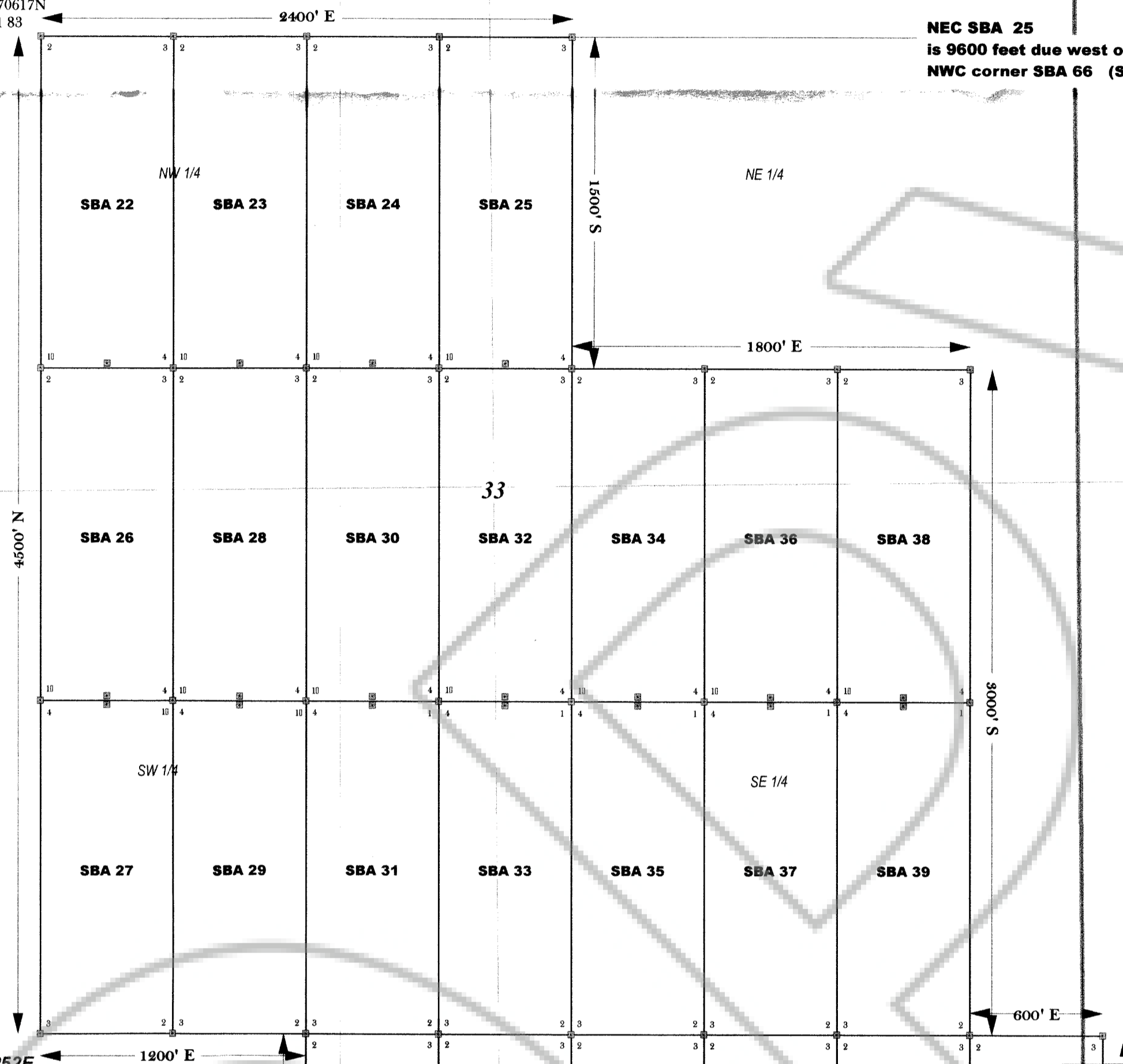
LISA HOEHNE, RECORDER

<b>SBA LODE CLAIMS</b>
<b>SHEET 1 OF 2</b>
<b>SBA 1-21, 52-104</b>
Mahogany Hills Eureka County, Nevada T19N R52E Sections 22, 23, 25-27, 33-36 T18N R52E Sections 1-4
Date: December 28, 2018

SW 1/4

NWC SBA 22:  
574818E, 4370617N  
UTM Z11 83

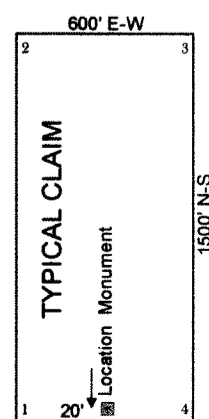
NEC SBA 25  
is 9600 feet due west of  
NWC corner SBA 66 (SHEET 1)



At original paper size of 24"x36"  
1 in = 500 ft

All claims are 1500' x 600' unless otherwise noted  
All location and corner monuments are  
2"x 2"x 4' wooden posts with  
scribed metal tags

Location monuments are set 20 feet  
from claim endlines, unless otherwise noted



**Key**

- Claim Post
- Lode Claim Boundary
- Survey Tie
- Township Line
- Section Line- BLM godb
- Protracted Quarter-Section Line

**CLAIM TIES:**  
From NE Corner SBA 82 to  
NW corner of Section 31, T19N R53E is  
approximately 10168 feet east and  
575 feet south  
NE corner of SBA 25 (Sheet 2) is  
9600 feet due west of  
NE Corner of SBA 66 (Sheet 1)

**LOCATION DATES:**  
October 23, 2018 SBA 22-39  
October 24, 2018 SBA 40-51, SBA 84-103  
October 25, 2018 SBA 52-83, SBA 104  
October 26, 2018 SBA 1-21

**LOCATOR:**  
James D Greybeck  
1720 Moon Lane  
Reno, Nevada 89521

EUREKA COUNTY, NV  
\$1,560.00 \$10.00  
Total \$1,570.00  
JAMES D GREYBECK  
2019-237846  
01/17/2019 08:29 AM  
Pg#2



LISA HOEHNE, RECORDER

**SBA LODE CLAIMS**  
**SHEET 2 OF 2**  
**SBA 22-51**  
*Mahogany Hills*  
Eureka County, Nevada  
T19N R52E Sections 22,23, 25-27, 33-36  
T18N R52E Sections 1-4  
Date: December 28, 2018