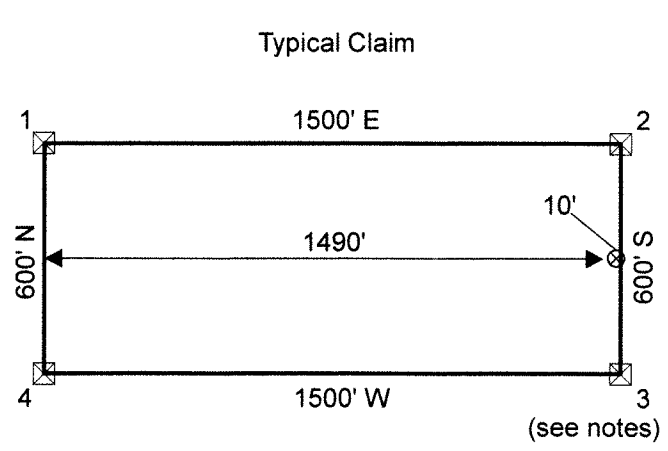


Tie Point Data:
The NE corner of FVAN 27 is located
1,116 ft south and 362 ft east of the found
NW corner of Section 4, T31N, R52E, M.D.M.

Eureka

Elko

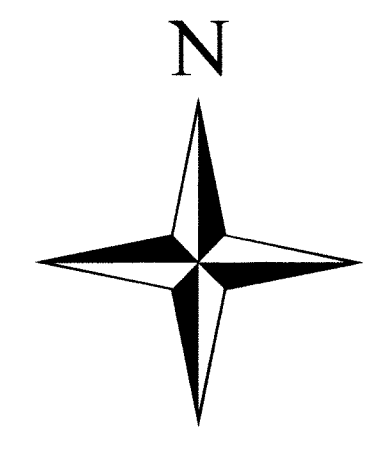
EUREKA COUNTY, NV 2019-237912
\$735.00 \$10.00
Total \$745.00 01/22/2019 04:10 PM
RANGEFONT GEOLOGICAL Pgs: 1



Location Dates:
November 5, 2018: E100 - 117, 124 - 135
November 6, 2018: E118 - 123
November 20, 2018: FVAN 8 - 39

Copper One USA, Inc.

Notes:
E and FVAN location monuments are set 10 feet from endline along centerline of claim.
All location monuments are 2"x4" wooden posts with scribed metal tags.
All claims are 600' x 1500'.



UTM NAD83
Sections from BLM GCDB
1:6,000 1 inch = 500 feet
0 500 1,000 1,500 Feet

E & FVAN Unpatented Lode Mining Claims

Township 32 North, Range 52 East, Sections 32 & 33
Township 31 North, Range 52 East, Sections 4 - 9, 16, & 17
Mt. Diablo Base Line and Meridian
Eureka & Elko Counties, Nevada

Locator:
Copper One USA, Inc.
1055 Dunsmuir Street, Suite 2200, Box 49237
Vancouver, BC V7X 1L2 Canada

Sheet 1 of 1

Drawn by: HAW Date: 21-Nov-2018