

24

Location Map for EB 1-85 Lode Claims

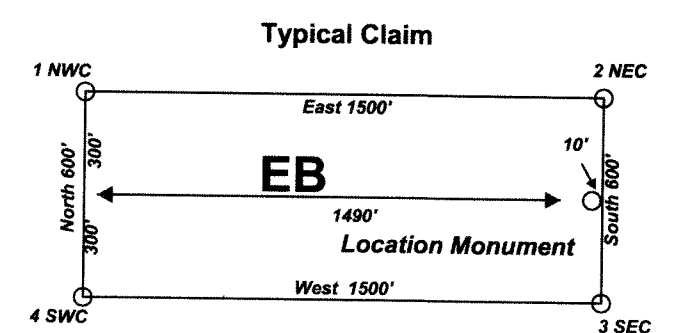
"EB" lode claims 1-85 were located on April 24, 2019 in T21N, R54E, Sections 23-27 & 34-36 in Eureka County, Nevada. M.D.B.&M.

Note:
Datum: 1983
Projection: UTM
Units: US Survey Feet
All Bearings are reported in UTM Grid North.
All Degrees and Minutes are reported to the nearest minute.
All Distances are reported in feet to the nearest foot.

The depicted Township, Range and Sections are a product of the Bureau of Land Management, Cadastral Survey. Commonly known as the PLSS, CadNSDI that originates from the BLM GCDB program.

The NE Corner of EB 6 bears N73°44'E and is 691' from the SW corner of Section 24 T21N R54E, MDB&M.

Locator:
Objective Exploration LLC
251 Holyoke Drive
Spring Creek, Nevada 89815



Notes:
Location Monuments are set 10' from claim end lines unless noted otherwise. All location and corner monuments are 2" X 2" X 4' wooden posts with scribed metal tags. All claims are 600' by 1500' unless noted otherwise.

**PROPERTY LOCATION**

Bearings reported in UTM GN
Grid North (GN), Datum, 1983

Scale 1:6000

1" = 500'

1000

FEET

Location Map for

EB 1-85 Lode Claim

Objective Five: 41

251 Holyoke Drive

Spring Creek, Nevada

1-85_Claims_N83Z

April 25, 2019

Work By: T&T Explora

1983 Projection: U

Units: Feet

COUNTY, NV 2019 3

05/03/2019

EXPLORATION LLC

[illegible]

902385610850859

E, CLERK RECORDER

25

26

27

36

35

34

T21N R54E