

Amended Map

This Map amends Eureka County Document 2018-236351, recorded on 11/02/2018, (Map for BLM Cols NMC 1180941 - 1180992), VV 1-197 lode claims.

This map amends and corrects: Map Note 4) to state the SW corner (Cor.3) of Claim VV 12 is "170" feet South of Road intersection... and; changes the drawing to show SW corner of VV 12 to be "Cor. 3".

No location monuments or claims corners were moved or relocated by this amendment. All other map notes and drawing details remain the same.

Locator: Nevada Alaska Mining Co., Inc., PO Box 2611, Fernley, Nevada, 89408. By, Robert Craig Agent, *[Signature]*, May 17, 2019

Map 1 of 1, VV Claim Group

Map of 52 each Lode Claims: VV 1-12, 21-26, 31-36, 61-76, 78-79, 86-89, 189-190, 192-193 and 196-197, located in S3, S4, S9, S10 of T23N, R51E, MDB&M, Unsurveyed, Unknown Mining District, Eureka County, Nevada. Claims were located in September and October, 2018.

Locator and Owner:
Nevada Alaska Mining Co. Inc. PO Box 2611, Fernley, NV 89408.

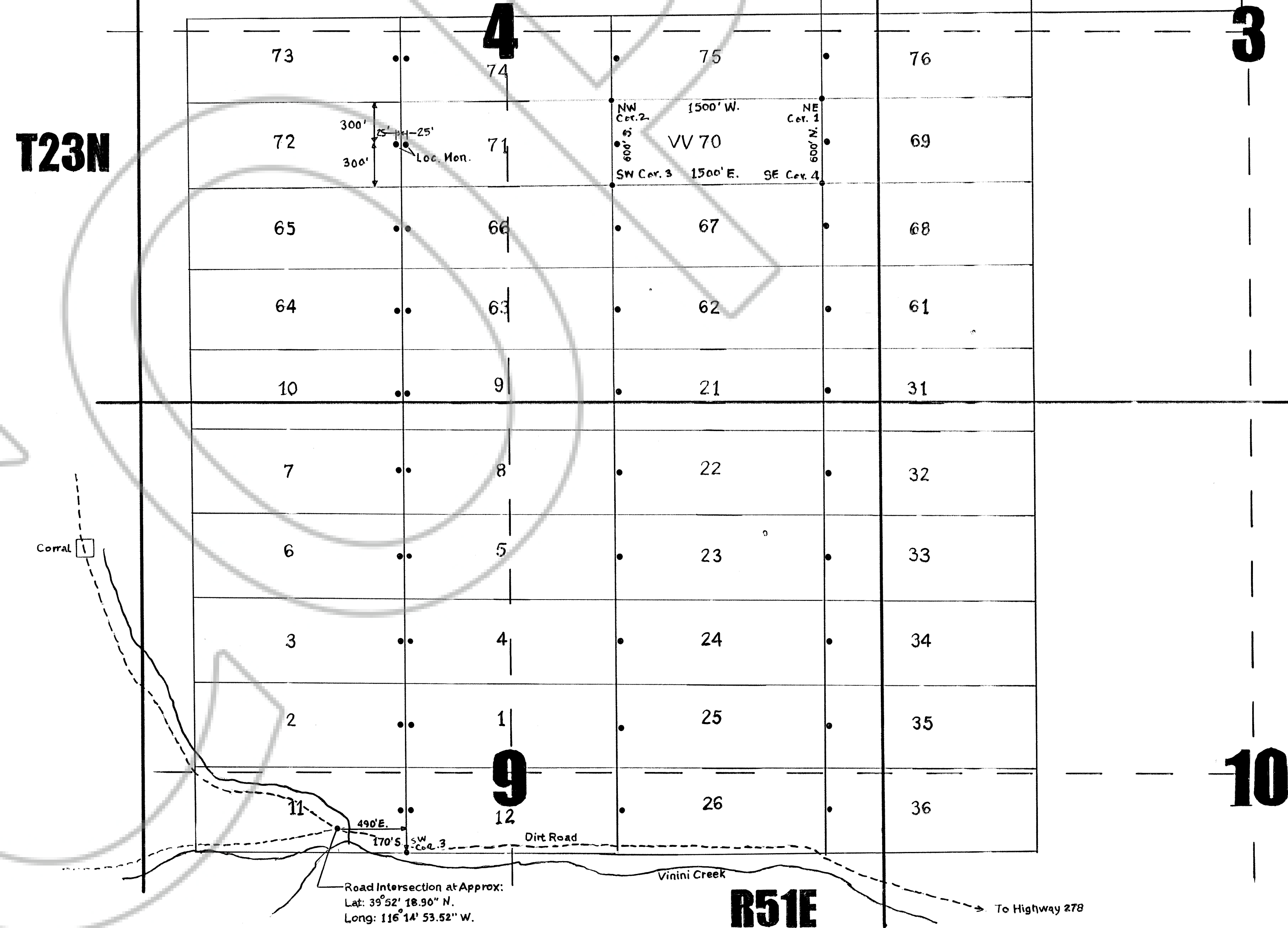
Map Notes:

- 1) All claims are typical of VV 70, except as shown. Location monuments are set 25 feet from claim end lines on centerline of claim.
- 2) Claim corner and location monuments are 4 foot long by 1-1/2" by 1-1/2" wood posts, set 1 foot into the ground. Claim corners have claim numbers and North arrow on scribed metal tags, and location monuments are scribed with claim name with location notice in pill bottle.
- 3) Map based on Nevada Protraction Diagram No. 158, USGS 7.5 Minute TOPO Maps, and field measurements.
- 4) Tie to Landmark: the SW corner (Cor. 3) of Claim VV 12 is 490 feet East and 170 feet South of Road Intersection at approximately Lat. 39° 52' 18.90" North and 116° 14' 53.52" West.

EUREKA COUNTY, NV 2019-238659
\$35.00 05/20/2019 07:55 AM
NEVADA ALASKA MINING CO Pgs=1
000541620190238659010013
LISA HOEHNE, CLERK RECORDER

T23N

North
Scale 1" = 500'



Road Intersection at Approx:
Lat: 39° 52' 18.90" N,
Long: 116° 14' 53.52" W.

R51E

To Highway 278