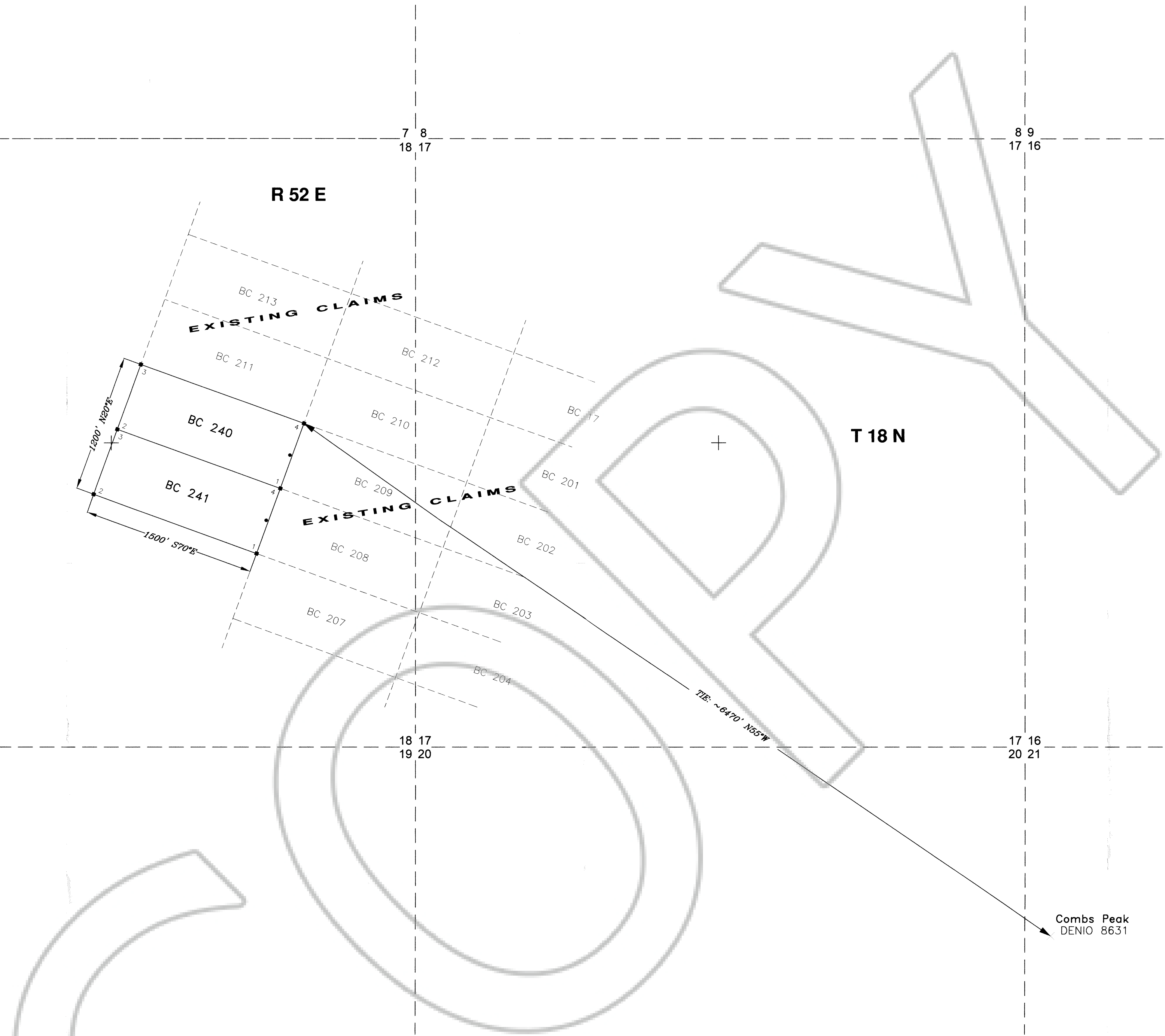


T 18 N - R 51 E
T 18 N - R 52 E



EXPLANATION

- Monuments of Location are set with 2"x2"x4' wood posts.
 - Claim corners are set with 2"x2"x4' wood posts.
- All claims measure 600' x 1500'.
- Monuments of Location are set 20' into claim.

LOCATION DATE:

BC 240 - BC 241 May 17, 2019

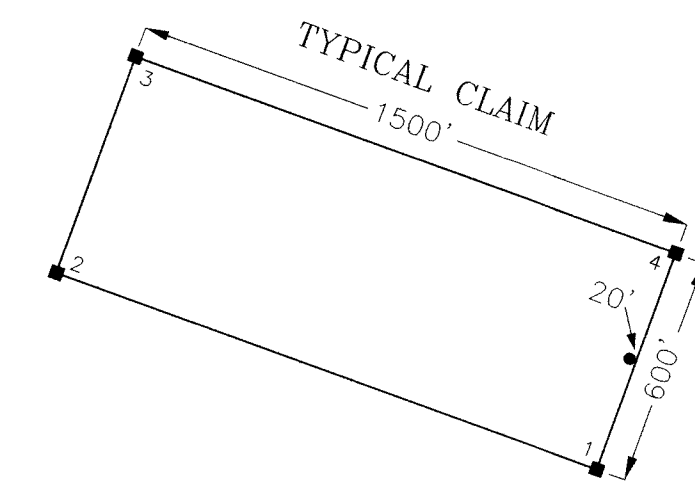
LOCATOR:

Allegiant Gold (U.S.) Ltd.
573 E. 2nd Street
Reno, NV 89502

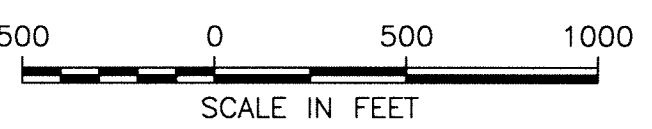
TIES:

The NE Corner (4) of BC 240 bears approximately 6470' N55°W from Combs Peak located in Section 21, unsurveyed T18N-R52E, Eureka County, Nevada.

The SE Corner (1) of BC 240 is common with the SW corner of existing BC 209 unpatented lode mining claim.



EUREKA COUNTY, NV 2019-238701
Rec \$40.00
Total \$40.00
ALLEGiant GOLD US LTD
00005473201902387010030037
LISA HOEHNE, CLERK RECORDER
05/29/2019 02:50 PM
Pgs=3



ALLEGiant GOLD (U.S.) LTD.
BC 240-241
Lode Mining Claims
Sec. 18, unsurveyed T18N-R52E,
M.D.B.&M., Eureka County, Nevada
Drawn By: Cordex Staff
Drawing: BC240-241-NAD83.dwg
Layout: 500sc-240-241
Date: May 23, 2019
Revised: