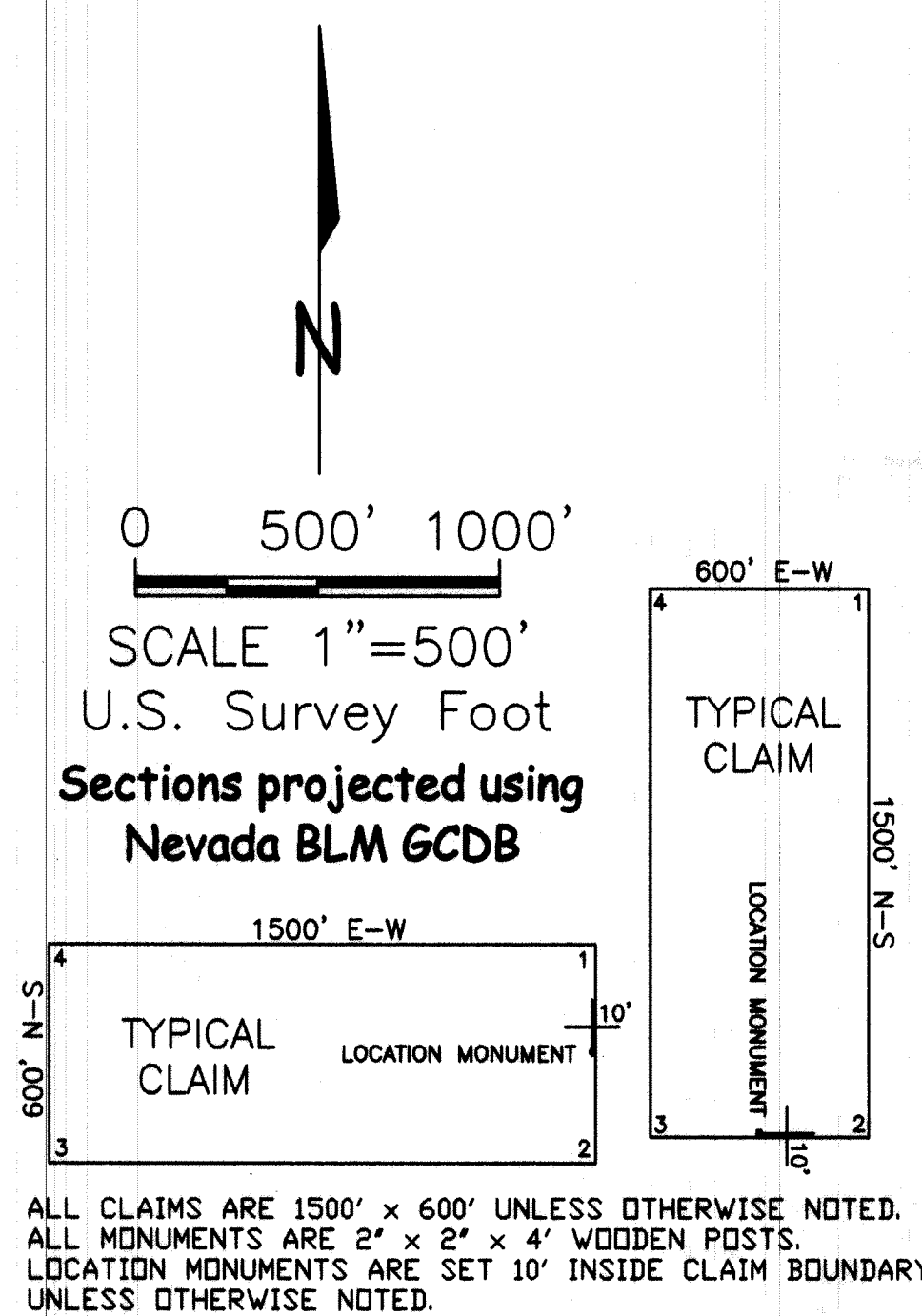


**CLAIM LOCATION DATE:**  
April 27, 2019: AE 62  
May 2, 2019: AE 63  
May 20, 2019: AE 64

**NOTES:**  
The Location Monuments for AE 62-64 are located approximately 100 feet from the claim endlines along the centerlines of the claims.  
AE 64 is approximately 1500 feet long and 100 feet wide.

**CLAIM TIES:**  
The location monument for AE 62 is located approximately 5583 feet north and 2808 feet west of the NW corner of Section 28, T22N, R51E, M.D.M.  
The location monument for AE 63 is located approximately 5212 feet north and 6233 feet west of the NW corner of Section 28, T22N, R51E, M.D.M.  
The location monument for AE 64 is located approximately 7119 feet north and 5956 feet west of the NW corner of Section 28, T22N, R51E, M.D.M.



EUREKA COUNTY, NV 2019-238892  
Rec \$55.00  
Total \$55.00 06/11/2019 10:36 AM  
MCEWEN MINING NV INC. Pgs: 1  
00009674201902388920010017  
LISA HOEHNE, CLERK RECORDER

<b>LODE MINING CLAIM MAP</b> <b>AE 62-64</b> T22N, R51E, M.D.M. EUREKA COUNTY, NEVADA		
Locator: <b>McEwen Mining Nevada Inc.</b> 2215 N. 5th St. Elko, Nevada 89801		
Drawn By: <b>ARD</b>	June 2019	Sheet 1 of 1