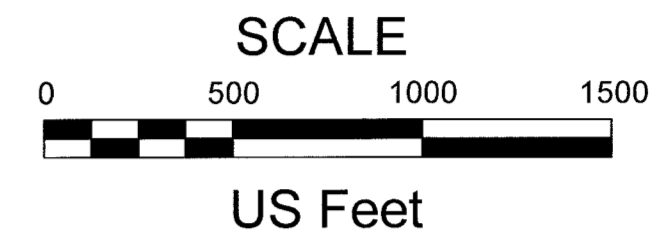


Legal Description

Patent 27-2003-0098
 Mount Diablo Meridian, Nevada
 T. 19 N., R. 53 E.,
 sec.3, Lots 1-4, S½SE¼, S½SW¼;
 sec.4, SE¼SE¼;
 sec.9, E½NE¼, E½SE¼, W½NE¼, E½NW¼, NE¼SW¼, NW¼SE¼;
 sec.10, Lots 1-4, N½, W½SW¼, E½SE¼, NW¼SE¼;
 sec.11, W½SW¼;
 sec.14, NW¼NW¼;
 sec.15, Lots 1-6;
 sec.16, NE¼NE¼.
 1,644.94 acres Record
 1,672.67 acres Measured

Monument Symbols

- ▲ Control Station
- ◆ Section Corner
- ◇ ¼ Corner
- ▲ Standard Corner
- ▼ Closing Corner
- 1/16th Corner
- Mineral Survey Corner
- N/M Not Monumented



I, Loyal D. Olson III, Nevada Professional Land Surveyor No. 5517, do hereby certify that this map is an accurate representation of a survey performed under my supervision at the instance of Ruby Hill Mining Company LLC. for the purpose of marking the exterior boundaries of Federal Patent 27-2003-0098. I also certify that the monuments are of the character and occupy the positions indicated and are sufficient to retracement of this survey.



EUREKA COUNTY, NV
 LAND-ROS
 Rec \$49.00
 Total \$49.00
 RUBY HILL MINING CO LLC
 2020-240066
 02/06/2020 08:54 AM
 Pgs=3
 90071102020020080000035
 LISA HOEHNE, CLERK RECORDER

Sheet 1 of 3

RECORD OF SURVEY
 Exterior Boundaries of
 U.S. Patent 27-2003-0098
 Sections 3, 4, 9, 10, 11, 14, 15, & 16
 Township 19 North, Range 53 East
 Mount Diablo Meridian, Eureka County, Nevada
 Prepared for
 Ruby Hill Mining Company LLC
 Exterior Boundary Detail

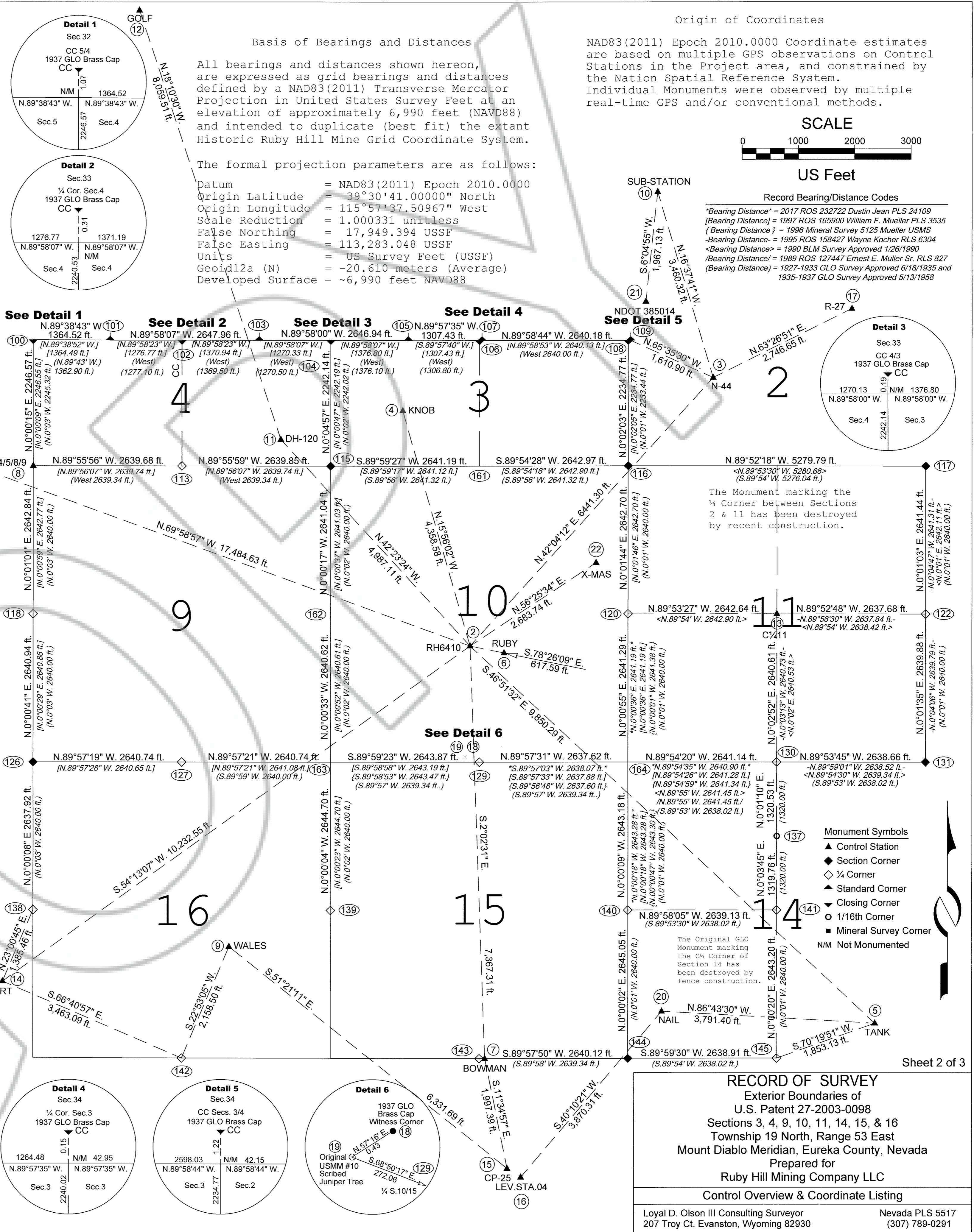
Loyal D. Olson III Consulting Surveyor
 207 Troy Ct. Evanston, Wyoming 82930

Nevada PLS 5517
 (307) 789-0291

Coordinate Listing & Monument Descriptions

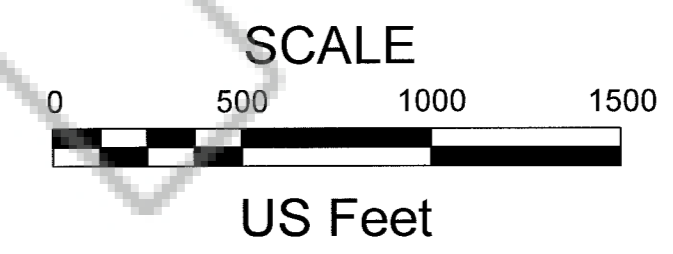
| Pt# | NAD83 Latitude | NAD83 Longitude | Corner/Monument Description |
|-----|---------------------|----------------------|---|
| 1 | 39°32'47.12259" (N) | 116°02'58.49914" (W) | P074 UNAVCO Plate Boundary Observatory Station |
| 2 | 39°31'48.09887" (N) | 115°59'28.82460" (W) | RH6410 Ruby Hill GPS Base Station |
| 3 | 39°32'35.35090" (N) | 115°58'33.77110" (W) | Bench Mark N-44 1934 USCGS Bronze Disc in conc. |
| 4 | 39°32'29.50222" (N) | 115°59'44.11163" (W) | KNOB (existing 5/8 inch ReBar w/ new plastic cap) |
| 5 | 39°30'41.56607" (N) | 115°57'57.11893" (W) | TANK 1954 USCGS Tri/Sta. Bronze Disc in bedrock |
| 6 | 39°31'46.87765" (N) | 115°59'21.10460" (W) | RUBY 2017 3/4 inch Aluminum Pipe Cap in concrete |
| 7 | 39°30'35.35778" (N) | 115°59'25.44425" (W) | BOWMAN (existing ReBar) |
| 8 | 39°32'19.81463" (N) | 116°01'07.83282" (W) | Cor. Secs. 5/4/8/9 1937 GLO Brass Cap # |
| 9 | 39°30'55.07438" (N) | 116°00'23.41548" (W) | WALES (existing ReBar) |
| 10 | 39°33'08.10681" (N) | 115°58'46.41574" (W) | SUB-STATION (existing ReBar) |
| 11 | 39°32'24.47627" (N) | 116°00'11.74275" (W) | DH-120 Nail in 12 inch diameter concrete collar |
| 12 | 39°33'40.11720" (N) | 116°00'43.87699" (W) | GOLF 5/8 inch (existing ReBar) |
| 13 | 39°31'53.69118" (N) | 115°58'19.33308" (W) | C¼ Section 11 1989 BLM Aluminum Cap |
| 14 | 39°30'48.94690" (N) | 116°01'14.68330" (W) | DIRT 2017 Plastic Cap on 5/8 inch Rebar |
| 15 | 39°30'16.02691" (N) | 115°59'20.32130" (W) | CP-25 3/4 inch Steel Bar Concreted in solid rock |
| 16 | 39°30'14.47663" (N) | 115°59'17.23389" (W) | Level Station 04 1 inch square Steel Bar in rock |
| 17 | 39°32'47.48440" (N) | 115°58'02.41972" (W) | Bench Mark R-27 1931 USCGS Bronze Disc in conc. |
| 18 | 39°31'28.58618" (N) | 115°59'29.93211" (W) | USMM #10 1937 GLO Brass Cap (Witness Corner) |
| 19 | 39°31'28.58388" (N) | 115°59'29.93671" (W) | USMM #10 ORIGINAL SCRIBED TREE |
| 20 | 39°30'43.70105" (N) | 115°58'45.39977" (W) | Caribou North ??? TOP LARGE NAIL |
| 21 | 39°32'48.78080" (N) | 115°58'49.07010" (W) | 385014 1995 Nevada DOT 2 inch Aluminum Cap |
| 22 | 39°32'02.76861" (N) | 115°59'00.30145" (W) | X-MAS South Bolt (drill hole X-mas tree) |
| 100 | 39°32'42.02098" (N) | 116°01'07.84935" (W) | CC Secs. 5/4 1937 GLO Brass Cap # |
| 101 | 39°32'41.93534" (N) | 116°00'50.43679" (W) | SC Secs. 32/33 1927 GLO Brass Cap # |
| 102 | 39°32'41.93867" (N) | 116°00'34.14378" (W) | N¼ Sec. 4 1937 GLO Brass Cap # |
| 103 | 39°32'41.93526" (N) | 116°00'16.64590" (W) | S¼ Sec. 33 1927 GLO Brass Cap # |
| 104 | 39°32'41.93569" (N) | 116°00'00.43759" (W) | CC Secs. 3/4 1937 GLO Brass Cap # |
| 105 | 39°32'41.93148" (N) | 115°59'42.86805" (W) | SC Secs. 33/34 1927 GLO Brass Cap *** |
| 106 | 39°32'41.92865" (N) | 115°59'26.73184" (W) | N¼ Sec. 3 1937 GLO Brass Cap # |
| 107 | 39°32'41.92706" (N) | 115°59'26.18379" (W) | S¼ Sec. 34 1927 GLO Brass Cap # |
| 108 | 39°32'41.93692" (N) | 115°58'53.02995" (W) | CC Secs. 3/2 1935 GLO Brass Cap # |
| 109 | 39°32'41.92481" (N) | 115°58'52.49216" (W) | SC Secs. 34/35 1927 GLO Brass Cap # |
| 110 | 39°32'32.83647" (N) | 116°00'17.29796" (W) | SE 1/16 Sec. 4 2017 3/4 Aluminum Cap |
| 111 | 39°32'32.82502" (N) | 116°00'00.44934" (W) | S 1/16 Secs. 4/3 2017 3/4 Aluminum Cap |
| 112 | 39°32'19.80736" (N) | 116°00'50.99170" (W) | W 1/16 Secs. 4/9 2017 3/4 Aluminum Cap |
| 113 | 39°32'19.79941" (N) | 116°00'34.15058" (W) | ¼ Cor. Secs. 4/9 1937 GLO Brass Cap # |
| 114 | 39°32'19.79096" (N) | 116°00'17.30836" (W) | E 1/16 Secs. 4/9 2017 3/4 Aluminum Cap |
| 115 | 39°32'19.78183" (N) | 116°00'00.46615" (W) | Cor. Secs. 4/3/9/10 1937 GLO Brass Cap # |
| 116 | 39°32'19.84572" (N) | 115°58'53.04039" (W) | Cor. Secs. 3/2/10/11 2017 3/4 Aluminum Cap |
| 117 | 39°32'19.73572" (N) | 115°57'45.67047" (W) | Cor. Secs. 2/1/11/12 1937 GLO Brass Cap # |
| 118 | 39°31'53.70378" (N) | 116°01'07.82097" (W) | ¼ Cor. Secs. 8/9 1937 GLO Brass Cap # |
| 119 | 39°31'53.70019" (N) | 116°00'50.97741" (W) | C-W 1/16 Sec. 9 2017 3/4 Aluminum Cap |
| 120 | 39°31'53.73626" (N) | 115°58'53.04952" (W) | ¼ Cor. Secs. 10/11 2016 1½ Alum. Cap PLS 24109 |
| 121 | 39°31'53.71324" (N) | 115°58'36.19203" (W) | C-W 1/16 Sec. 14 Rod & Cap PLS 24109 |
| 122 | 39°31'53.63863" (N) | 115°57'45.67987" (W) | ¼ Secs. 11/12 1937 GLO Brass Cap # |
| 123 | 39°31'40.65487" (N) | 116°00'50.96943" (W) | SW 1/16 Sec. 9 2017 3/4 Aluminum Cap |
| 124 | 39°31'40.65136" (N) | 116°00'34.12546" (W) | C-S 1/16 Sec. 9 2017 3/4 Aluminum Cap |
| 125 | 39°31'40.64812" (N) | 116°00'17.28192" (W) | SE 1/16 Sec. 9 2017 3/4 Aluminum Cap |
| 126 | 39°31'27.61163" (N) | 116°01'07.80583" (W) | NW Sec. 16 1937 GLO Brass Cap # |
| 127 | 39°31'27.60680" (N) | 116°00'34.11710" (W) | ¼ Cor. Secs. 9/16 1937 GLO Brass Cap # |
| 128 | 39°31'27.60353" (N) | 116°00'17.27268" (W) | Bndy E 1/16 Cor. Secs. 9/16 2017 3/4 Aluminum Cap |
| 129 | 39°31'27.61439" (N) | 115°59'26.69956" (W) | ¼ Cor. Secs. 10/15 1935 GLO Brass Cap ** |
| 130 | 39°31'27.60231" (N) | 115°58'19.35681" (W) | ¼ Cor. Secs. 11/14 1935 GLO Brass Cap * |
| 131 | 39°31'27.55693" (N) | 115°57'45.69456" (W) | Cor. Secs. 11/12/14/13 1937 GLO Brass Cap # |
| 132 | 39°31'14.54694" (N) | 116°00'17.26775" (W) | Bndy NE 1/16 Sec. 16 2017 3/4 Aluminum Cap |
| 133 | 39°31'14.53492" (N) | 116°00'00.42050" (W) | Bndy N 1/16 Secs. 16/15 2017 3/4 Aluminum Cap |
| 134 | 39°31'14.55560" (N) | 115°59'26.70317" (W) | Bndy C-N 1/16 Sec. 15 YELLOW RC PLS 24109 |
| 135 | 39°31'14.58560" (N) | 115°58'53.04564" (W) | Bndy N 1/16 Secs. 15/14 Red PC on Rebar FRONTIER |
| 136 | 39°31'14.57192" (N) | 115°58'36.20626" (W) | Bndy N-W 1/16 Sec. 14 Rod/Cap PLS 24109 |
| 137 | 39°31'14.55559" (N) | 115°58'19.36039" (W) | C-N 1/16 Sec. 14 1936 GLO Brass Cap in mnd stones |
| 138 | 39°31'14.54928" (N) | 116°01'07.78527" (W) | ¼ Cor. Secs. 17/16 1937 GLO Brass Cap # |
| 139 | 39°31'01.47024" (N) | 116°00'00.41273" (W) | ¼ Cor. Secs. 16/15 1937 GLO Brass Cap # |
| 140 | 39°31'01.52628" (N) | 115°58'53.04130" (W) | ¼ Cor. Secs. 15/14 1935 GLO Brass Cap # |
| 141 | 39°31'01.51649" (N) | 115°58'19.37655" (W) | C¼ Sec. 14 BASE T-POST LS 3144 Orig. Mon. Missing |
| 142 | 39°30'35.42279" (N) | 116°00'34.10865" (W) | ¼ Cor. Secs. 16/21 1937 GLO Brass Cap w/mnd stns |
| 143 | 39°30'35.36958" (N) | 115°59'26.70765" (W) | ¼ Cor. Secs. 15/22 1937 GLO Brass Cap * |
| 144 | 39°30'35.39341" (N) | 115°58'53.03383" (W) | Cor. Secs. 15/14/22/23 1935 GLO Brass Cap mnd/stn |
| 145 | 39°30'35.40194" (N) | 115°58'19.37543" (W) | ¼ Cor. Secs. 14/23 1935 GLO Brass Cap w/mnd stns. |
| 146 | 39°31'49.39313" (N) | 115°59'27.87869" (W) | MS 5125 c4/4 AHE/AHE-1 1994 3/4 inch Alum. Cap ## |
| 147 | 39°31'49.69401" (N) | 115°58'29.54312" (W) | MS 5125 c1/1 S6/S7 1994 3/4 inch Alum. Cap ## |
| 148 | 39°31'45.57008" (N) | 115°58'11.19593" (W) | MS 5125 c2 S7 1994 3/4 inch Alum. Cap ## |
| 149 | 39°31'41.79507" (N) | 115°59'32.27687" (W) | MS 5125 c4/4 S5/S3 1994 3/4 inch Alum. Cap ## |
| 150 | 39°31'40.68566" (N) | 115°59'24.53522" (W) | MS 5125 c1/1/1 S3/S1/S 1994 3/4 inch Alum. Cap ## |
| 151 | 39°31'33.34154" (N) | 115°59'20.37681" (W) | MS 5125 c2/2 M8/H2 1994 3/4 inch Alum. Cap ## |
| 152 | 39°31'27.92369" (N) | 115°59'23.48876" (W) | MS 5125 c1/3 H-122/H3-5125 1994 3/4 inch Alum. Cap ## |
| 153 | 39°31'27.14530" (N) | 115°59'32.31223" (W) | MS 5125 c3 Snow 1994 3/4 inch Alum. Cap ## |
| 154 | 39°31'25.26702" (N) | 115°59'04.24167" (W) | MS 5125 c2/2 M6/M7 1994 3/4 inch Alum. Cap ## |
| 155 | 39°31'19.84855" (N) | 115°59'07.35082" (W) | MS 5125 c3/3 H-122/M7-5125 3/4 inch Alum. Cap ## |
| 156 | 39°31'17.23668" (N) | 115°58'48.20710" (W) | MS 5125 c1/1/1 M/M1/M6/M 1994 DISTURBED/BURIED |
| 157 | 39°31'13.10419" (N) | 115°58'29.85197" (W) | MS 5125 c2/2 M/M1 1994 3/4 inch Alum. Cap ## |
| 158 | 39°31'11.81774" (N) | 115°58'51.31368" (W) | MS 5125 c4/4 M7/M 1994 3/4 inch Alum. Cap ## |
| 159 | 39°31'07.69000" (N) | 115°58'32.96460" (W) | MS 5125 c3 March 1994 3/4 inch Alum. Cap ## |
| 160 | 39°31'00.11439" (N) | 115°59'52.35611" (W) | MS 4886 c3 Cyanide 2 inch GALVANIZED POST |
| 161 | 39°32'19.79617" (N) | 115°59'26.76461" (W) | ¼ Cor. Secs. 3/10 covered by mine dump Calculated |
| 162 | 39°31'53.68869" (N) | 116°00'00.44851" (W) | ¼ Cor. Secs. 9/10 covered by mine dump Calculated |
| 163 | 39°31'27.59969" (N) | 116°00'00.42826" (W) | Cor.S. 9/10/15/16 covered by mine dump Calculated |
| 164 | 39°31'27.64060" (N) | 115°58'53.05061" (W) | Cor.S. 10/11/14/15 in open pit mine Calculated |

Recovered Monument conforms to description returned by William F. Mueller in ROS 165900
 ## Recovered Monument conforms to description in Official Record of Mineral Survey No. 5125
 * Original Monument found leaning, returned to plumb and rebuilt mound of stones
 ** Original Monument loose in large mound of stones. Original 1937 Field Notes describe an '+' scribed in bedrock at base of monument, which was recovered during this survey, the Original GLO Monument was reset over the original '+' and the mound of stones rebuilt
 *** Original Stone bears N.64°E., 0.47 feet distant from 1927 GLO Cap.



Monument Symbols

- ▲ Control Station
- ◆ Section Corner
- ◇ ¼ Corner
- ▲ Standard Corner
- ▼ Closing Corner
- 1/16th Corner
- Mineral Survey Corner
- N/M Not Monumented

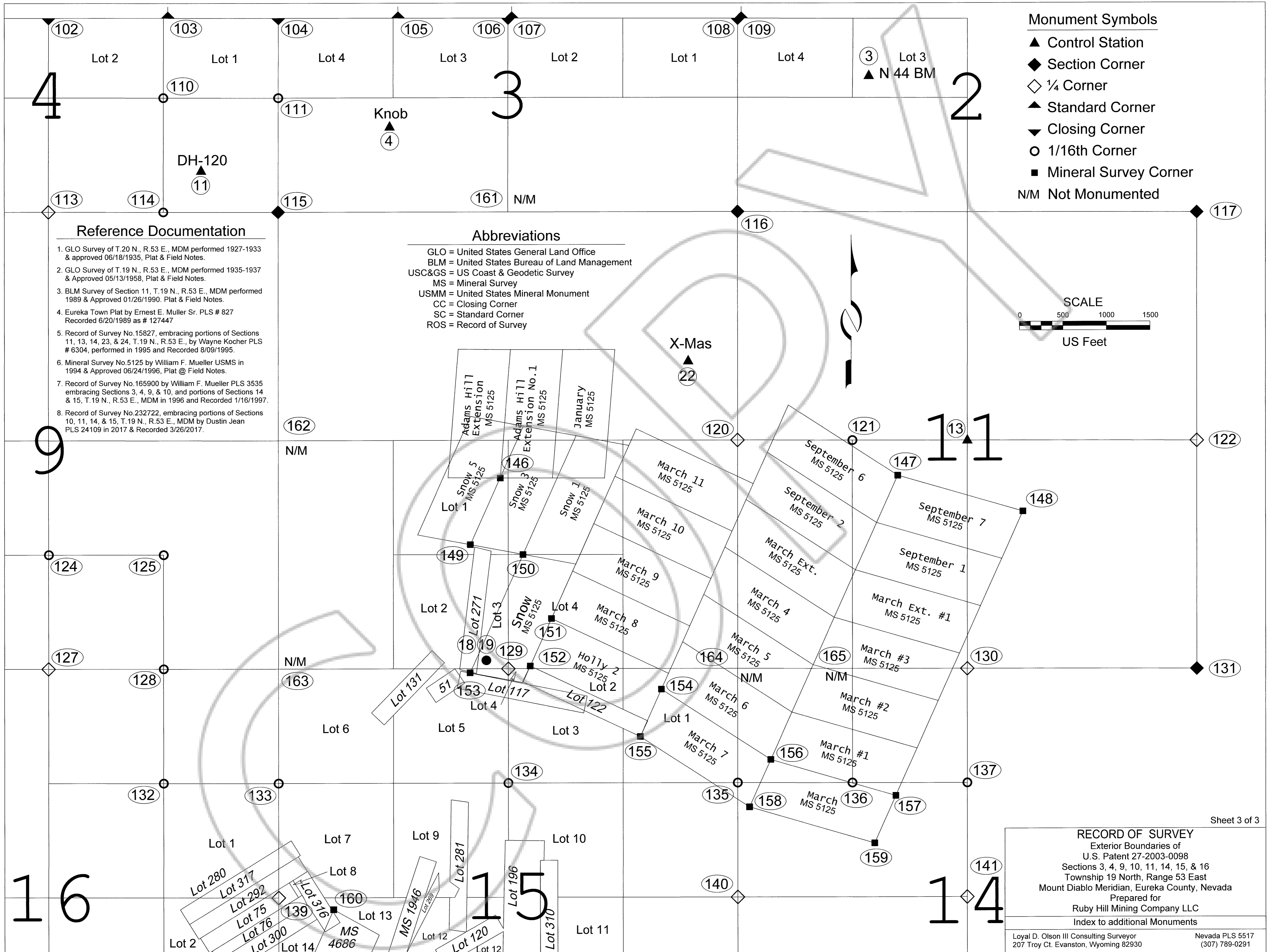


Reference Documentation

1. GLO Survey of T.20 N., R.53 E., MDM performed 1927-1933 & approved 06/18/1935, Plat & Field Notes.
2. GLO Survey of T.19 N., R.53 E., MDM performed 1935-1937 & Approved 05/13/1958, Plat & Field Notes.
3. BLM Survey of Section 11, T.19 N., R.53 E., MDM performed 1989 & Approved 01/26/1990, Plat & Field Notes.
4. Eureka Town Plat by Ernest E. Muller Sr. PLS # 827 Recorded 6/20/1989 as # 127447
5. Record of Survey No.15827, embracing portions of Sections 11, 13, 14, 23, & 24, T.19 N., R.53 E., by Wayne Kocher PLS # 6304, performed in 1995 and Recorded 8/09/1995.
6. Mineral Survey No.5125 by William F. Mueller USMS in 1994 & Approved 06/24/1996, Plat @ Field Notes.
7. Record of Survey No.165900 by William F. Mueller PLS 3535 embracing Sections 3, 4, 9, & 10, and portions of Sections 14 & 15, T.19 N., R.53 E., MDM in 1996 and Recorded 1/16/1997.
8. Record of Survey No.232722, embracing portions of Sections 10, 11, 14, & 15, T.19 N., R.53 E., MDM by Dustin Jean PLS 24109 in 2017 & Recorded 3/26/2017.

Abbreviations

- GLO = United States General Land Office
- BLM = United States Bureau of Land Management
- USC&GS = US Coast & Geodetic Survey
- MS = Mineral Survey
- USMM = United States Mineral Monument
- CC = Closing Corner
- SC = Standard Corner
- ROS = Record of Survey



RECORD OF SURVEY
 Exterior Boundaries of
 U.S. Patent 27-2003-0098
 Sections 3, 4, 9, 10, 11, 14, 15, & 16
 Township 19 North, Range 53 East
 Mount Diablo Meridian, Eureka County, Nevada
 Prepared for
 Ruby Hill Mining Company LLC
 Index to additional Monuments

Loyal D. Olson III Consulting Surveyor
 207 Troy Ct. Evanston, Wyoming 82930

Nevada PLS 5517
 (307) 789-0291