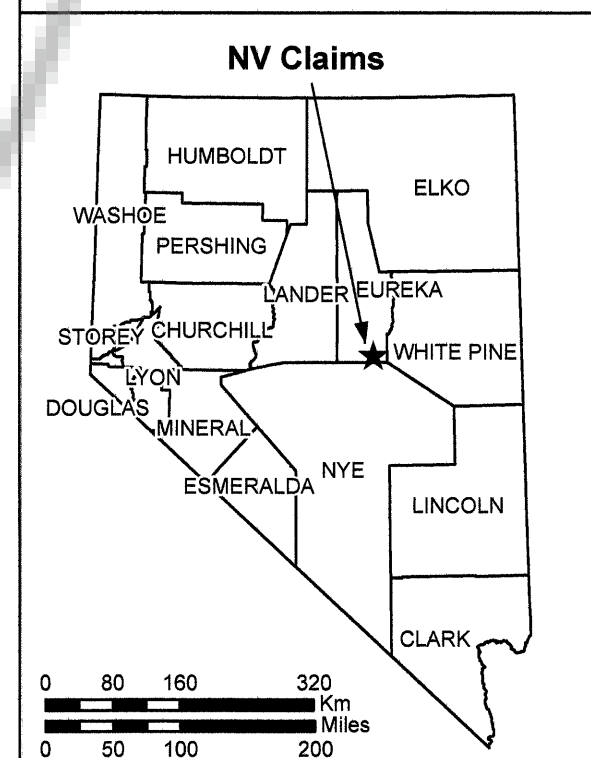
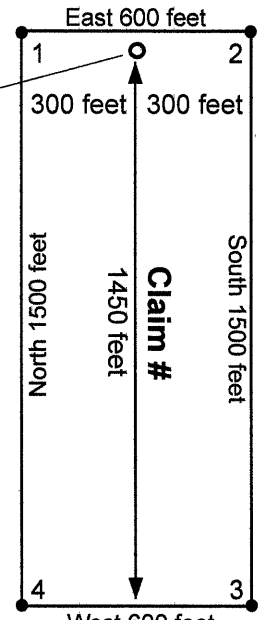


NV-015, 016, 017, 018, 019, 020, 021, 022, 023, 024, 025, 026, 027, 028, 029, 030, 031, 032 lode claims located on 8/22/2020 in Township 15 North, Range 52 East, Sections 09, 10, 11, 14, 15, 16; Mount Diablo Meridan, Eureka County, Nevada

EUREKA COUNTY, NV
 MINING AND
 PUBLIC SAFETY
 CLERK'S OFFICE
 NEVADA VANADIUM LLC
 2020-241914
 08/22/2020 03:17 PM
 LISA HOEHNE, CLERK RECORDER

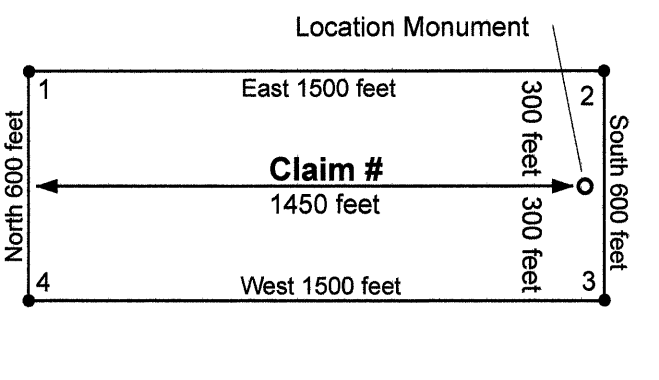


TIE POINTS:
 From the location monument for NV-016, 15186.7 feet E and 8724.6 feet N to the SE corner of Section 36, T16N-R52E, M.D.M.
 From the location monument for NV-024, 9736.5 feet E and 8417.0 feet N to the SE corner of Section 36, T16N-R52E, M.D.M.



Location Map for NV-001 to NV-032 Lode Mining Claims Sheet 2 of 2

Notes:
 Location Monuments are set 50 feet from claim end lines unless noted otherwise. All location and corner monuments are 2 inches x 2 inches x 4 feet wooden posts with scribed metal tags. All claims are 600 feet by 1500 feet unless noted otherwise.



Scale 1:6000
 1 inch = 500 feet

0 150 300 600 900 1,200 1,500 Feet
Location Map for NV-001 to 032 Lode Mining Claims Sheet 2 of 2
LOCATOR: Nevada Vanadium, LLC 51 South Suel Street Eureka, NV 89316
NV Claims 001-032 24x36 2 of 2.mxd 8/31/2020
NAD 1983 UTM Zone 11N, US feet

