

600'			
KVC 141	KVC 143	KVC 145	KVC 147
KVC 142	KVC 144	KVC 146	KVC 148
KVC 191	KVC 193	KVC 195	KVC 197
KVC 192	KVC 194	KVC 196	KVC 198
KVC 203	KVC 205	KVC 207	KVC 209
KVC 204	KVC 206	KVC 208	KVC 210
KVC 233	KVC 235	KVC 237	KVC 239
KVC 240	KVC 242	KVC 244	KVC 246

**MAP OF KVC 141-148 187-208 227-242 LODE CLAIMS**  
 EUREKA COUNTY, NEVADA, UNKNOWN MINING DISTRICT  
 LOCATED ON SEPTEMBER 14, 2020  
 LOCATED BY BIG CASINO CORP.  
 1675 SOUTH STATE STREET, SUITE B,  
 DOVER, DELAWARE 19901  
 CLAIMS IN SECTIONS 9-10, 15-16, 21-22, 27 T.21N R.51E



1" = 500'

NOTE: ALL MONUMENTS ARE  
 2"X2"X4" WOODEN POSTS  
 WITH METAL TAGS ATTACHED

ALL LOCATION MONUMENTS INSET 10 FEET  
 FROM END-LINE UNLESS OTHERWISE NOTED

EUREKA COUNTY, NV 2020-242658  
 541.950.00312.00 11/23/2020 03:47 PM  
 Total \$4,962.00 Pgs=5



0009988820202388060699  
 USA, NV, EUREKA COUNTY, CLERK RECORDER

Pg 3 of 5



**MAP OF KVC 351-456 LODE CLAIMS**

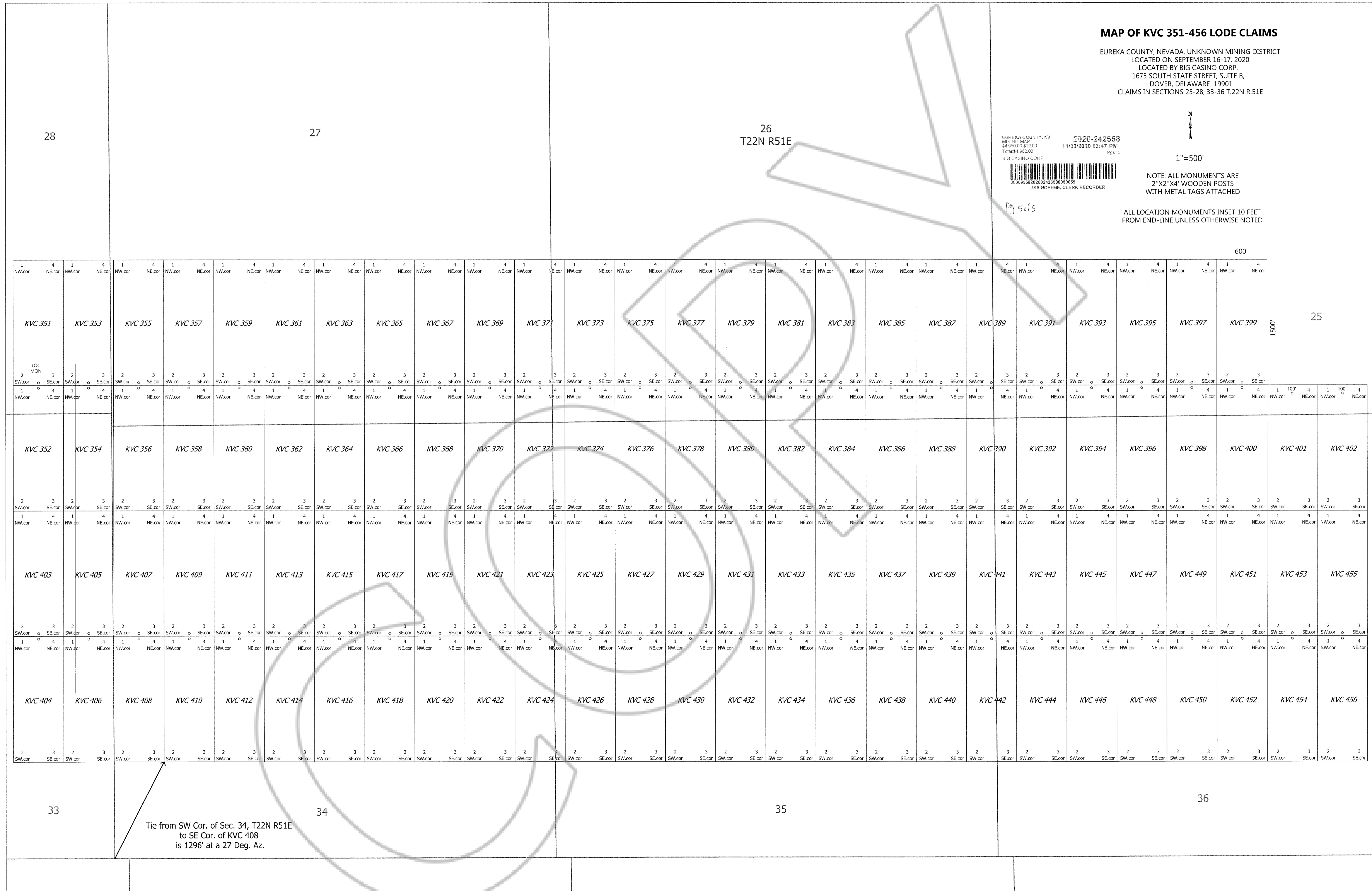
EUREKA COUNTY, NEVADA, UNKNOWN MINING DISTRICT  
 LOCATED ON SEPTEMBER 16-17, 2020  
 LOCATED BY BIG CASINO CORP.  
 1675 SOUTH STATE STREET, SUITE B,  
 DOVER, DELAWARE 19901  
 CLAIMS IN SECTIONS 25-28, 33-36 T.22N R.51E

EUREKA COUNTY, NV  
 MINING-MAP  
 24262 03:31:00  
 Total \$4,962.00  
 BIG CASINO CORP  
 2020-242658  
 11/23/2020 03:47 PM  
 Pgs=5  
 000095820202426580060059  
 JSA HOEHN, CLERK RECORDER



NOTE: ALL MONUMENTS ARE  
 2"X2"X4' WOODEN POSTS  
 WITH METAL TAGS ATTACHED

ALL LOCATION MONUMENTS INSET 10 FEET  
 FROM END-LINE UNLESS OTHERWISE NOTED



28

27

26  
T22N R51E

600'

25

1500'

33

34

35

36

Tie from SW Cor. of Sec. 34, T22N R51E  
 to SE Cor. of KVC 408  
 is 1296' at a 27 Deg. Az.