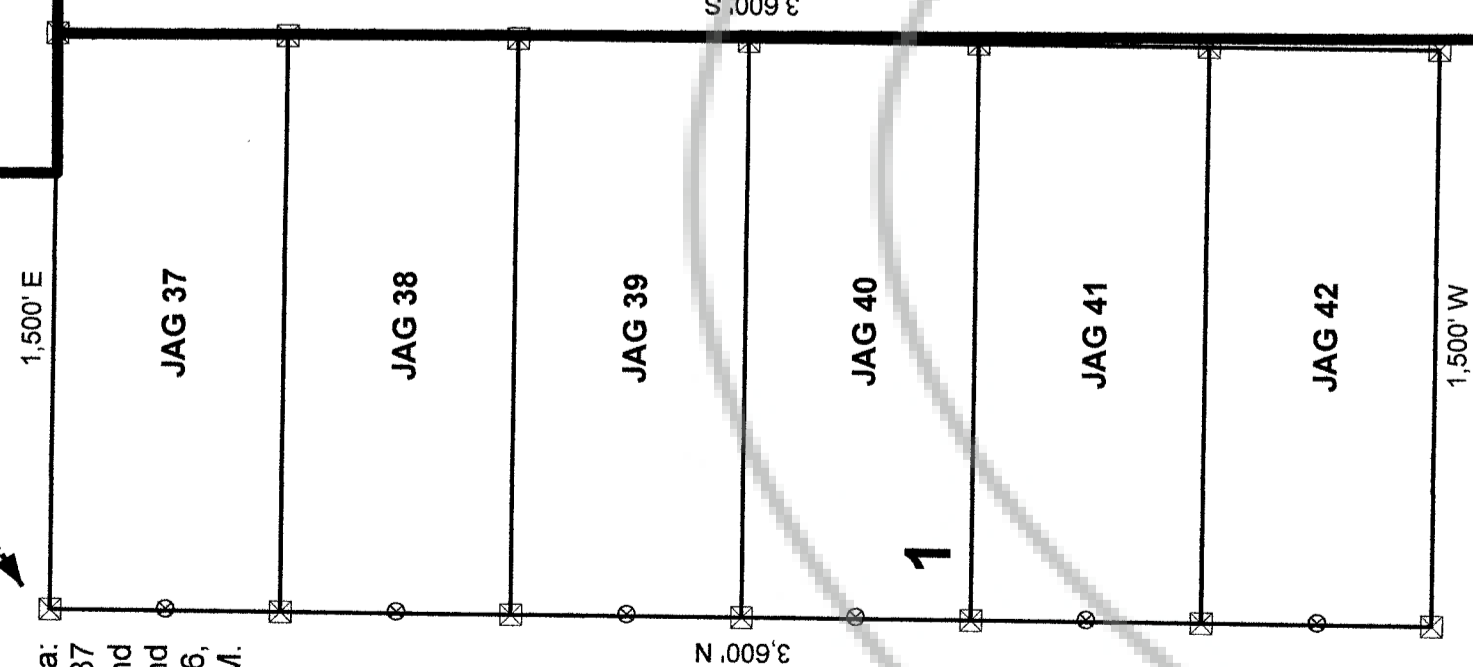


36

T 18 N, R 51 E
T 17 N, R 51 E

The Point Data:
The NW corner of JAG 37
is located 809 ft south and
1,129 ft west of the found
SE corner of Section 36,
T18N, R51E, M.D.M.

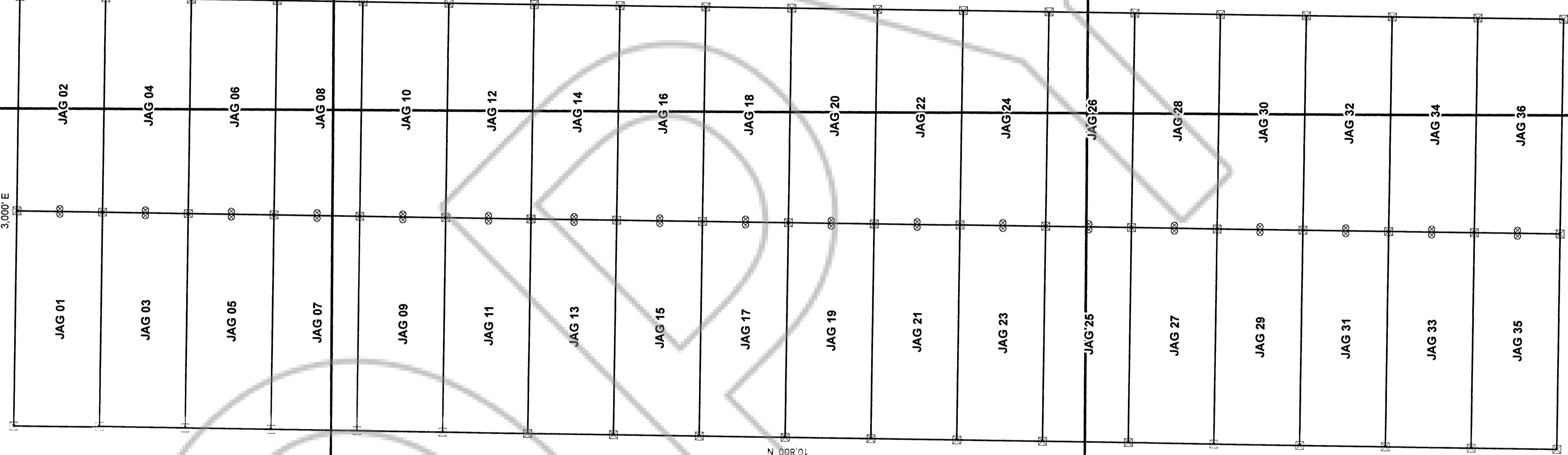


1

31

T 18 N, R 52 E
T 17 N, R 52 E

The Point Data:
The NW corner of JAG 01
is located 3,809 ft south and
3,371 ft east of the found SE corner of
Section 36, T18N, R51E, M.D.M.



5

12

7

8

18

17

JAG Unpatented Lode Mining Claims

Township 17 North, Range 51 East, Sect. 1
Township 17 North, Range 52 East, Sect. 5-8, 17-18
Township 18 North, Range 52 East, Sect. 31
Mt. Diablo Base Line and Meridian
Eureka County, Nevada

Locators:

Donald McDowell and William Matlack
2131 Stone Hill Circle
Reno, Nevada 89519

Sheet 1 of 1

Drawn by: HAW

Date: 18-Nov-2020

Donald McDowell and William Matlack

Location Dates:

September 3, 2020: JAG 01 - 36
October 7, 2020: JAG 37 - 42

Notes:

JAG 01-36 location monuments are set 20 feet from
endline along centerline of claim.
JAG 37-42 location monuments are set 5 feet from
endline along centerline of claim.

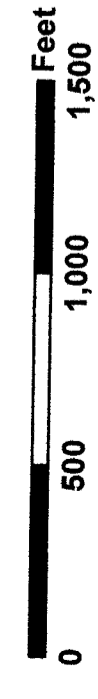
All location monuments are 2"x2"x4" wooden posts with
scribed metal tags.

All claims are 600' x 1500'.

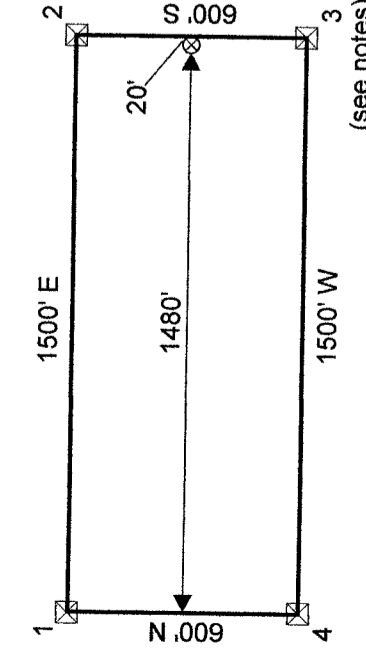
UTM NAD83

Protracted Sections
from BLM GCDB

1:6,000 1 inch = 500 feet



Typical Claim



EUREKA COUNTY, NV 2020-242703

MINING CLAIM 11/20/2020 08:37 AM Page 1

T0883542.DWG

RANGE/FROM: GEOLOGICAL

1007180832000642703010016

LISA WILDERME, CLERK/RECORDER