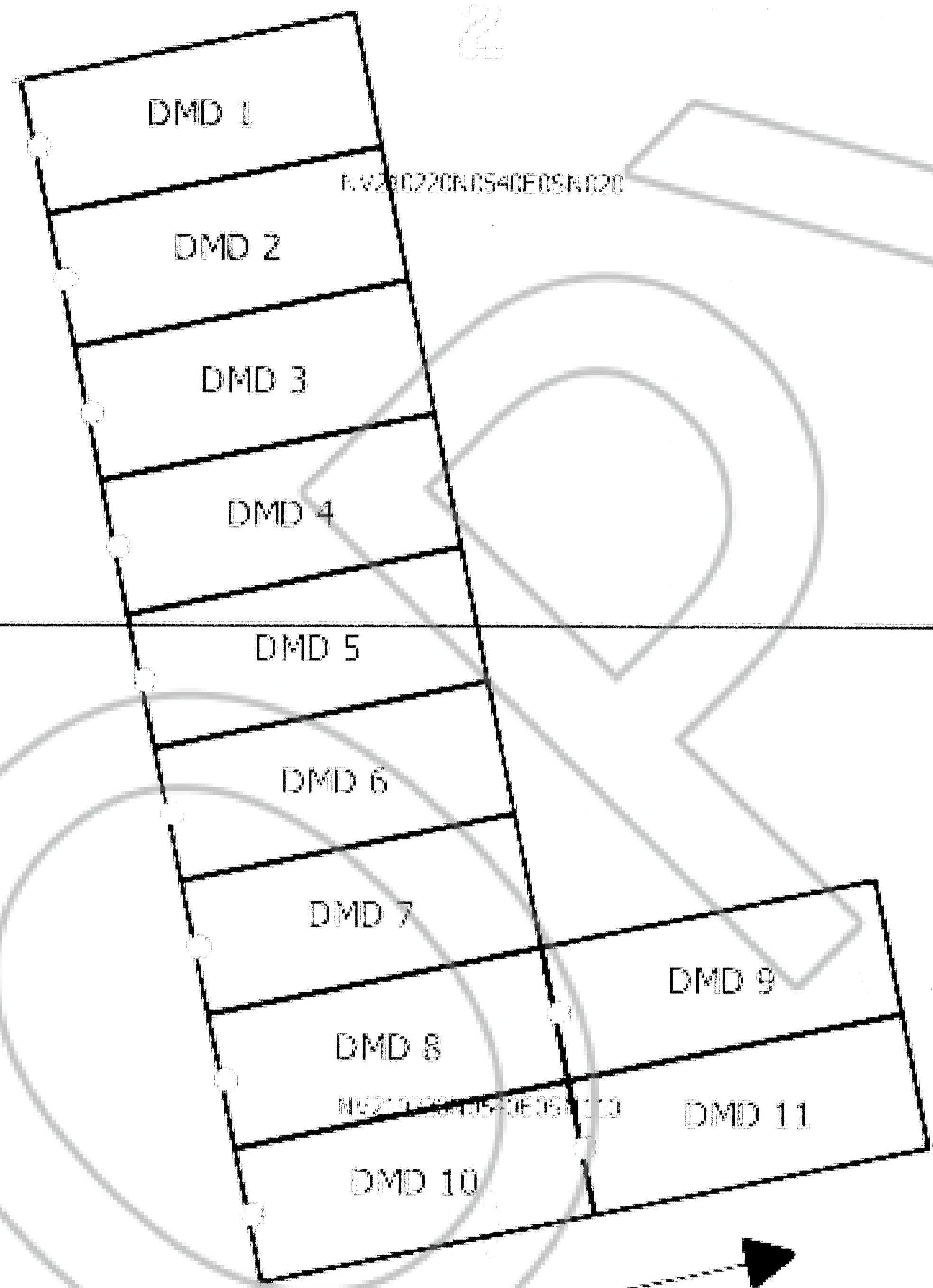
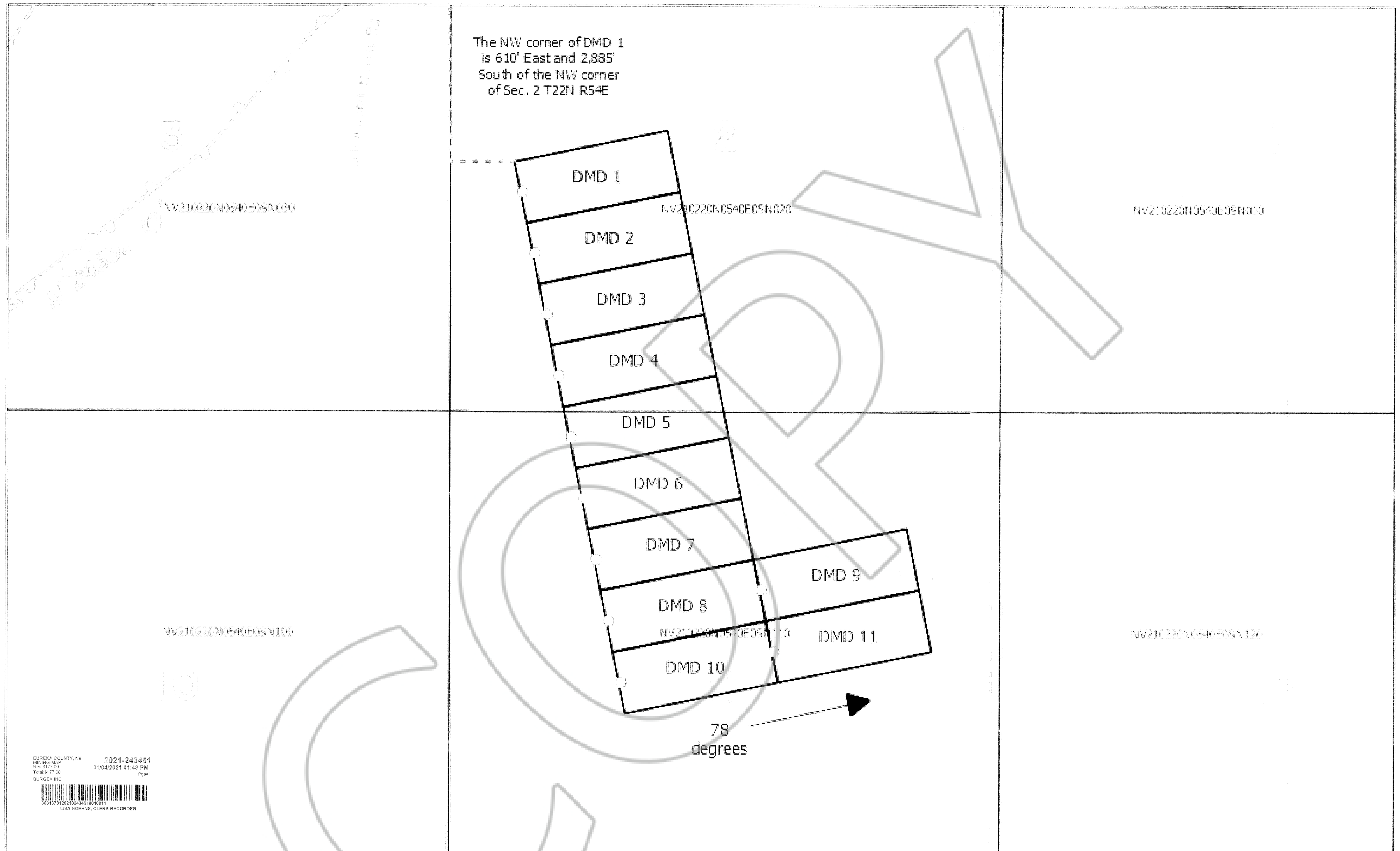


The NW corner of DMD 1
is 610' East and 2,885'
South of the NW corner
of Sec. 2 T22N R54E



78
degrees

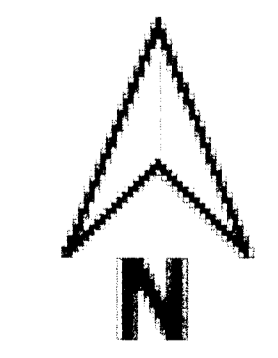


EUREKA COUNTY, NV
MINING MAP
Rec 5177.00
Total 5177.00
BURGEX INC
2021-243451
01/04/2021 01:48 PM
Pg#11
LISA HOEHNE, CLERK RECORDER

Locator: MS Development LLC,
P.O. Box 212, Glenbrook, NV
89413

Date of Location: December 19, 2020

DMD Claims
Sec. 2 & 11 T22N R54E
Eureka County, Nevada, USA
11 Lode Claims



Created: December 21, 2020

All claims are 600 x 1500' and
20.66 acres. All corners and
location monuments are marked
by a 2"x2"x48" wooden posts with
metal tags.

- Location Monument
- Claim Block
- PLSS Township

