

Scale 1" = 500'
1:6000

NOTES:
LOCATION MONUMENTS SET 10' FROM CLAIM END
CENTERLINES. ALL LOCATION MONUMENTS AND CLAIM
POSTS ARE 2"x2"x4' WOODEN STAKES.

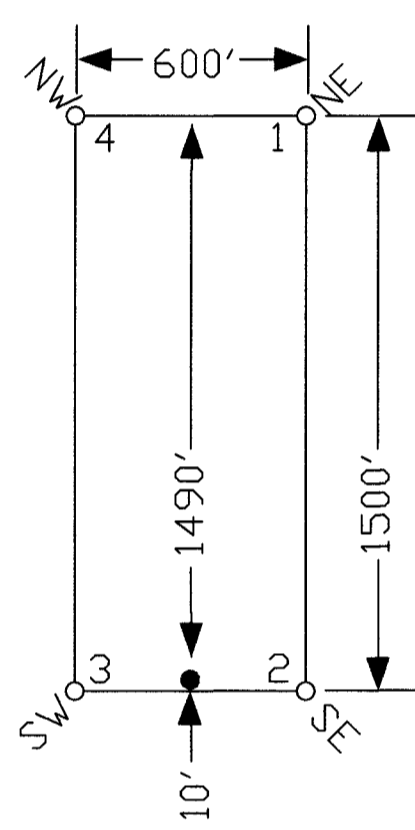
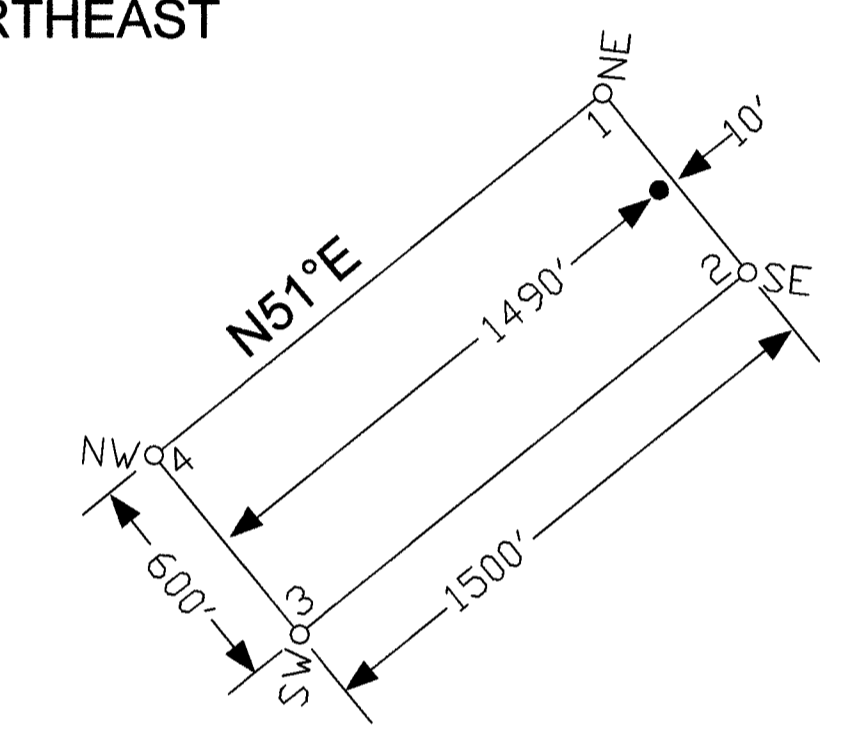
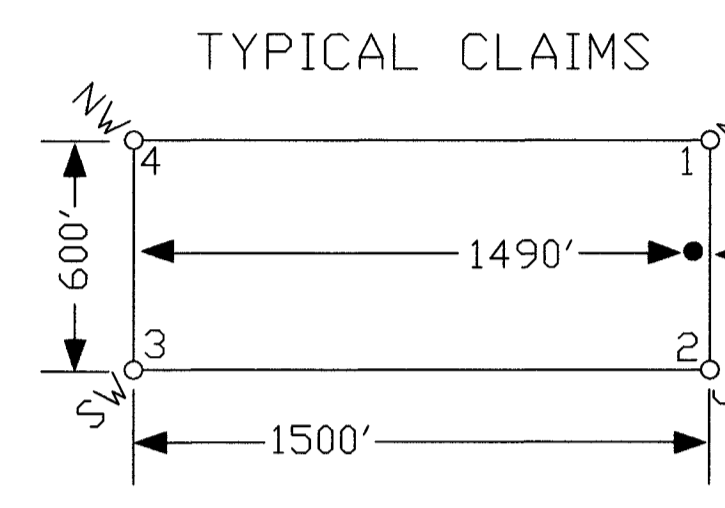
DASHED SECTION LINES INDICATE PROJECTED SECTIONS.

TIE POINT DATA:

THE NORTHEAST CORNER OF WINCHESTER 20 LIES APPROXIMATELY
3,275 FEET WEST AND 3,982 FEET SOUTH OF THE SURVEYED NORTHEAST
CORNER OF SECTION 18, T.19N., R.53E., M.D.B.M.

THE NORTHEAST CORNER OF WINCHESTER 51 LIES APPROXIMATELY
4,389 FEET WEST AND 3,043 FEET SOUTH OF THE SURVEYED NORTHEAST
CORNER OF SECTION 18, T.19N., R.53E., M.D.B.M.

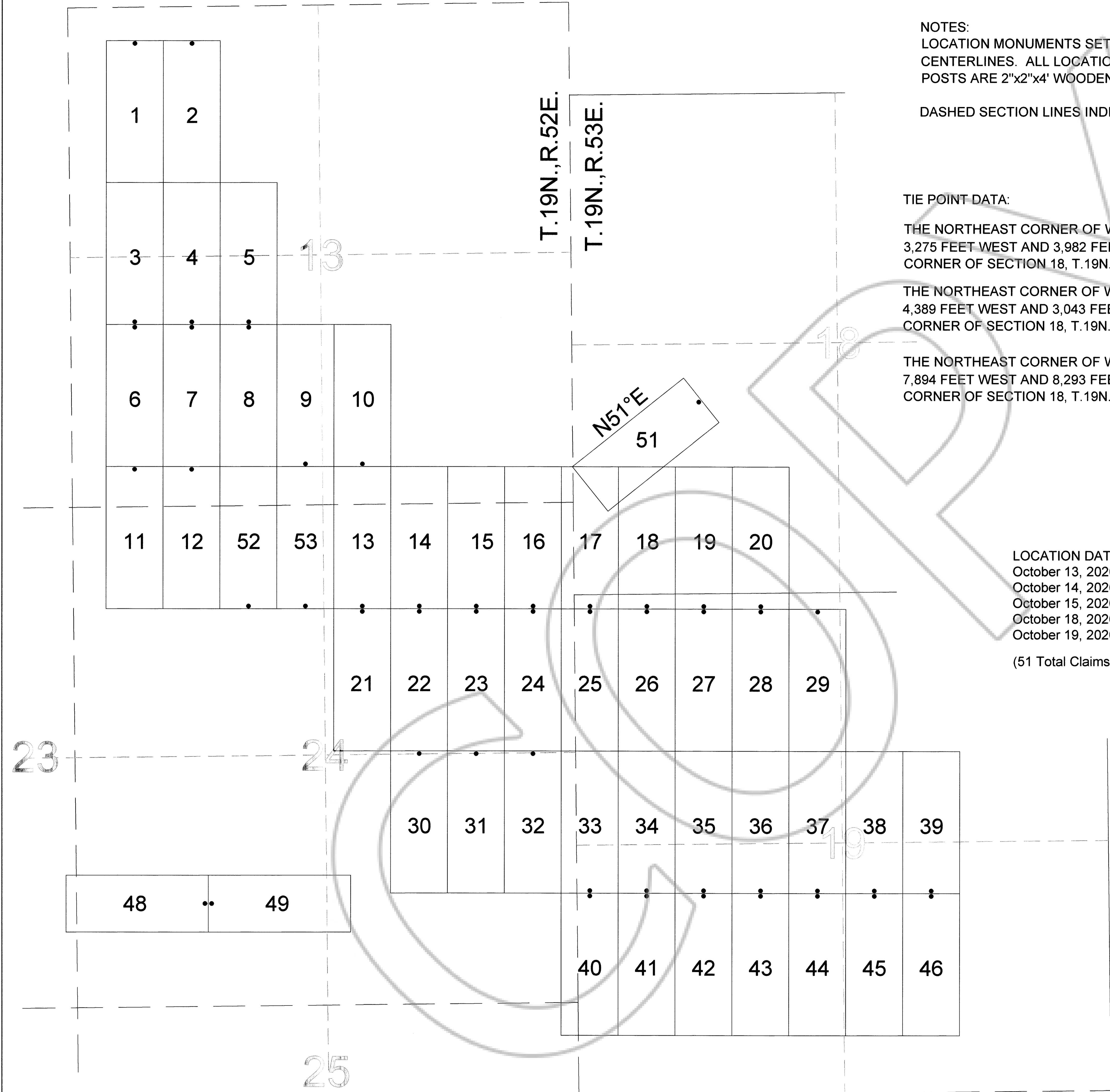
THE NORTHEAST CORNER OF WINCHESTER 49 LIES APPROXIMATELY
7,894 FEET WEST AND 8,293 FEET SOUTH OF THE SURVEYED NORTHEAST
CORNER OF SECTION 18, T.19N., R.53E., M.D.B.M.



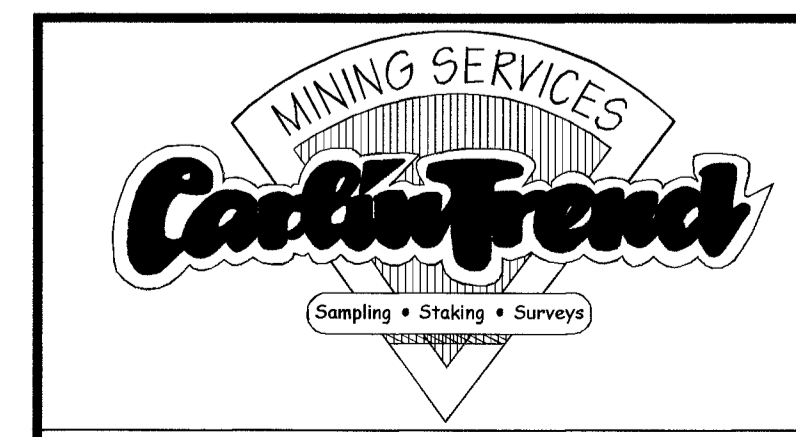
LOCATION DATES:

- October 13, 2020: Winchester 18-19,26-27
- October 14, 2020: Winchester 1-2,13-17,20-25,28-29
- October 15, 2020: Winchester 33-46
- October 18, 2020: Winchester 30-32,48-49
- October 19, 2020: Winchester 3-12,51-53

(51 Total Claims)



EUREKA COUNTY, NV 2021-243503
 MINING MAP 01/04/2021 02:03 PM
 \$750.00 \$10.00 Total \$777.00 Pgs:1
 MERCURY EXPLORATION NEVADA
 INC. 00010833202102435030010017
 LISA HOEHN, CLERK RECORDER



Loc: Mercury Exploration Nevada Inc
 109 Schiller Bay NW, Calgary, Alberta T3L 1J9 Can
 Winchester 1-46,48-49,51-53 Lode Claim
 T.19N.,R.52&53E.; Eureka County, Nevada

369 - 5th STREET
 PH: (775) 778-0668 ELKO, NV 89801 FAX: (775) 778-0687

DATE: December 2020
 ACAD FILE NAME: clients\20\mercorp\signal\sig0920.dwg
 DRAWN BY: sms
 PLOT SCALE: 1" = 500'