

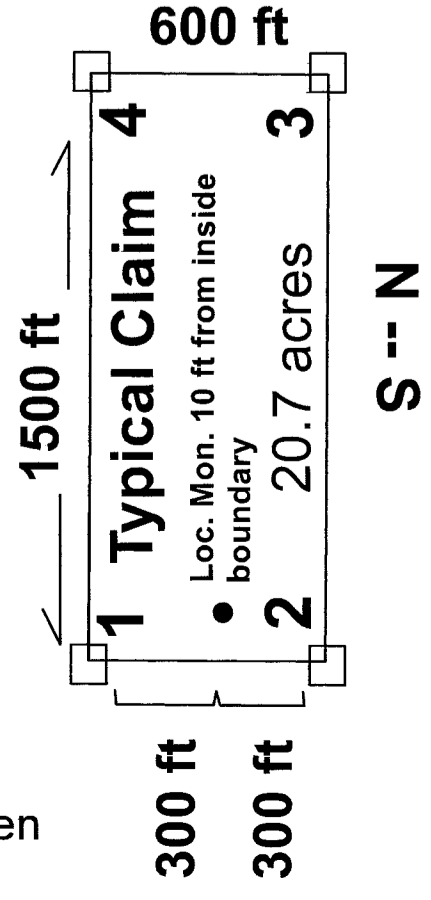
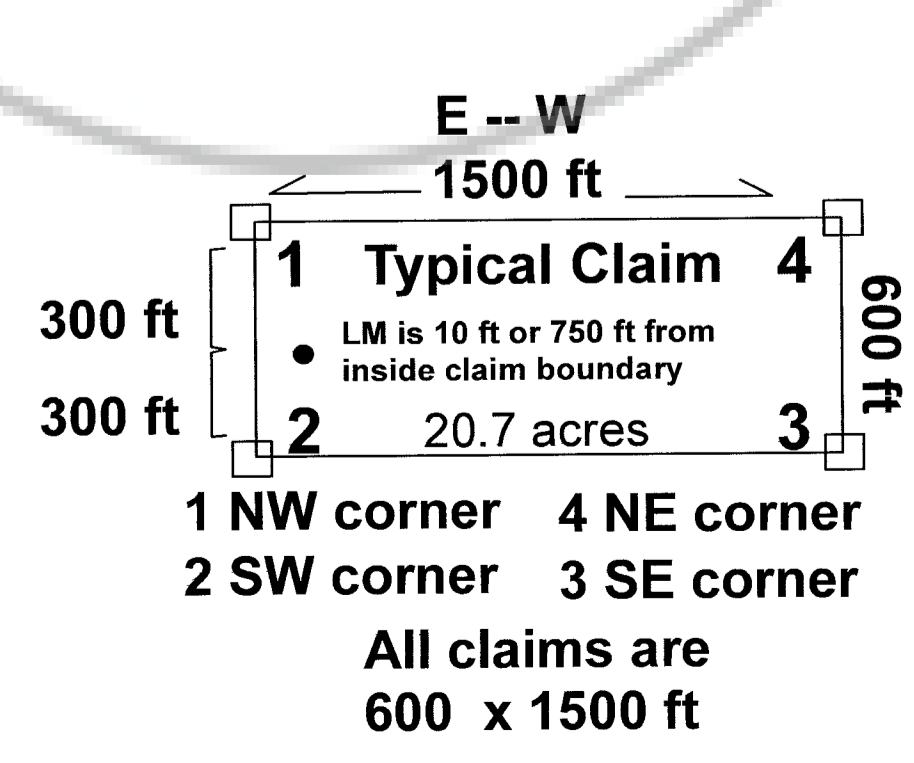
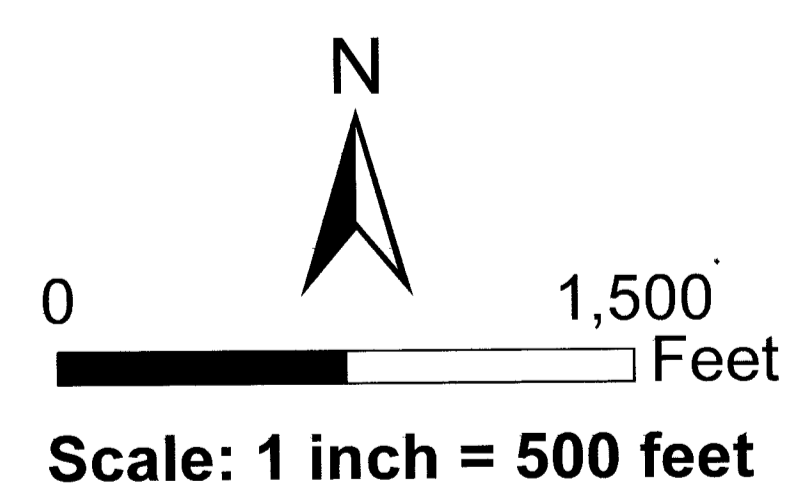
Tie: From the NW corner of RC-472, 19,373 feet west and 5,338 feet south to the public survey monument for the SE corner of section 33, T22N, R50E and the NW corner of section 3, T21N, R50E.

Tie: From the NW corner of RC-473, 20,873 feet west and 3,938 feet south to the public survey monument for the SE corner of section 33, T22N, R50E and the NW corner of section 3, T21N, R50E.

Tie: From the NW corner of RC-173, 10,373 feet west and 2,662 feet north to the public survey monument for the SE corner of section 33, T22N, R50E and the NW corner of section 3, T21N, R50E.

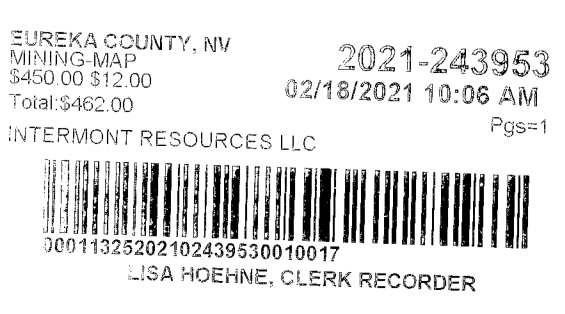
Amended Location Data

Map of RC-173 thru RC-188, RC-191 thru RC-200, RC-472 thru RC-475 Lode Mining Claims situated in sections 5-7 of T21N, R51E, sections 1, 2, 11, 12 of T21N, R50E, sections 30-32 of T22N, 51E MDBM, Eureka County, Nevada, Gold Bar Mining District



Locator:
Intermont Resources LLC
4911 Preston Forest Dr.
Blacksburg, Virginia 24060

Projection: Nevada State Plane Central, NAD 83
Section Lines Taken from GCDB



Claim Name
RC-173 thru RC-188, RC-191 thru RC-200
RC-472 thru RC-475

Date of Location
February 5, 2021
February 9, 2021

All location and corner monuments are 2" x 2" x 4" wooden posts with scribed metal tags.
All claims are 600' by 1,500' unless noted otherwise.