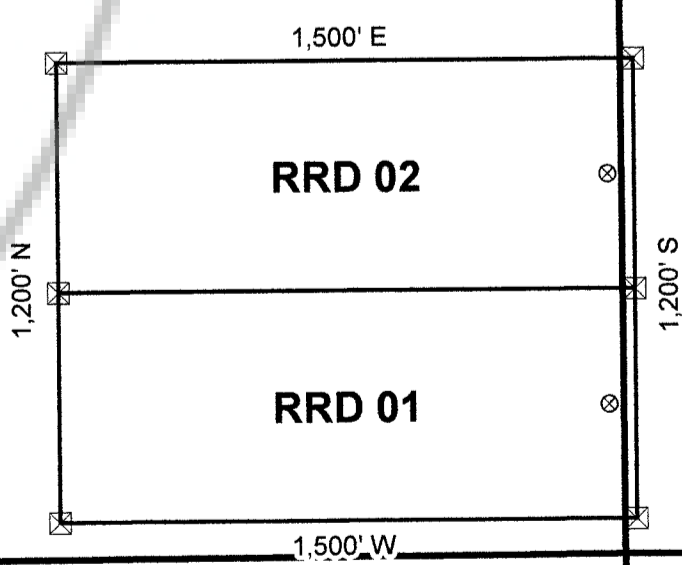
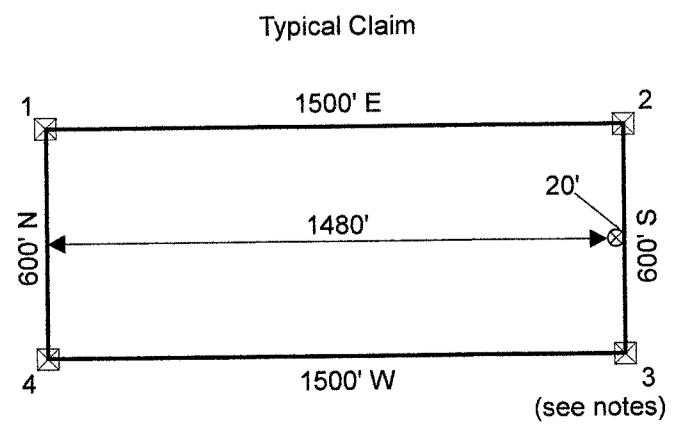


Tie Point Data:
The SW corner of RRD 21 is located 226 ft south and 570 ft west of the found NE corner of Section 28, T32N, R49E M.D.M.

T 32 N, R 49 E



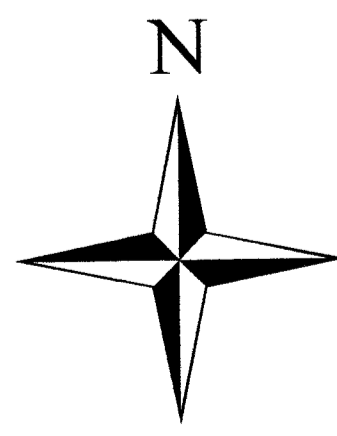
EUREKA COUNTY, NV 2021-244881
MINING MAP 08/24/2021 04:40 PM
SHEET 001 OF 001
RANGER FRONT GEOLOGICAL
001121032103448810010011
USA HOBBY, CLERK RECORDER



Location Dates:
April 3, 2021: RRD 01 - 29
April 5, 2021: RRD 30 - 39

Notes:
RRD location monuments are set 20 feet from endline along centerline of claim, unless otherwise noted.
RRD 01 and 02 LMs are 70 feet from claim endline.
All location monuments are 2"x2"x4' wooden posts with scribed metal tags.
All claims are 600' x 1500'.

Platoro West Inc.



UTM NAD83
Sections from BLM GCDB
1:6,000 1 inch = 500 feet
0 500 1,000 1,500

RRD Unpatented Lode Mining Claims

Township 32 North, Range 49 East, Sect. 15-16, 21-22, & 27-28
Mt. Diablo Base Line and Meridian
Eureka County, Nevada

Locator:
Platoro West Inc.
P O Box 2654
Durango, CO 81302

Sheet 1 of 1

Drawn by: HAW Date: 19-April-2021