

22

23

24

19

27

26

25

30

34

35

36

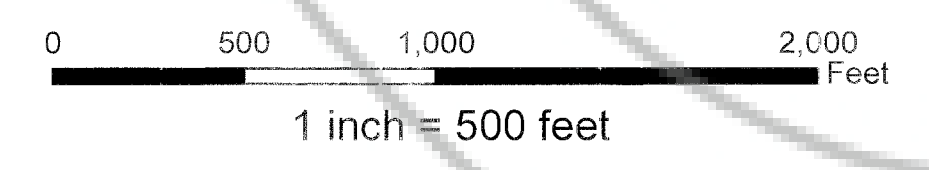
31

785 FSL, 1305 FEL
SE Corner of Section 23,
T25N, R54E, MDB&M

RANGE 54 EAST
RANGE 55 EAST

TOWNSHIP 25 NORTH

Location Monument PLSS Township
 Claims PLSS Section



Hawkstone Nevada Inc.
3500 Washington Ave., Suite 200
Houston, Texas 77007

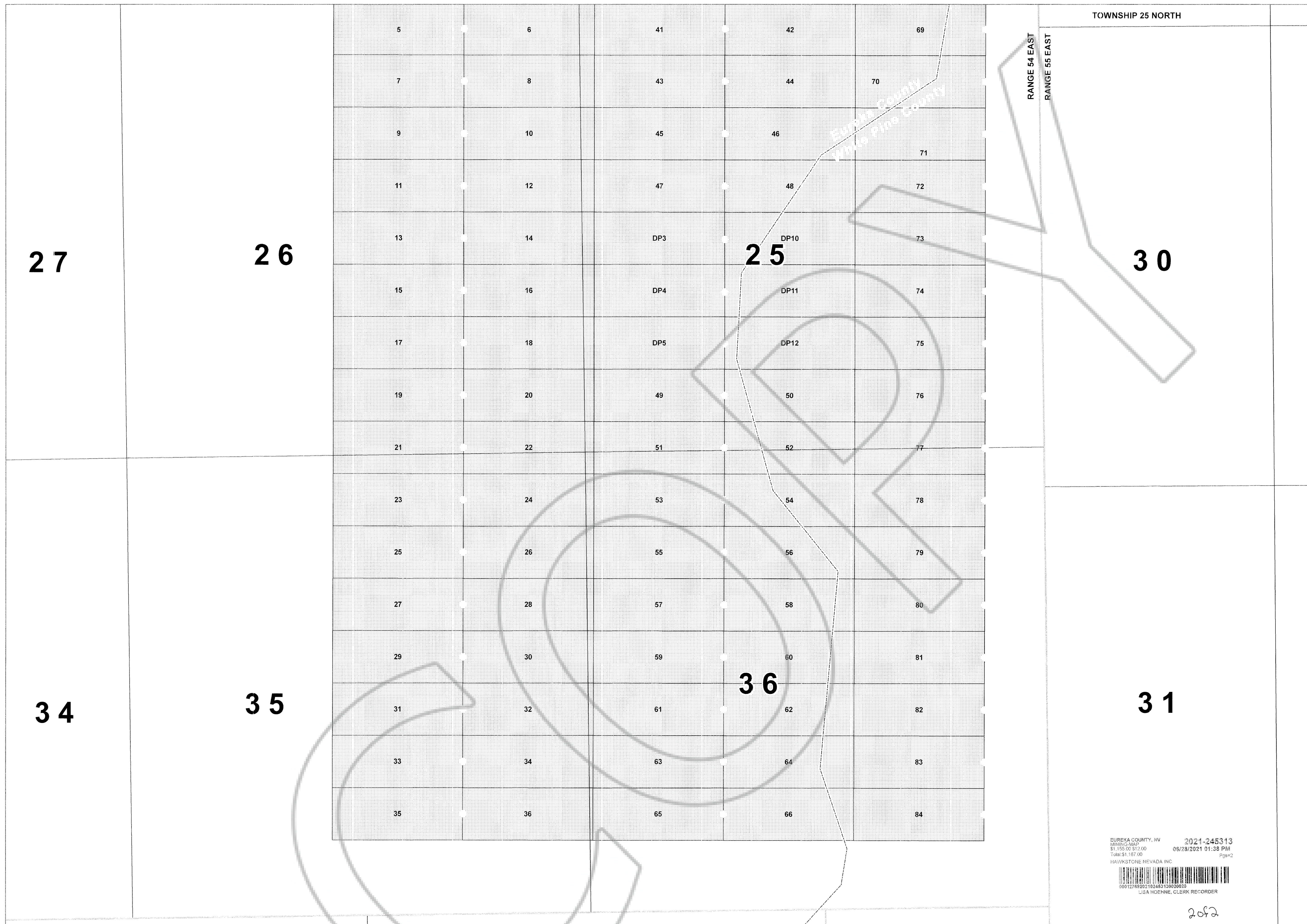
Note:
Claims are located on U.S. Surveyed lands and fit to aliquot parts.
Exceptions where whole lots are larger than 20 acres.
Where whole lots are larger than 20 acres, claims are described by meets and bounds.

EUREKA COUNTY, NV 2021-245313
 MINING CLAIM 03/29/2021 01:39 PM
 Fee: \$1,187.00
 Total: \$1,187.00
 Page: 2
 HAWKSTONE NEVADA INC.

 00012789202102453130020020
 USA. HOEHNLE, CLERK RECORDER

1 of 2

Devils Canyon and DP Lode Claims
White Pine & Eureka Counties, Nevada
 Sections 23, 24, 25, 26, 35 36 T25N R54E, MDB&M
 Map 1 of 2



TOWNSHIP 25 NORTH

RANGE 54 EAST
RANGE 55 EAST

27

26

25

30

34

35

36

31

EUREKA COUNTY, NV 2021-245313
 MINING MAP 08/28/2021 01:38 PM
 \$1,155.00 \$12.00
 Total \$1,167.00 Pgs=2
 HAWKSTONE NEVADA INC
 00012769282102453130020030
 LISA HOENNE, CLERK-RECORDER

202

Location Monument
 Claims
 PLSS Township
 PLSS Section

0 500 1,000 2,000 Feet
 1 inch = 500 feet

Hawkstone Nevada Inc.
 3500 Washington Ave., Suite 200
 Houston, Texas 77007

Note:
 Claims are located on U.S. Surveyed lands and fit to aliquot parts.
 Exceptions where whole lots are larger than 20 acres.
 Where whole lots are larger than 20 acres, claims are described by meets and bounds.

Devils Canyon & DP Lode Claims
 White Pine & Eureka Counties, Nevada
 Sections 23, 24, 25, 26, 35 36 T25N R54E, MDB&M
 Map 2 of 2