

7 Lander County
8 Eureka County

T17N R48E

18

17

BDW 20 = BDW 19

BDW 22 = BDW 21

BDW 24 = BDW 23

BDW 26 = BDW 25

BDW 28 = BDW 27

BDW 30 = BDW 29

BDW 32 = BDW 31

BDW 34 = BDW 33

BDW 36 = BDW 35

BDW 38 = BDW 37

BDW 40 = BDW 39

BDW 42 = BDW 41

BDW 44 = BDW 43

BDW 46 = BDW 45

BDW 48 = BDW 47

BDW 50 = BDW 49

BDW 90 = BDW 89

BDW 92 = BDW 91

BDW 94 = BDW 93

BDW 96 = BDW 95

BDW 98 = BDW 97

BDW 100 = BDW 99

BDW 102 = BDW 101

BDW 104 = BDW 103

BDW 106 = BDW 105

BDW 108 = BDW 107

BDW 110 = BDW 109

BDW 112 = BDW 111

BDW 114 = BDW 113

BDW 116 = BDW 115

BDW 118 = BDW 117

BDW 120 = BDW 119

BDW 168 = BDW 167

BDW 170 = BDW 169

BDW 172 = BDW 171

BDW 174 = BDW 173

BDW 176 = BDW 175

BDW 178 = BDW 177

BDW 180 = BDW 179

BDW 182 = BDW 181

BDW 184 = BDW 183

BDW 186 = BDW 185

BDW 188 = BDW 187

BDW 190 = BDW 189

BDW 192 = BDW 191

BDW 194 = BDW 193

BDW 196 = BDW 195

BDW 198 = BDW 197

BDW 260 = BDW 259

BDW 262 = BDW 261

BDW 264 = BDW 263

BDW 266 = BDW 265

BDW 268 = BDW 267

BDW 270 = BDW 269

BDW 272 = BDW 271

BDW 274 = BDW 273

BDW 276 = BDW 275

BDW 278 = BDW 277

BDW 280 = BDW 279

BDW 282 = BDW 281

BDW 284 = BDW 283

BDW 286 = BDW 285

BDW 288 = BDW 287

BDW 290 = BDW 289

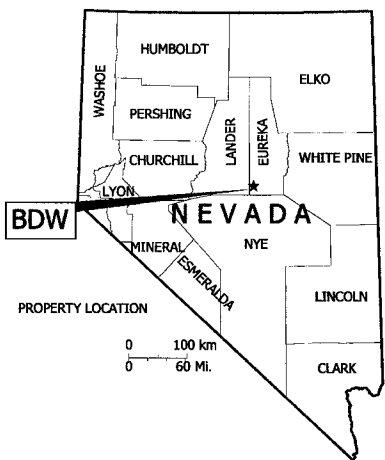
8

8

9

9

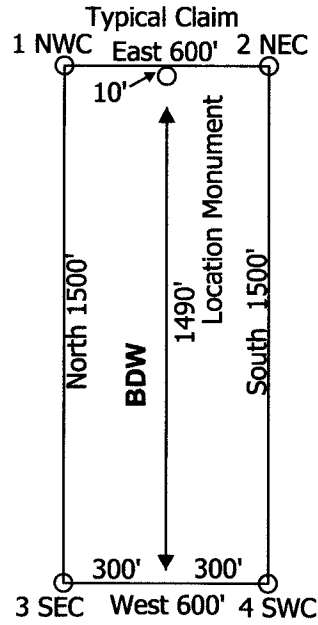
Location Dates:
 5-28-21 BDW 535-554, 627-654, 697-730
 5-29-21 BDW 519-534, 605-626, 681-696
 5-30-21 BDW 221-240, 309-344, 407-450
 5-31-21 BDW 113-148, 191-220, 259-308
 6-1-21 BDW 377-406, 487-512, 514-518, 583-604
 6-2-21 BDW 359-376, 459-486, 559-582, 655-666, 668-680
 6-3-21 BDW 19-70, 89-112, 167-190
 6-4-21 BDW 513
 6-6-21 BDW 667 in
 T16N R48E Sections 1-4 and in
 T16N R49E Sections 6, 7, & 18 and in
 T17N R48E Sections 7-10, 14-36 all in
 Lander & Eureka Counties, Nevada.
 M.D.B.&M.



Locator:
 Clear Canyon LLC
 3411 Silverside Road
 Tatnall Building Suite 104
 Wilmington, DE 19810

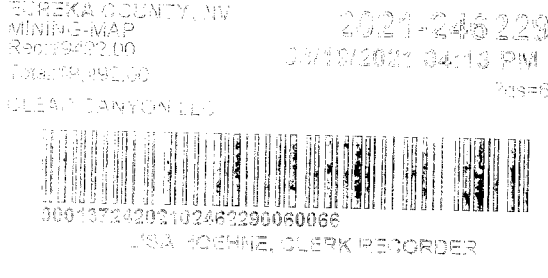
Lode Claim Location Map for
 BDW 19-70, 89-148,
 167-240, 259-344, 359-450,
 459-554, 559-730
 Eureka Sheet 1 of 6

Notes
 Location Monuments are set 10' from claim end lines unless noted otherwise. All location and corner monuments are 2" X 2" X 4' wooden posts with scribed metal tags. All claims are 600' by 1500' unless noted otherwise.



Bearings reported in UTM
 Grid North (GN), Datum, 1983
 Scale 1:6000
 1" = 500'

FEET
 BDW_1_730_Claims_N83211R.dwg
 July 26, 2021
 Drawn By: G.I.S. Land Services
 Field Work By: T&T Exploration, L.L.C.
 Datum: 1983 Projection: UTM Zone 11
 Units: Feet



Lander County
Eureka County

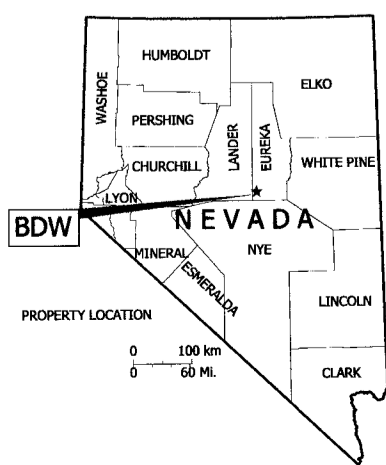
BDW 560 - BDW 559	BDW 460 - BDW 459	BDW 360 - BDW 359	BDW 1
BDW 562 - BDW 561	BDW 462 - BDW 461	BDW 362 - BDW 361	BDW 2
BDW 564 - BDW 563	BDW 464 - BDW 463	BDW 364 - BDW 363	BDW 3
BDW 566 - BDW 565	BDW 466 - BDW 465	BDW 366 - BDW 365	BDW 4
BDW 568 - BDW 567	BDW 468 - BDW 467	BDW 368 - BDW 367	BDW 5
BDW 570 - BDW 569	BDW 470 - BDW 469	BDW 370 - BDW 369	BDW 6
BDW 572 - BDW 571	BDW 472 - BDW 471	BDW 372 - BDW 371	BDW 7
BDW 574 - BDW 573	BDW 474 - BDW 473	BDW 374 - BDW 373	BDW 8
BDW 576 - BDW 575	BDW 476 - BDW 475	BDW 376 - BDW 375	BDW 9
BDW 578 - BDW 577	BDW 478 - BDW 477	BDW 378 - BDW 377	BDW 10
BDW 580 - BDW 579	BDW 480 - BDW 479	BDW 380 - BDW 379	BDW 11
BDW 582 - BDW 581	BDW 482 - BDW 481	BDW 382 - BDW 381	BDW 12
BDW 584 - BDW 583	BDW 484 - BDW 483	BDW 384 - BDW 383	BDW 13
BDW 586 - BDW 585	BDW 486 - BDW 485	BDW 386 - BDW 385	BDW 14
BDW 588 - BDW 587	BDW 488 - BDW 487	BDW 388 - BDW 387	BDW 15
BDW 590 - BDW 589	BDW 490 - BDW 489	BDW 390 - BDW 389	BDW 16

BDW 655
BDW 657
BDW 659
BDW 661
BDW 663
BDW 665

T16N R48E

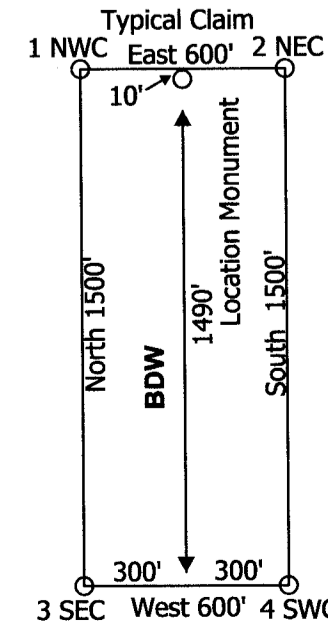
Location Dates:
 5-28-21 BDW 535-554, 627-654, 697-730
 5-29-21 BDW 519-534, 605-626, 681-696
 5-30-21 BDW 221-240, 309-344, 407-450
 5-31-21 BDW 113-148, 191-220, 259-308
 6-1-21 BDW 377-406, 487-512, 514-518, 583-604
 6-2-21 BDW 359-376, 459-486, 559-582, 655-666, 668-680
 6-3-21 BDW 19-70, 89-112, 167-190
 6-4-21 BDW 513
 6-6-21 BDW 667 in
 T16N R48E Sections 1-4 and in
 T16N R49E Sections 6, 7, & 18 and in
 T17N R48E Sections 7-10, 14-36 all in
 Lander & Eureka Counties, Nevada.
 M.D.B.&M.

Locator:
 Clear Canyon LLC
 3411 Silverside Road
 Tatnall Building Suite 104
 Wilmington, DE 19810



Lode Claim Location Map for
 BDW 19-70, 89-148,
 167-240, 259-344, 359-450,
 459-554, 559-730
 Eureka Sheet 2 of 6

Notes
 Location Monuments are set 10' from claim end lines unless noted otherwise. All location and corner monuments are 2" X 2" X 4" wooden posts with scribed metal tags. All claims are 600' by 1500' unless noted otherwise.



Bearings reported in UTM
 Grid North (GN), Datum, 1983
 Scale 1:6000
 1" = 500'

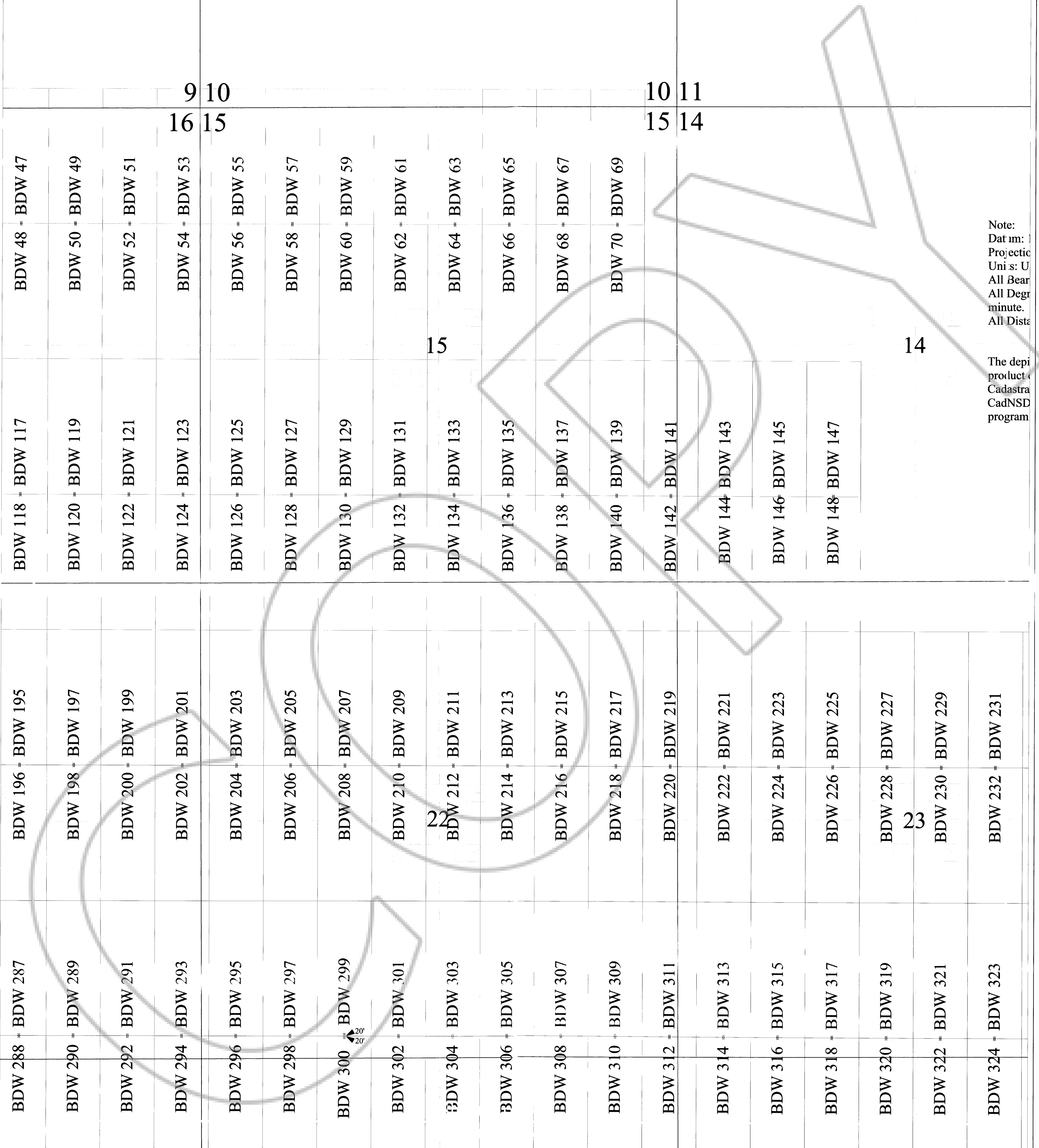
FEET

BDW_1_730_Claims_N83211ft.dwg
 July 26, 2021
 Drawn By: G.I.S. Land Services
 Field Work By: T&T Exploration, L.L.C.
 Datum: 1983 Projection: UTM Zone 11
 Units: Feet

ELREKA COUNTY, NV 2021-246229
 MINING MAP 08/19/2021 04:13 PM
 \$0.480.00 \$12.00
 Total \$9.462.00
 CLEAR CANYON LLC
 9001573420210246229060006
 LISA HOEHN, CLERK RECORDER

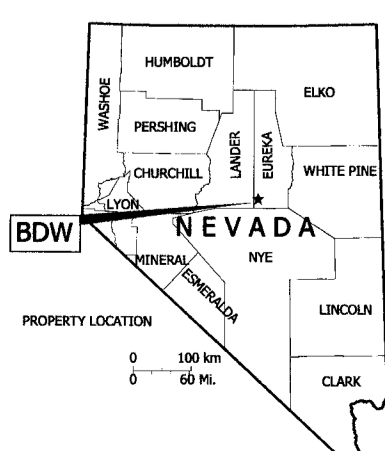
N R48E

T17N R



Note:
 Datum: 1983
 Projection: UTM
 Units: Feet
 All Bearings: to nearest minute
 All Distances: to nearest 0.1 feet
 The depicted product is a digital representation of the Cadastral CadNSD program

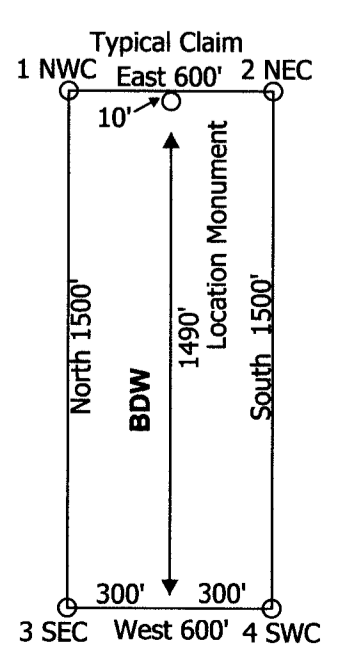
Location Dates:
 5-28-21 BDW 535-554, 627-654, 697-730
 5-29-21 BDW 519-534, 605-626, 681-696
 5-30-21 BDW 221-240, 309-344, 407-450
 5-31-21 BDW 113-148, 191-220, 259-308
 6-1-21 BDW 377-406, 487-512, 514-518, 583-604
 6-2-21 BDW 359-376, 459-486, 559-582, 655-666, 668-680
 6-3-21 BDW 19-70, 89-112, 167-190
 6-4-21 BDW 513
 6-6-21 BDW 667 in
 T16N R48E Sections 1-4 and in
 T16N R49E Sections 6, 7, & 18 and in
 T17N R48E Sections 7-10, 14-36 all in
 Lander & Eureka Counties, Nevada.
 M.D.B.&M.



Locator:
 Clear Canyon LLC
 3411 Silverside Road
 Tatnall Building Suite 104
 Wilmington, DE 19810

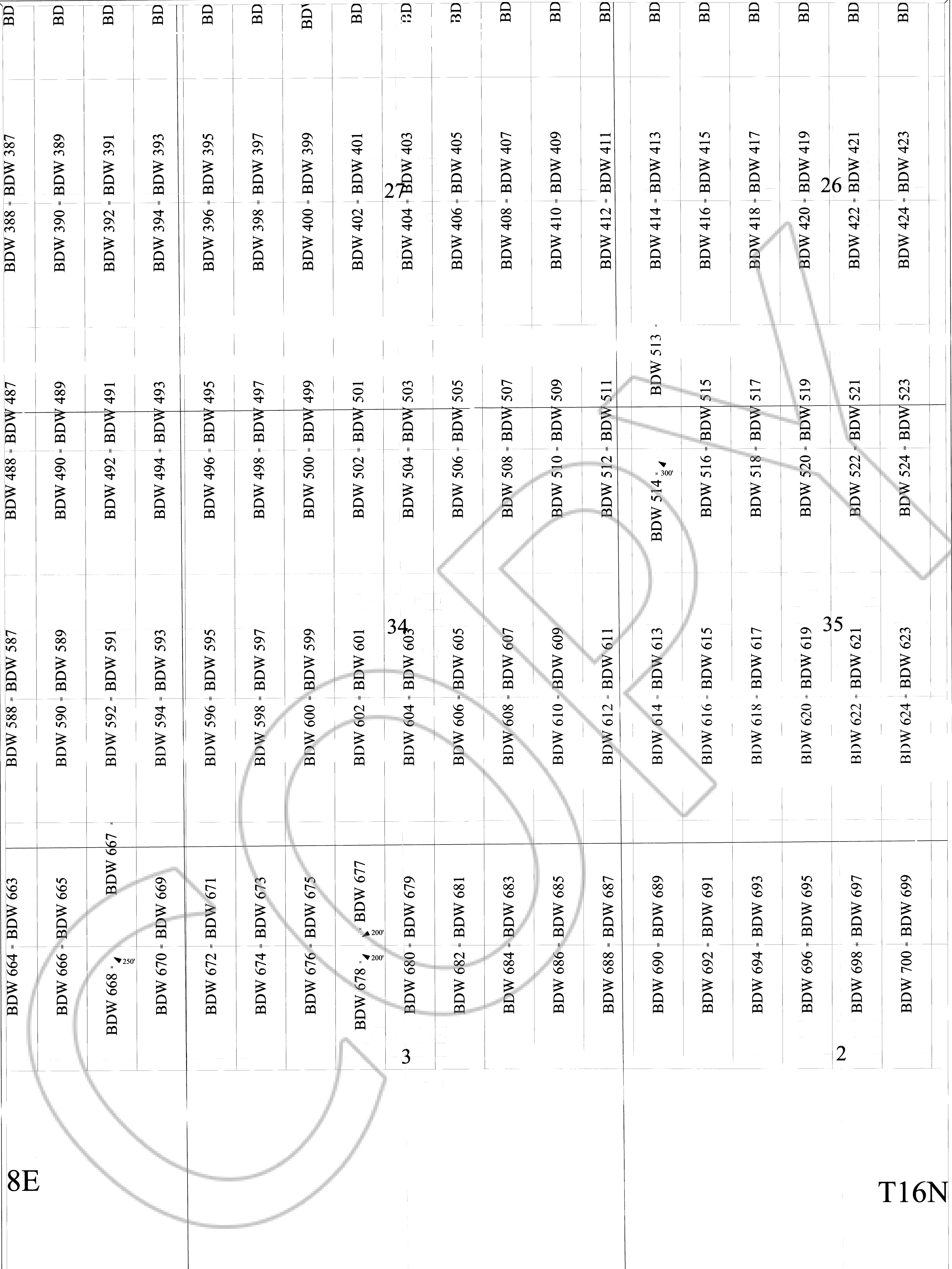
**Lode Claim Location Map for
 BDW 19-70, 89-148,
 167-240, 259-344, 359-450,
 459-554, 559-730
 Eureka Sheet 3 of 6**

Notes
 Location Monuments are set 10' from claim end lines unless noted otherwise. All location and corner monuments are 2" X 2" X 4" wooden posts with scribed metal tags. All claims are 600' by 1500' unless noted otherwise.

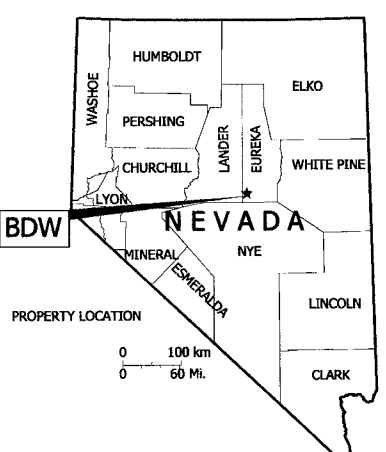


Bearings reported in UTM
 Grid North (GN), Datum, 1983
 Scale 1:6000
 1" = 500'
 FEET
 BDW_1_730_Claims_N83211ft.dwg
 July 26, 2021
 Drawn By: G.I.S. Land Services
 Field Work By: T&T Exploration, L.L.C.
 Datum: 1983 Projection: UTM Zone 11
 Units: Feet

EUREKA COUNTY, NV
 2021-246229
 08/19/2021 04:13 PM
 CLEAR CANYON LLC
 CLERK RECORDER



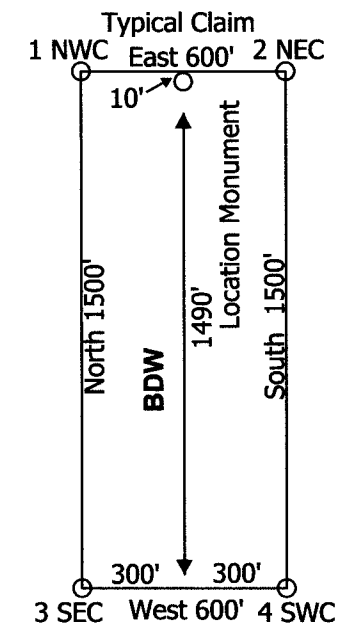
Location Dates:
 5-28-21 BDW 535-554, 627-654, 697-730
 5-29-21 BDW 519-534, 605-626, 681-696
 5-30-21 BDW 221-240, 309-344, 407-450
 5-31-21 BDW 113-148, 191-220, 259-308
 6-1-21 BDW 377-406, 487-512, 514-518, 583-604
 6-2-21 BDW 359-376, 459-486, 559-582, 655-666, 668-680
 6-3-21 BDW 19-70, 89-112, 167-190
 6-4-21 BDW 513
 6-6-21 BDW 667 in
 T16N R48E Sections 1-4 and in
 T16N R49E Sections 6, 7, & 18 and in
 T17N R48E Sections 7-10, 14-36 all in
 Lander & Eureka Counties, Nevada.
 M.D.B.&M.



Locator:
 Clear Canyon LLC
 3411 Silverside Road
 Tatnall Building Suite 104
 Wilmington, DE 19810

Lode Claim Location Map for BDW 19-70, 89-148, 167-240, 259-344, 359-450, 459-554, 559-730 Eureka Sheet 4 of 6

Notes
 Location Monuments are set 10' from claim end lines unless noted otherwise. All location and corner monuments are 2" X 2" X 4' wooden posts with scribed metal tags. All claims are 600' by 1500' unless noted otherwise.



Bearings reported in UTM
 Grid North (GN), Datum, 1983
 Scale 1:6000
 1" = 500'

FEET
 0 1500'

BDW_1730_Claims_N83211ft.dwg
 July 26, 2021
 Drawn By: G.I.S. Land Services
 Field Work By: T&T Exploration, L.L.C.
 Datum: 1983 Projection: UTM Zone 11
 Units: Feet

SUREKA COUNTY, NV
 MINING CLAIM
 50,490,000 512,000
 TAX 50,492,000
 CLEAR CANYON LLC
 2021-246229
 08/19/2021 04:13 PM
 P.35/6
 SA HOEHNLE, CLERK RECORDER

T17N R48E

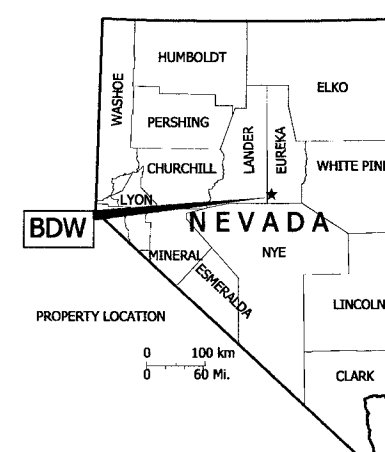
Note:
 Datum: 1983
 Projection: UTM
 Units: US Survey Feet
 All Bearings are reported in UTM Grid North.
 All Degrees and Minutes are reported to the nearest minute.
 All Distances are reported in feet to the nearest foot.

The depicted Township, Range and Sections are a product of the Bureau of Land Management, Cadastral Survey. Commonly known as the PLSS, CadNSDI that originates from the BLM GCDB program.

BDW 230 = BDW 229	BDW 232 = BDW 231	BDW 234 = BDW 233	BDW 236 = BDW 235	BDW 238 = BDW 237	BDW 240 = BDW 239						
BDW 322 = BDW 321	BDW 324 = BDW 323	BDW 326 = BDW 325	BDW 328 = BDW 327	BDW 330 = BDW 329	BDW 332 = BDW 331	BDW 334 = BDW 333	BDW 336 = BDW 335	BDW 338 = BDW 337	BDW 340 = BDW 339	BDW 342 = BDW 341	BDW 344 = BDW 343

T17N R49E
 T16N R49E

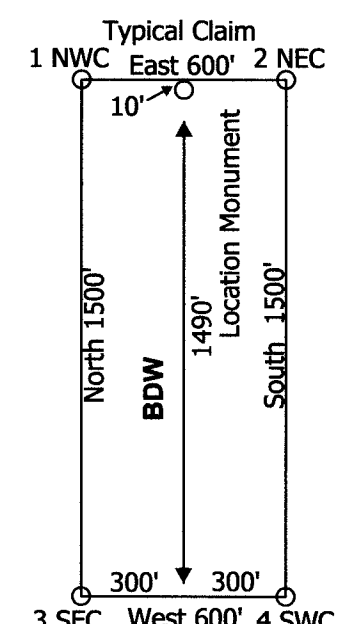
Location Dates:
 5-28-21 BDW 535-554, 627-654, 697-730
 5-29-21 BDW 519-534, 605-626, 681-696
 5-30-21 BDW 221-240, 309-344, 407-450
 5-31-21 BDW 113-148, 191-220, 259-308
 6-1-21 BDW 377-406, 487-512, 514-518, 583-604
 6-2-21 BDW 359-376, 459-486, 559-582, 655-666, 668-680
 6-3-21 BDW 19-70, 89-112, 167-190
 6-4-21 BDW 513
 6-6-21 BDW 667 in
 T16N R48E Sections 1-4 and in
 T16N R49E Sections 6, 7, & 18 and in
 T17N R48E Sections 7-10, 14-36 all in
 Lander & Eureka Counties, Nevada.
 M.D.B.&M.



Locator:
 Clear Canyon LLC
 3411 Silver Side Road
 Tatnall Building Suite 104
 Wilmington, DE 19810

Lode Claim Location Map for
 BDW 19-70, 89-148,
 167-240, 259-344, 359-450,
 459-554, 559-730
 Eureka Sheet 5 of 6

Notes
 Location Monuments are set 10' from claim end lines unless noted otherwise. All location and corner monuments are 2" X 2" X 4' wooden posts with scribed metal tags. All claims are 600' by 1500' unless noted otherwise.

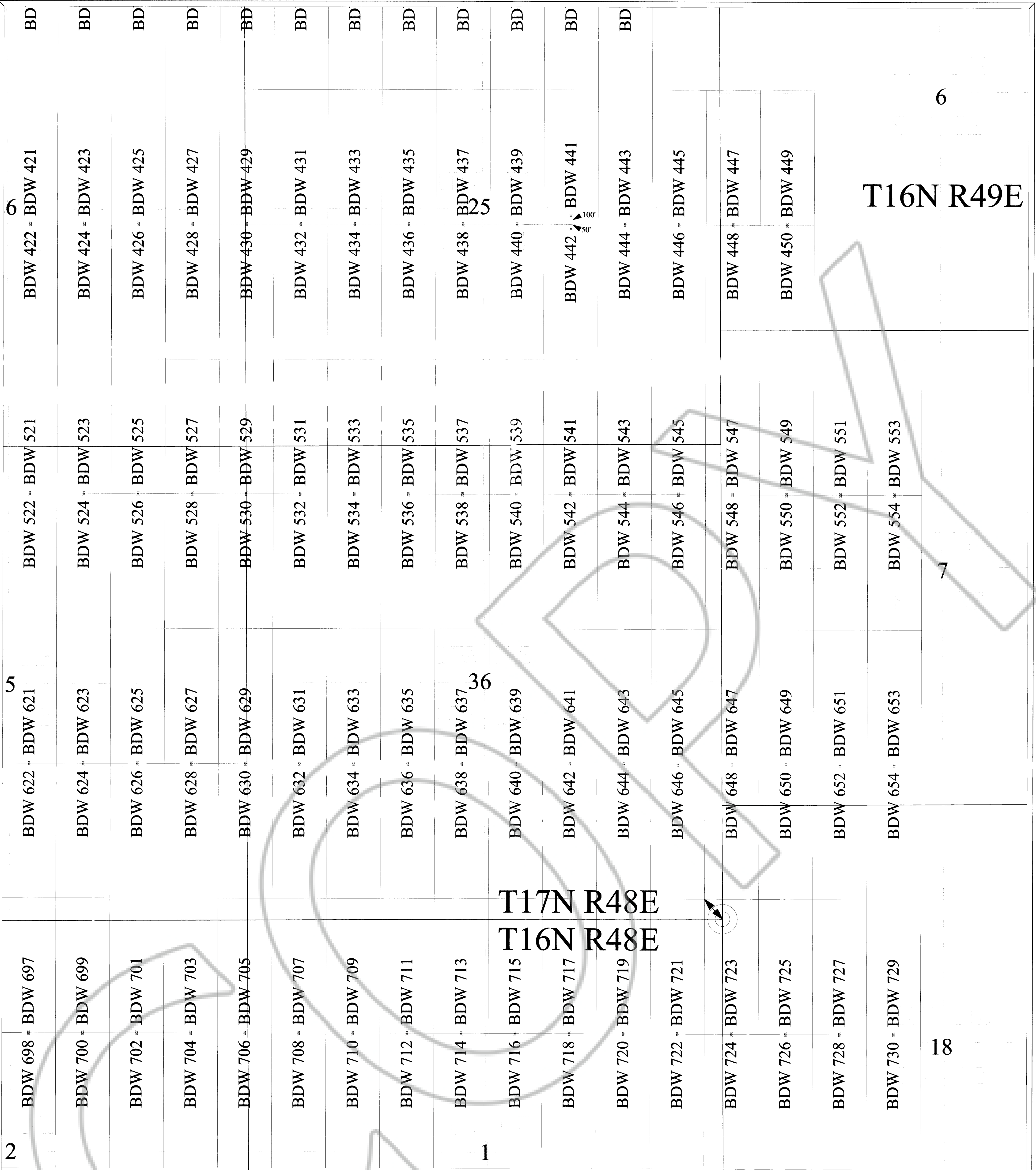


Bearings reported in UTM Grid North (GN), Datum, 1983
 Scale 1:6000
 1" = 500'

FEET

BDW_1_730_Claims_N83211ft.dwg
 July 26, 2021
 Drawn By: G.I.S. Land Services
 Field Work By: T&T Exploration, L.L.C.
 Datum: 1983 Projection: UTM Zone 11
 Units: Feet

EUREKA COUNTY, NV 2021-246229
 MAPPING MAP 08/19/2021 04:13 PM
 T&T EXPLO 00
 CLEAR CANYON LLC
 90013724202102482390600956
 LISA HOEHN, CLERK RECORDER



T16N R48E

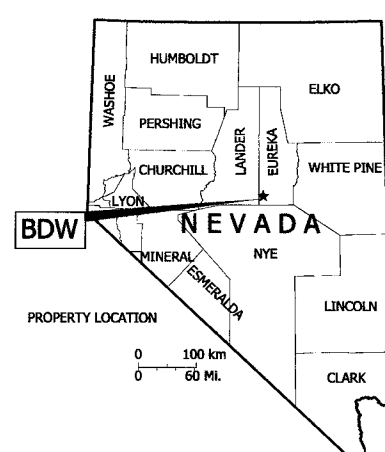
T17N R48E
T16N R48E

T16N R49E

The Common Corner of BDW 646, 648, 721, 723 bears N42°33'W and is 294' from the SE corner of Section 36 T17N R48E.

T16N R48E
T16N R49E

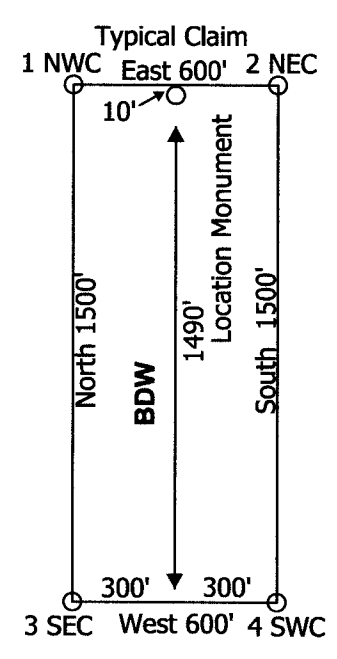
Location Dates:
 5-28-21 BDW 535-554, 627-654, 697-730
 5-29-21 BDW 519-534, 605-626, 681-696
 5-30-21 BDW 221-240, 309-344, 407-450
 5-31-21 BDW 113-148, 191-220, 259-308
 6-1-21 BDW 377-406, 487-512, 514-518, 583-604
 6-2-21 BDW 359-376, 459-486, 559-582, 655-666, 668-680
 6-3-21 BDW 19-70, 89-112, 167-190
 6-4-21 BDW 513
 6-6-21 BDW 667 in
 T16N R48E Sections 1-4 and in
 T16N R49E Sections 6, 7, & 18 and in
 T17N R48E Sections 7-10, 14-36 all in
 Lander & Eureka Counties, Nevada.
 M.D.B.&M.



Locator:
 Clear Canyon LLC
 3411 Silverdale Road
 Tattall Building Suite 104
 Wilmington, DE 19810

Lode Claim Location Map for
 BDW 19-70, 89-148,
 167-240, 259-344, 359-450,
 459-554, 559-730
 Eureka Sheet 6 of 6

Notes
 Location Monuments are set 10' from claim end lines unless noted otherwise. All location and corner monuments are 2" X 2" X 4' wooden posts with scribed metal tags. All claims are 600' by 1500' unless noted otherwise.



Bearings reported in UTM
 Grid North (GN), Datum, 1983
 Scale 1:6000
 1" = 500'

FEET
 BDW_1_730_Claims_N83Z11ft.dwg
 July 26, 2021
 Drawn By: G.I.S. Land Services
 Field Work By: T&T Exploration, L.L.C.
 Datum: 1983 Projection: UTM Zone 11
 Units: Feet

EUREKA COUNTY, NV
 RECORDED
 2021-246229
 08/19/2021 04:13 PM
 CLEAR CANYON LLC
 LISA MOEHME, CLERK RECORDER

