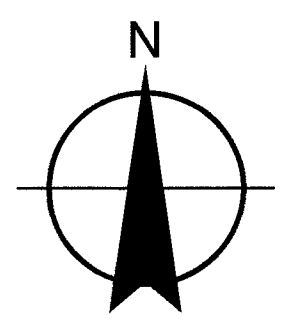


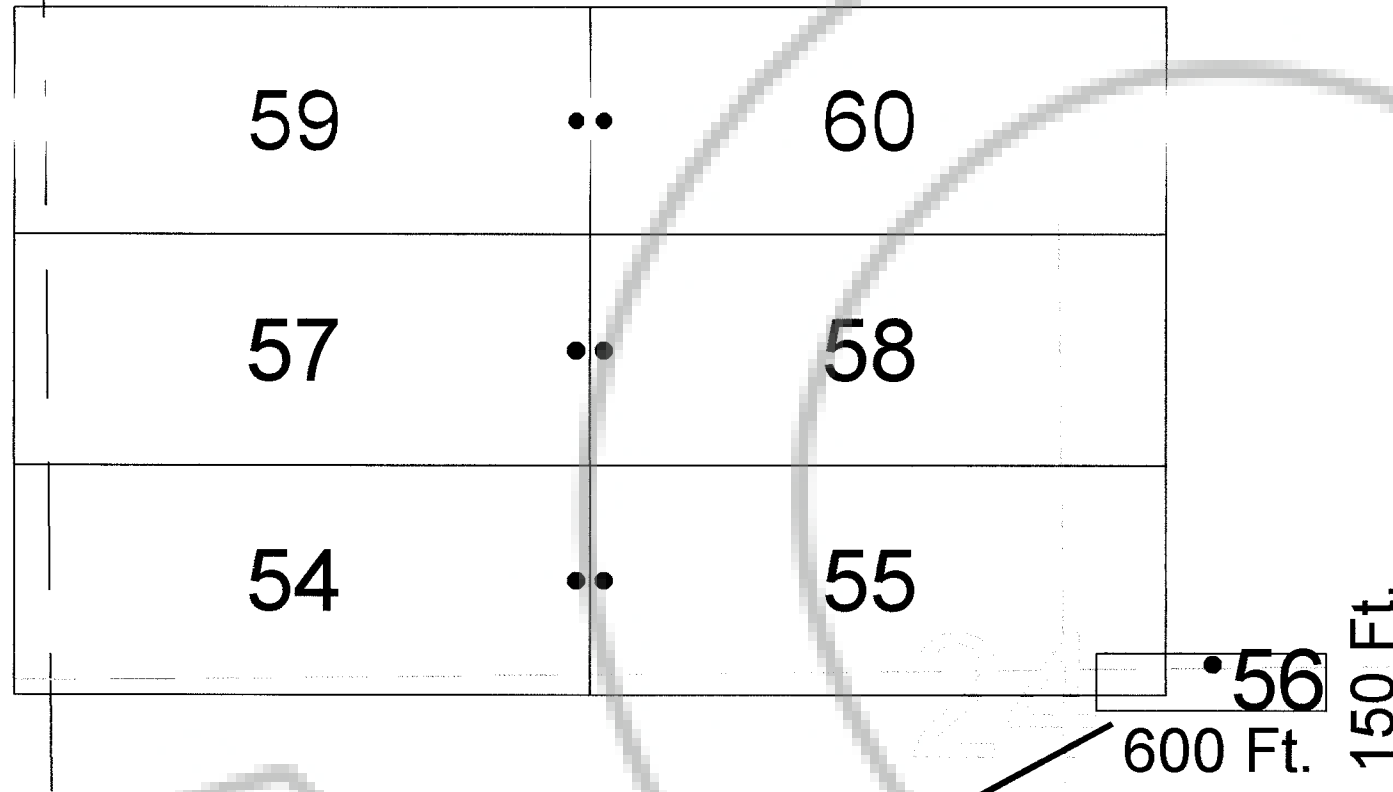
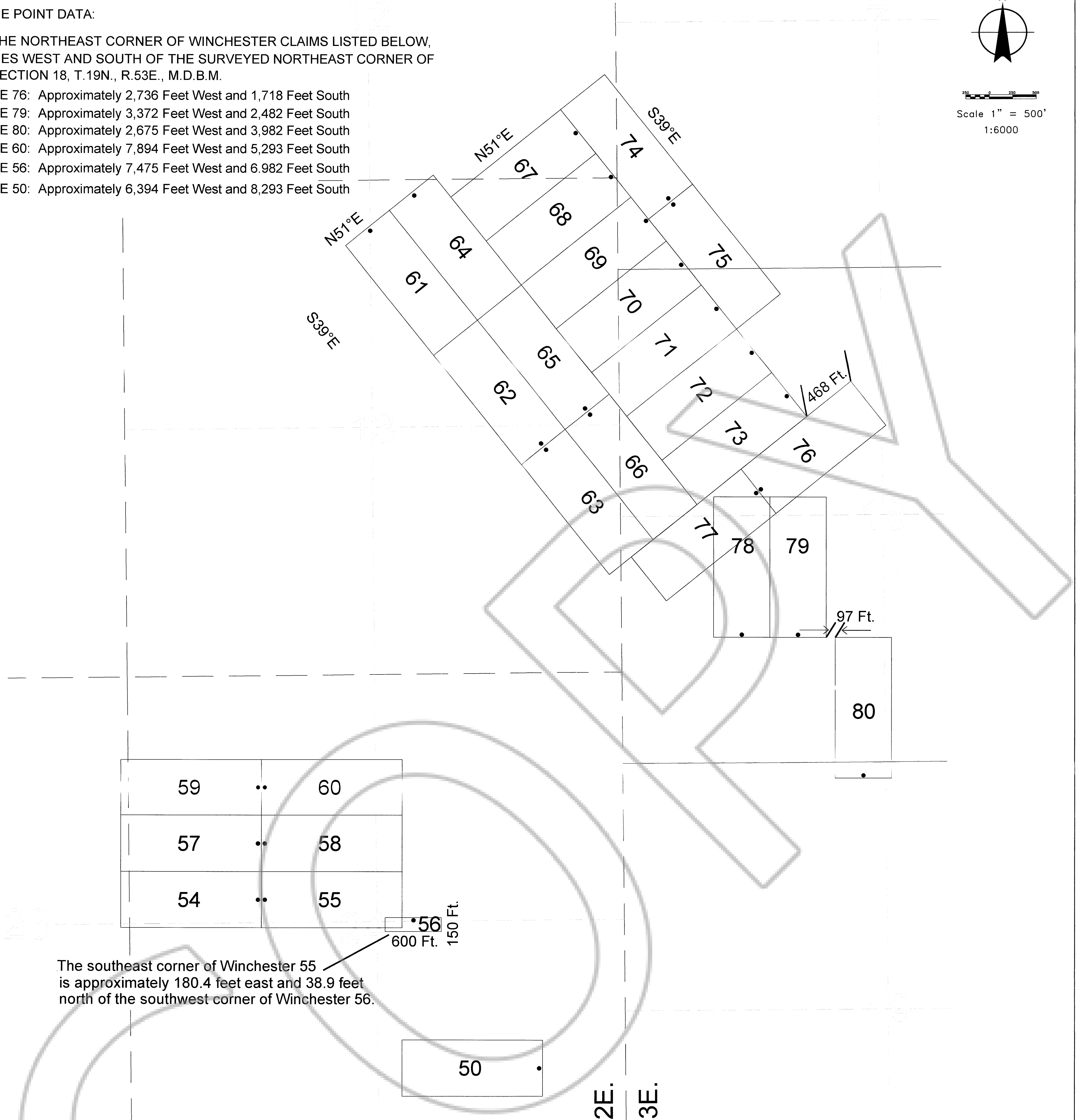
TIE POINT DATA:

THE NORTHEAST CORNER OF WINCHESTER CLAIMS LISTED BELOW, LIES WEST AND SOUTH OF THE SURVEYED NORTHEAST CORNER OF SECTION 18, T.19N., R.53E., M.D.B.M.

- NE 76: Approximately 2,736 Feet West and 1,718 Feet South
- NE 79: Approximately 3,372 Feet West and 2,482 Feet South
- NE 80: Approximately 2,675 Feet West and 3,982 Feet South
- NE 60: Approximately 7,894 Feet West and 5,293 Feet South
- NE 56: Approximately 7,475 Feet West and 6.982 Feet South
- NE 50: Approximately 6,394 Feet West and 8,293 Feet South



Scale 1" = 500'  
1:6000

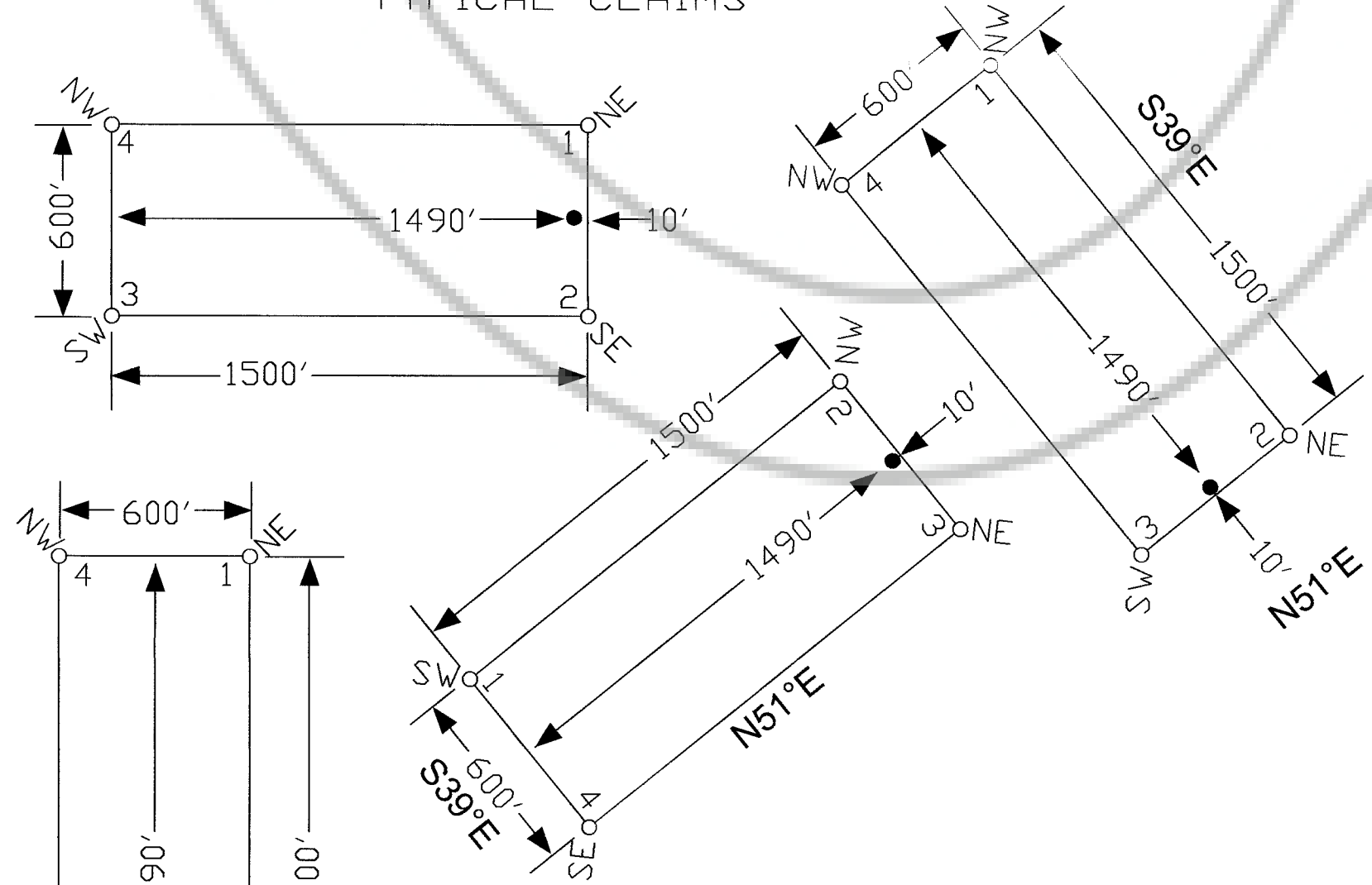


The southeast corner of Winchester 55 is approximately 180.4 feet east and 38.9 feet north of the southwest corner of Winchester 56.

T.19N., R.52E.  
T.19N., R.53E.

LOCATION DATES:  
July 6, 2021: Winchester 50,54-55,57-66  
July 12, 2021: Winchester 67-80  
July 13, 2021: Winchester 56,71-80  
(28 Total Claims)

TYPICAL CLAIMS



NOTES:  
LOCATION MONUMENTS SET 10' FROM CLAIM END CENTERLINES. ALL LOCATION MONUMENTS AND CLAIM POSTS ARE 2"x2"x4' WOODEN STAKES.  
DASHED SECTION LINES INDICATE PROJECTED SECTIONS.

EUREKA COUNTY, NV 2021-246416  
MINING MAP 09/30/2021 02:21 PM  
Title \$432.00 Page 1  
MERCURY EXPLORATION NEVADA  
ACAD FILE NAME  
PLOT SCALE  
1" = 500'  
LISA HOENNE, CLERK RECORDER

Locator:  
Mercury Exploration Nevada Inc.  
109 Schiller Bay NW, Calgary, Alberta T3L 1J9  
Winchester 50,54-80 Lode Claims  
T.19N.,R.52&53E.; Eureka County, Nevada  
DATE: September 2021  
DRAWN BY: lms  
PLOT SCALE: 1" = 500'

369 - 5th STREET  
PH: (775) 778-0668 ELKO, NV 89801 FAX: (775) 778-0687