

30

29

NW Corner of GC79  
is 18,769' at 151.259  
degrees from NW corner  
of Sec 13, T24N, R50E

T24N R51E  
T24N R50E

31

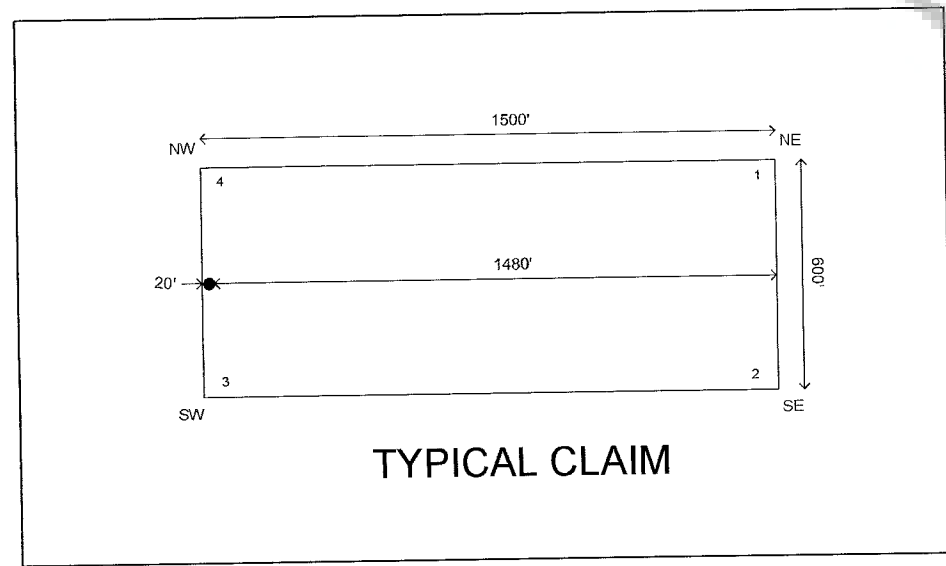
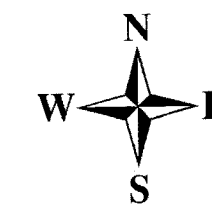
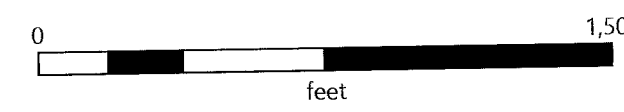
32

T24N R51E  
T23N R51E

Notes: Location monuments are set on claim centerlines  
20' from endlines except where shown otherwise. All location  
monuments and corner posts are 2"x2"x4' wood posts with  
scribed metal tags.

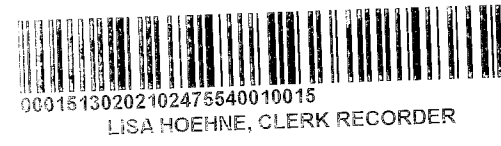
Location Dates:  
GC 80-103 were located 11/3/21  
GC 79, and 104-111 were located 11/7/21

Located by:  
Objective Exploration LLC  
251 Holyoke Drive  
Spring Creek, NV 89815



TYPICAL CLAIM

EUREKA COUNTY, NV 2021-247554  
MINING MAP 12/13/2021 10:26 AM  
Pkg: SCOTT.PRI Total: \$507.00 Page: 1  
SCOTT PRICE



LISA NOEHNE, CLERK RECORDER

Location Map for GC 79 to GC 111 Lode Claims  
Section 31 and 32, T24N, R51E, and  
Section 4 and 5, T23N, R51E  
Eureka County, Nevada

05

04