

31

32

33

34

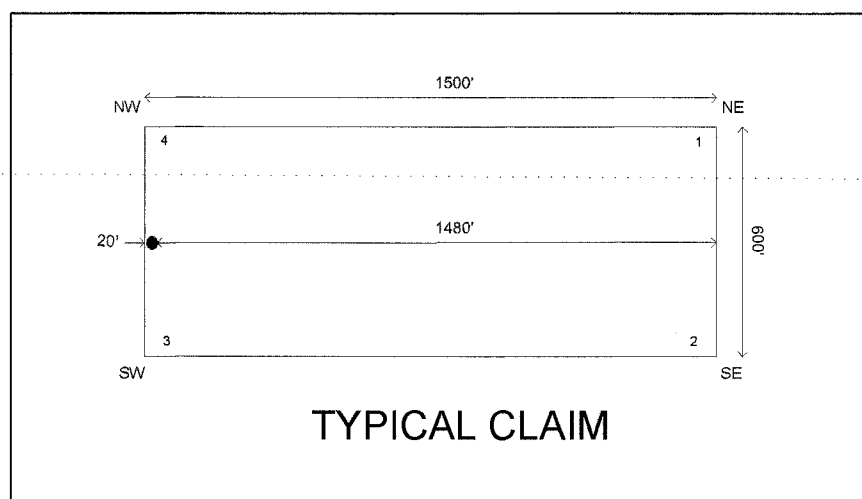
T24N, R51E
T23N, R51E

05

04

03

02



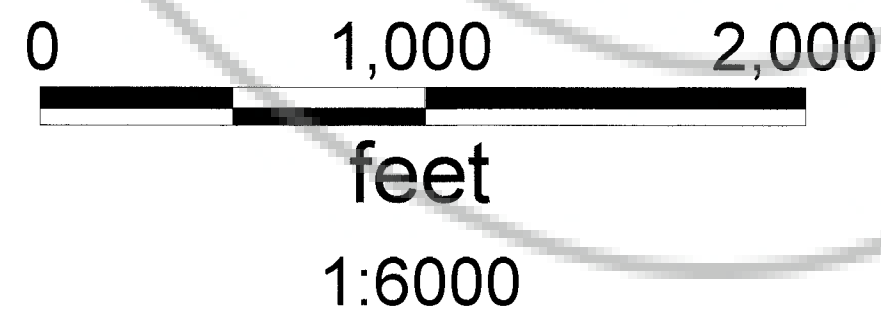
Notes: Location monuments are set on claim centerlines 20' from endlines. All location monuments and corner posts are 2"x2"x4' wood posts.

Tie point information:
NE corner of AG10
lies 6564 feet at
284.884 degrees from
SW corner of section
6, T23N, R52E

Location Dates:
AG 51-67 were located on 10/28/21
AG 73-96 were located on 10/29/21
AG 126-128 were located on 10/30/21
AG 68-72, 115, 116, and 123-125 were located on 10/31/21
AG 97-114 were located on 11/1/21
AG 1-11, 13, 15, 17, and 117-122 were located on 11/6/21

Located by:
Objective Exploration LLC
251 Holyoke Drive
Spring Creek, NV 89815

EUREKA COUNTY, NV 2021-247947
RECORDING MAP 12/13/2021 11:05 AM
Total \$1,382.00 Pgs:1
SCOTT PRICE
LISA HOERNE, CLERK, RECORDER



Location Map of the AG 1-11, 13, 15, 17, and 51-128 Lode Claims
Sections 2, 3, 4, 5, T23N, R51E, and Sections 31, 32, T24N, R51E,
Eureka County, Nevada

