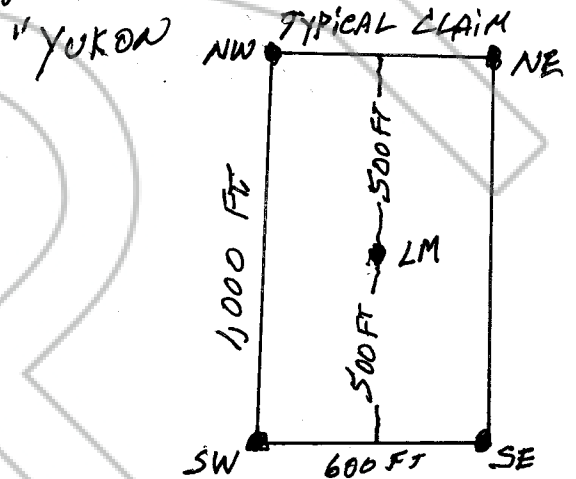


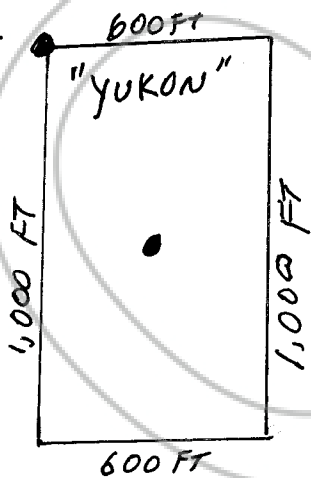
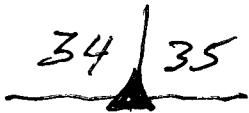


TIE POINT DATA: THE N.W. CORNER OF THE  
"YUKON" CLAIM LIES 2,064 FEET EAST AND  
4,071 FEET SOUTH FROM  
THE FOUND G.L.D. CADASTRAL  
MONUMENT THAT IS THE COMMON  
CORNER FOR SECTIONS 34 AND 35  
T19N, R53E, M.D.B.M.

LODE CLAIM  
LOCATION DATE  
SEPTEMBER 19, 2022



SCALE  
0' 1" = 500 FT 500'



LOCATOR

TIMBERLINE RESOURCES CORPORATION  
101 EAST LAKESIDE  
COEUR D'ALENE, IDAHO 83814

AGENT

DONALD JAMES McDOWELL  
CALIFORNIA L.S. 6473

THE "YUKON" CLAIM LIES APPROX. NORTH-SOUTH

NOTES: LOCATION MONUMENT IS SET 500 FEET  
FROM THE CLAIM END CENTERLINE. ALL  
LOCATION MONUMENTS AND CLAIM POSTS ARE  
2" x 2" x 4' WOODEN POSTS, MARKED WITH  
SCRIBED METAL TAGS.