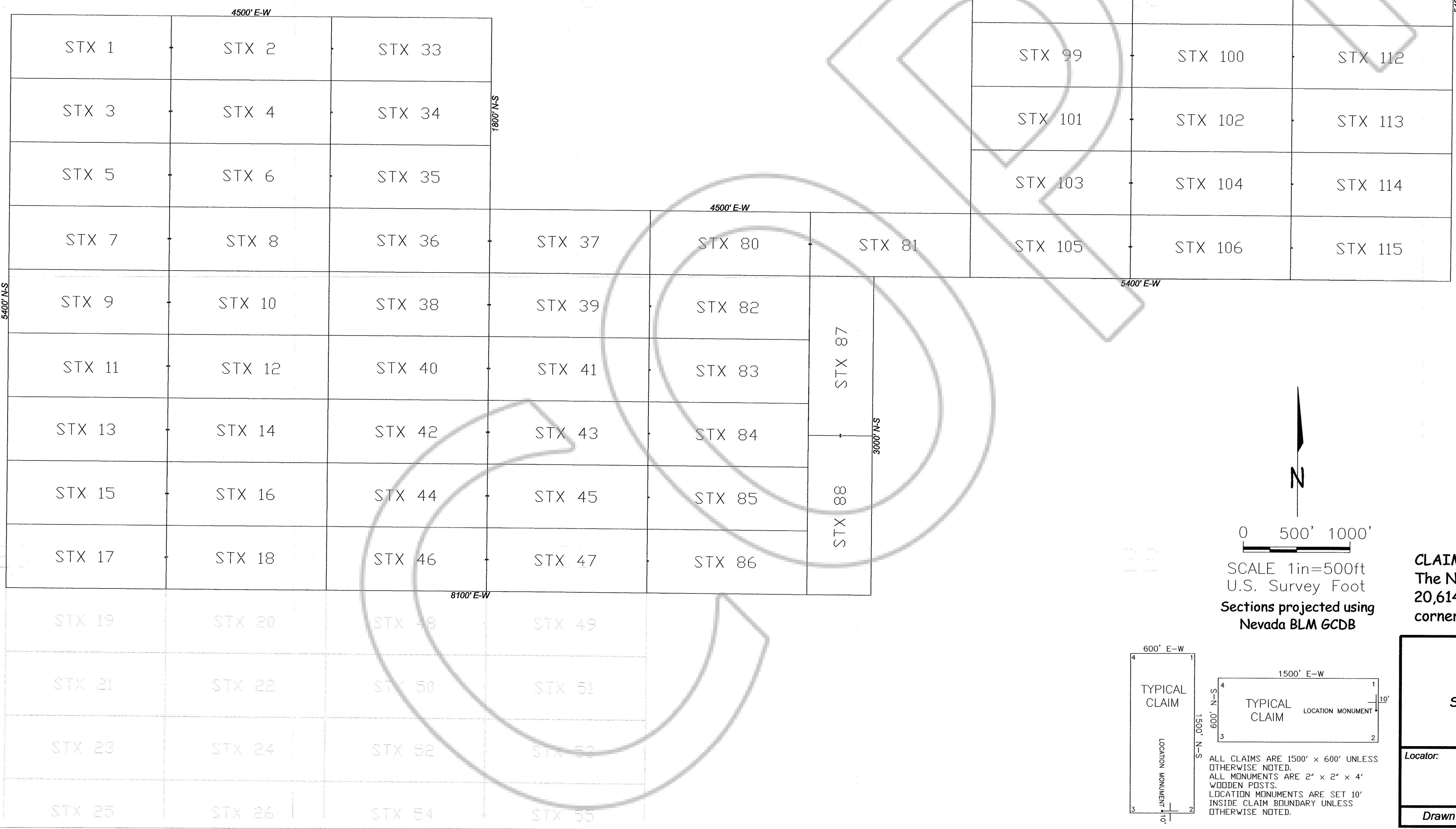
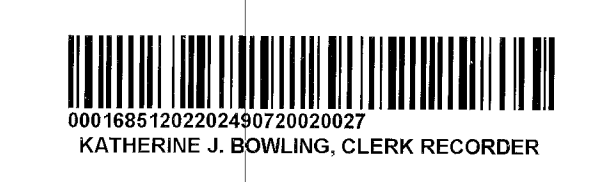


NW corner of STX 89 is at approximately 4453551N 547495E (UTM NAD83 zone 11 meters)

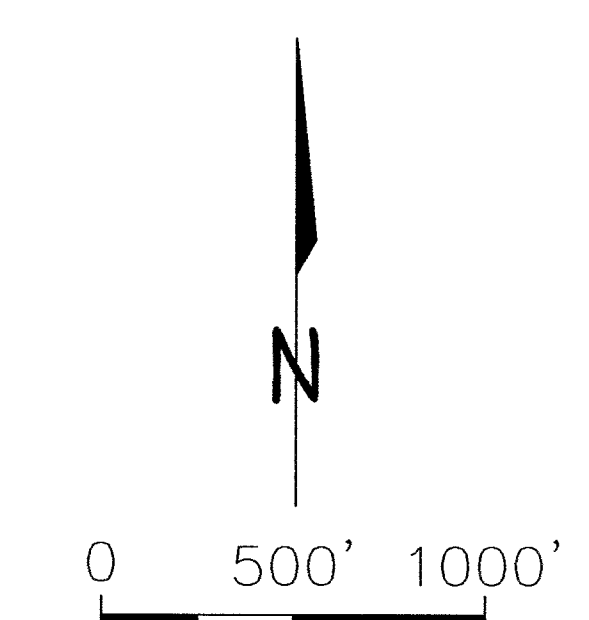


EUREKA COUNTY, NV
 MINING CLAIM
 Rec: \$1767.00
 Total: \$1,767.00
 NEVADA GOLD MINES LLC

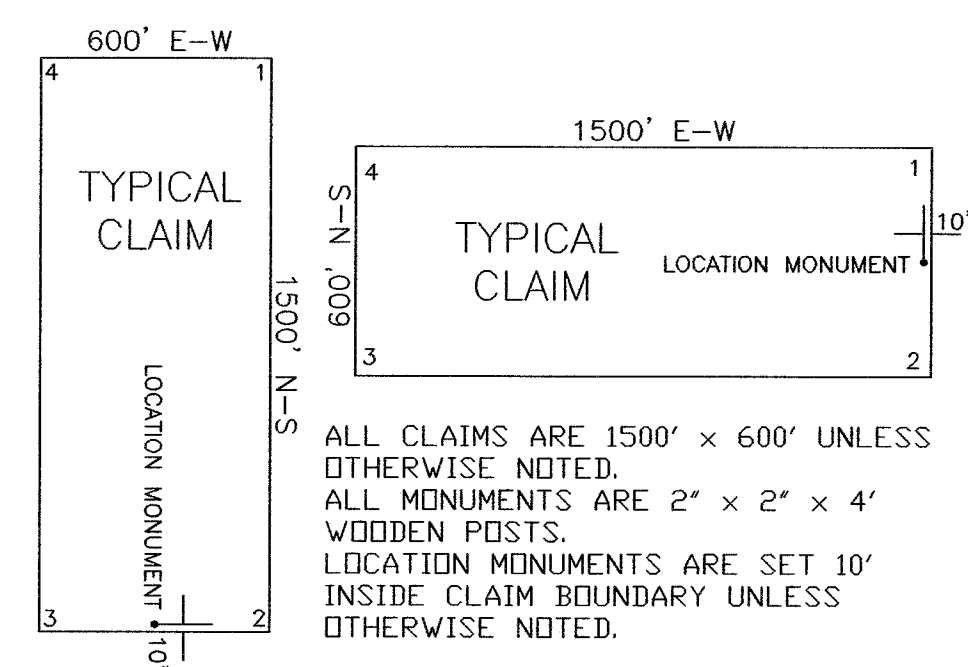
2022-249072
 11/30/2022 08:18 AM
 Pgs: 2



CLAIM LOCATION DATES:
 September 9, 2022: STX 1-59
 September 10, 2022: STX 60-116
 October 20, 2022: STX 129

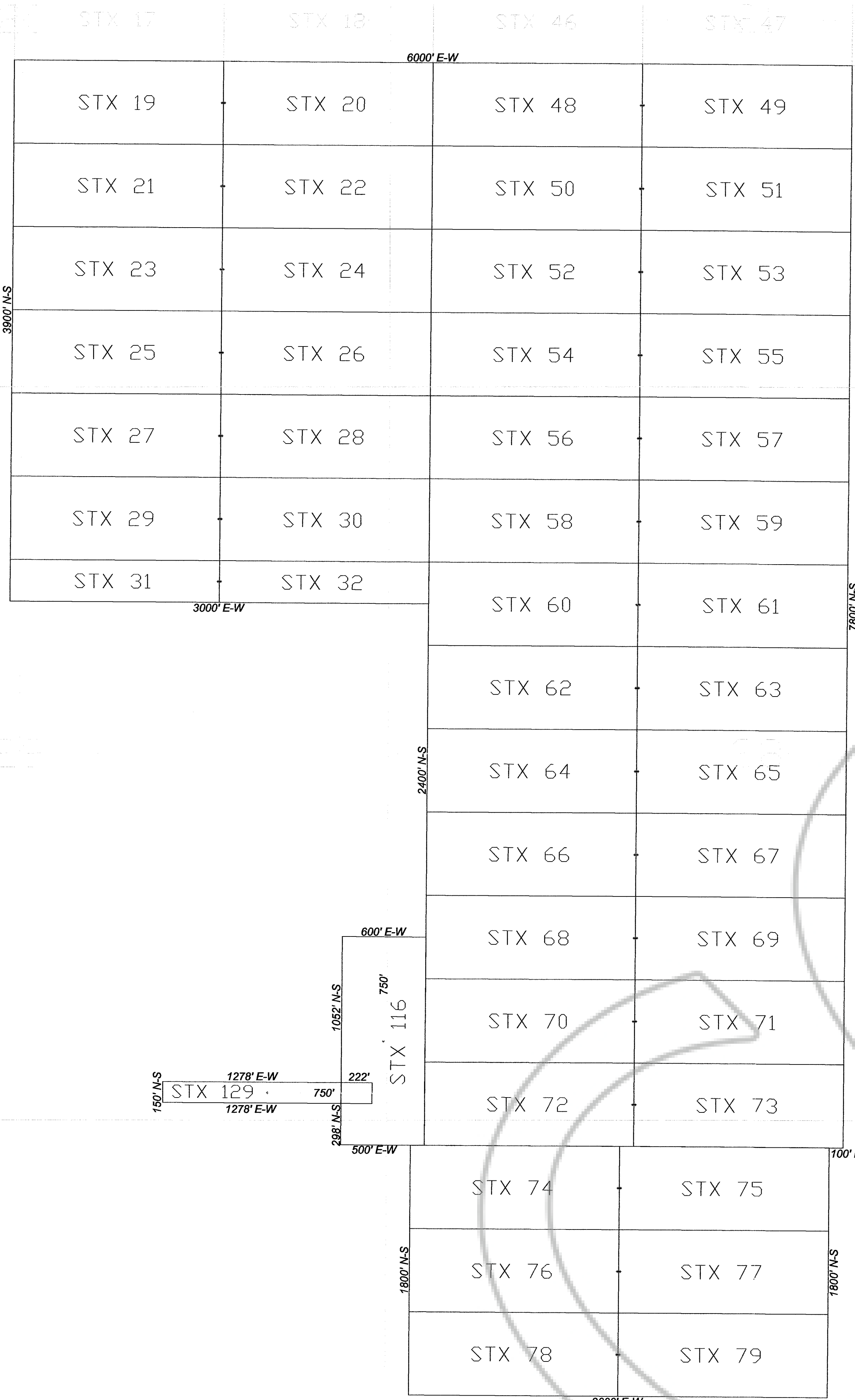


SCALE 1in=500ft
 U.S. Survey Foot
 Sections projected using
 Nevada BLM GCDB



CLAIM TIE:
 The NW corner of STX 89 is located approximately 20,614 feet south and 11,025 feet east of the NW corner of Section 20, T28N, R49E, M.D.M.

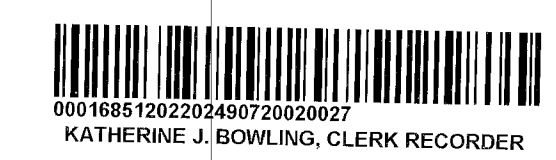
LODE MINING CLAIM MAP		
STX 1-116 & 129		
Sections 10-11, 14-17, 20-23, 28-29 & 32-33 T27N, R49E, M.D.M.		
EUREKA COUNTY, NEVADA		
Locator:		
Nevada Gold Mines LLC 1655 Mountain City Highway Elko, Nevada 89801		
Drawn By: ARD	November 2022	Sheet 1 of 2



NE corner of STX 49 is at approximately 4450991N 546581E (UTM NAD83 zone 11 meters)

EUREKA COUNTY, NV
 COUNTY CLERK
 Rec: \$1767.00
 Total: \$1,767.00
 NEVADA GOLD MINES LLC

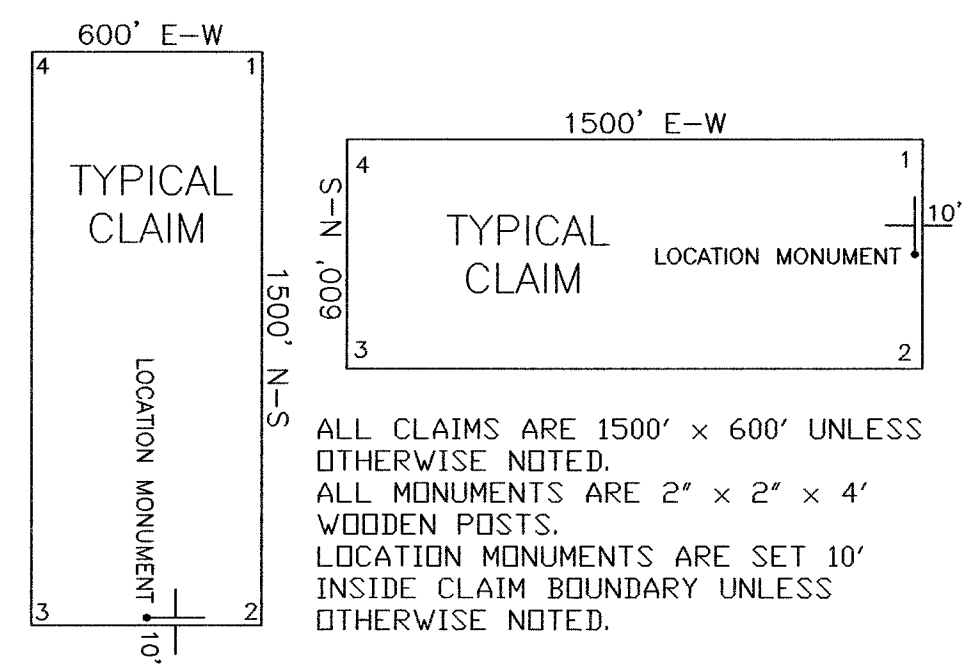
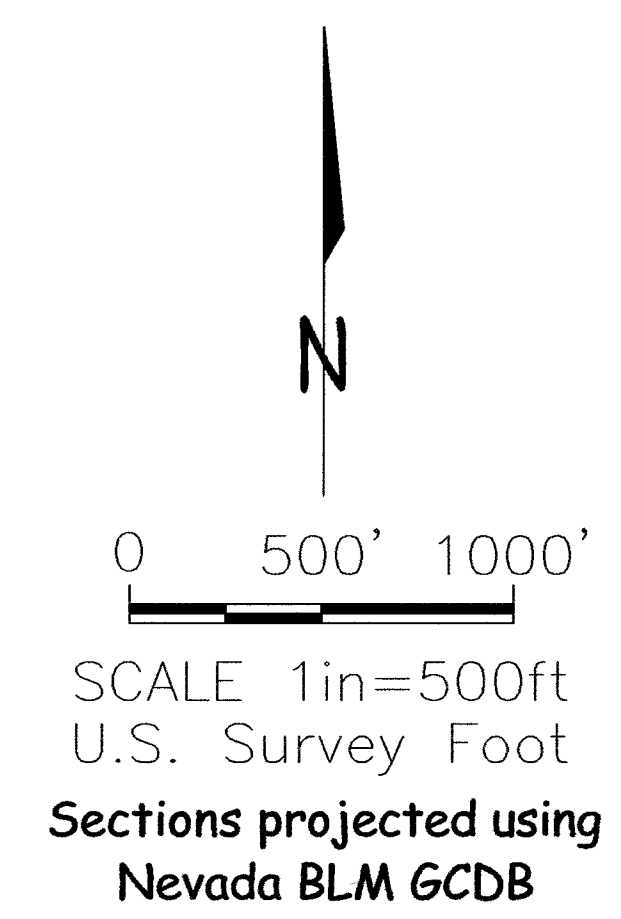
2022-249072
 11/30/2022 08:18 AM
 Pgs: 2



CLAIM LOCATION DATES:
 September 9, 2022: STX 1-59
 September 10, 2022: STX 60-116
 October 20, 2022: STX 129

CLAIM TIE:
 The NW corner of STX 19 is located approximately 28,959 feet south and 1,973 feet east of the NW corner of Section 20, T28N, R49E, M.D.M.

NOTES:
 STX 31-32 are approximately 1500 feet long and 300 feet wide.
 STX 129 is approximately 1500 feet long and 150 feet wide.
 The Location Monuments for STX 116 & 129 are located approximately 750 feet from the claim endlines along the centerline of the claims.



LODE MINING CLAIM MAP		
STX 1-116 & 129		
Sections 10-11, 14-17, 20-23, 28-29 & 32-33 T27N, R49E, M.D.M. EUREKA COUNTY, NEVADA		
Locator:		
Nevada Gold Mines LLC 1655 Mountain City Highway Elko, Nevada 89801		
Drawn By: ARD	November 2022	Sheet 2 of 2