

T27N R49E

29

MTB 437

MTB 439

MTB 436

MTB 438

MTB 440

MTB 441

750'

750'

300'

The NE Corner of MTB 441
bears S5°26'E and is 35,405'
from the NW corner of
Section 20 T28N R49E

EUREKA COUNTY, NV
MINING-MAP
Rec:\$72.00
Total:\$72.00
NEVADA GOLD MINES LLC

2023-249791
02/14/2023 02:00 PM
Pgs=1

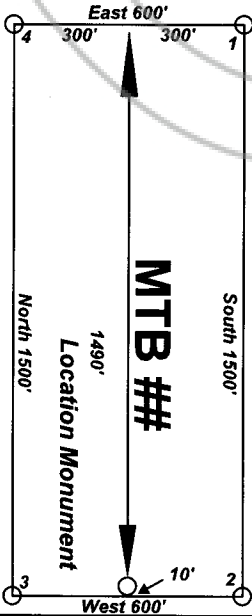


00017612202302497910010012
KATHERINE J. BOWLING, CLERK RECORDER

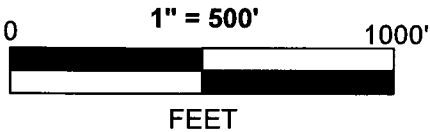
32

MTB lode claims 438-441
were located on October 27, 2013
and amended November 27, 2022

Map for Amended Lode Claims
MTB 438-441



Notes:
Location Monuments are set 10' from
claim end lines unless noted otherwise.
All location and corner monuments are
2" X 2" X 4' wooden posts with scribed
metal tags. All claims are 600' by 1500'
unless noted otherwise.



Map for Amended Lode Claims MTB 438-441
Sections 29 & 32 Township 27 North Range 49 East, MDM Eureka County, Nevada
Datum: 1927 Projection: UTM Zone 11 Units: Feet
Nevada Gold Mines LLC 1655 Mountain City Hwy Elko, NV 89801