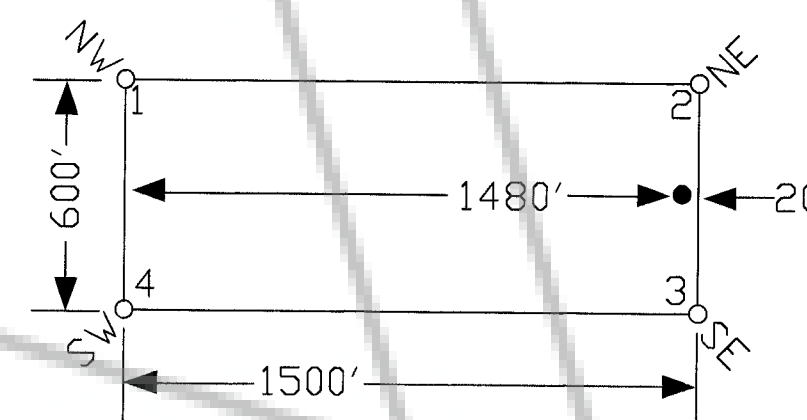


Scale 1" = 500'
1:6000

TYPICAL CLAIM



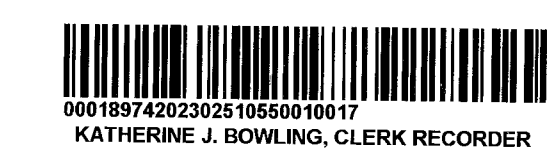
W 1	••	W 2
W 3	••	W 4
W 5	••	W 6
W 7	••	W 8
W 9	••	W 10
W 11	••	W 12
W 13	••	W 14

T.20N.,R.53E.
T.19N.,R.53E.

TIE POINT DATA:
THE SOUTHWEST CORNER OF W 11 LIES APPROXIMATELY
180 FEET SOUTH AND 20 FEET WEST OF THE SURVEYED
SOUTHWEST CORNER OF SECTION 1, T.19N., R.53E., M.D.B.M.

LOCATION DATE:
September 2, 2023: W 1-14

EUREKA COUNTY, NV 2023-251055
MINING-MAP
Rev: \$222.00 09/12/2023 01:52 PM
Total: \$222.00
NORTH POINT EXPLORATION, LLC Pg# 1



NOTES:
LOCATION MONUMENTS SET 20' FROM CLAIM END
CENTERLINES. ALL LOCATION MONUMENTS AND CLAIM
POSTS ARE 2"x2"x4' WOODEN STAKES.

	Locator: North Point Exploration 3290 Argent Ave., Elko, Nevada 89801 W 1-14 Lode Claims T.19&20N.,R.53E.; Eureka County, Nevada	
	DATE: September 2023	ACAD FILE NAME: client\23\carlinpoint\eurko\w0923.dwg PLOT SCALE: 1" = 500'
369 - 5th STREET PH: (775) 778-0668 ELKO, NV 89801 FAX: (775) 778-0687		