

03

02

1	4	1	4
NW.cor	NE.cor	NW.cor	NE.cor

600'			
RME 184		RME 186	
LOC. MON. 3			
2	3	2	3
SW.cor	SE.cor	SW.cor	SE.cor
1	4	1	4
NW.cor	NE.cor	NW.cor	NE.cor

RME 185		RME 187	
2	3	2	3
SW.cor	SE.cor	SW.cor	SE.cor
1	4	1	4
NW.cor	NE.cor	NW.cor	NE.cor

RME 197		RME 199		RME 201		RME 203		RME 205		RME 207	
2	3	2	3	2	3	2	3	2	3	2	3
SW.cor	SE.cor	SW.cor	SE.cor	SW.cor	SE.cor	SW.cor	SE.cor	SW.cor	SE.cor	SW.cor	SE.cor
1	4	1	4	1	4	1	4	1	4	1	4
NW.cor	NE.cor	NW.cor	NE.cor	NW.cor	NE.cor	NW.cor	NE.cor	NW.cor	NE.cor	NW.cor	NE.cor

RME 198		RME 200		RME 202		RME 204		RME 206		RME 208		RME 209		RME 210	
2	3	2	3	2	3	2	3	2	3	2	3	2	3	2	3
SW.cor	SE.cor	SW.cor	SE.cor	SW.cor	SE.cor	SW.cor	SE.cor	SW.cor	SE.cor	SW.cor	SE.cor	SW.cor	SE.cor	SW.cor	SE.cor
1	4	1	4	1	4	1	4	1	4	1	4	1	4	1	4
NW.cor	NE.cor	NW.cor	NE.cor	NW.cor	NE.cor	NW.cor	NE.cor	NW.cor	NE.cor	NW.cor	NE.cor	NW.cor	NE.cor	NW.cor	NE.cor

RME 217		RME 219		RME 221		RME 222		RME 223		RME 224		RME 225		RME 226		RME 227		RME 228		RME 229	
2	3	2	3	2	3	2	3	2	3	2	3	2	3	2	3	2	3	2	3	2	3
SW.cor	SE.cor	SW.cor	SE.cor	SW.cor	SE.cor	SW.cor	SE.cor	SW.cor	SE.cor	SW.cor	SE.cor	SW.cor	SE.cor	SW.cor	SE.cor	SW.cor	SE.cor	SW.cor	SE.cor	SW.cor	SE.cor
1	4	1	4	1	4	1	4	1	4	1	4	1	4	1	4	1	4	1	4	1	4
NW.cor	NE.cor	NW.cor	NE.cor	NW.cor	NE.cor	NW.cor	NE.cor	NW.cor	NE.cor	NW.cor	NE.cor	NW.cor	NE.cor	NW.cor	NE.cor	NW.cor	NE.cor	NW.cor	NE.cor	NW.cor	NE.cor

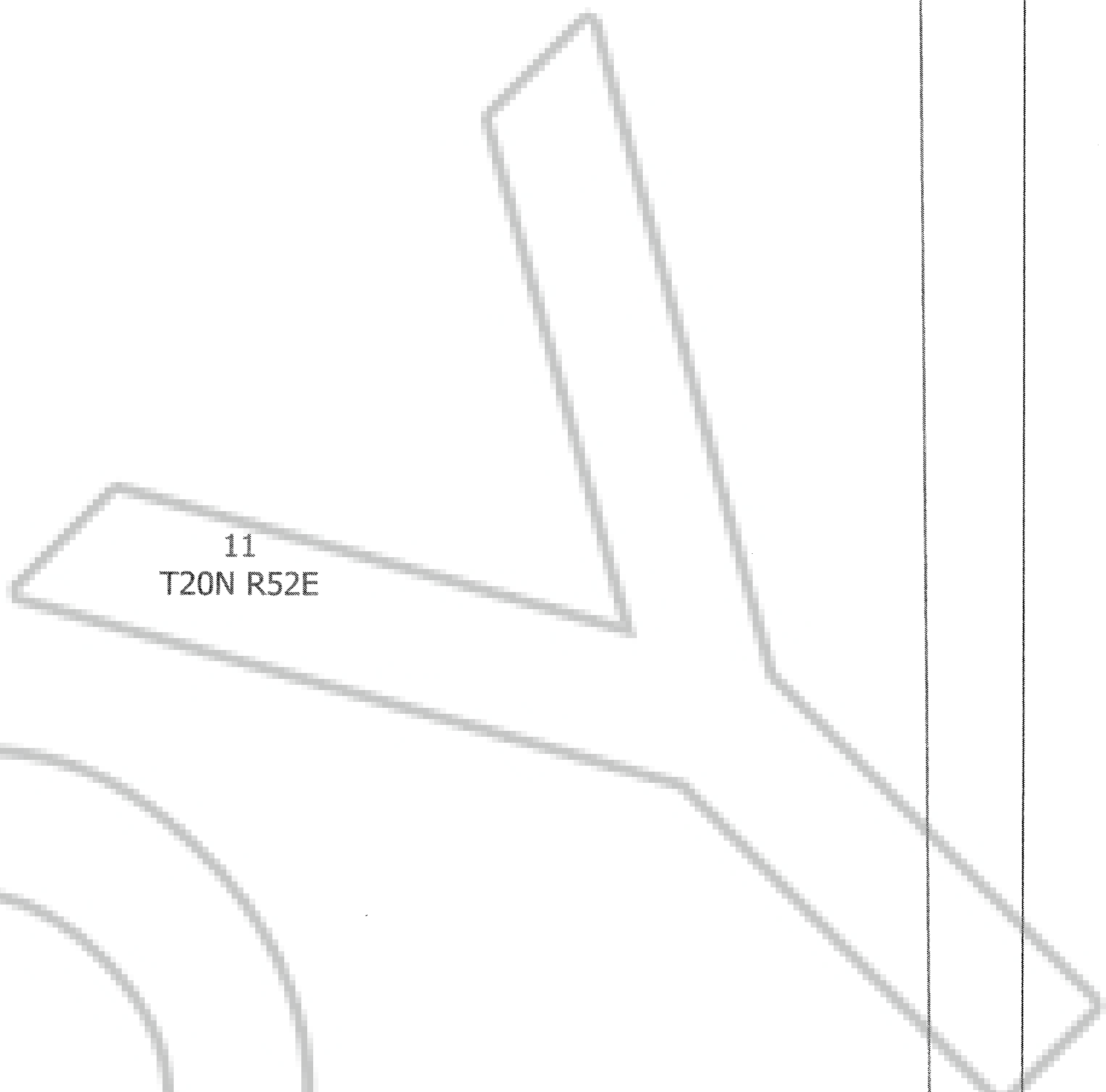
RME 218		RME 220	
2	3	2	3
SW.cor	SE.cor	SW.cor	SE.cor
1	4	1	4
NW.cor	NE.cor	NW.cor	NE.cor

RME 236		RME 238	
2	3	2	3
SW.cor	SE.cor	SW.cor	SE.cor
1	4	1	4
NW.cor	NE.cor	NW.cor	NE.cor

RME 237		RME 239		RME 240		RME 242	
2	3	2	3	2	3	2	3
SW.cor	SE.cor	SW.cor	SE.cor	SW.cor	SE.cor	SW.cor	SE.cor
1	4	1	4	1	4	1	4
NW.cor	NE.cor	NW.cor	NE.cor	NW.cor	NE.cor	NW.cor	NE.cor

RME 241		RME 243	
2	3	2	3
SW.cor	SE.cor	SW.cor	SE.cor
1	4	1	4
NW.cor	NE.cor	NW.cor	NE.cor

Tie from SE Cor. of Sec. 15, T20N R52E
to NE Cor. of RME 242
is 1295' at a 280 Deg. Az.



14

15

23

MAP OF RME 184-187, 197-210, 217-229, 236-243 LODE CLAIMS

EUREKA COUNTY, NEVADA, UNKNOWN MINING DISTRICT
LOCATED ON JAN. 27, 2024
LOCATED BY BIG CASINO CORP.
1675 SOUTH STATE STREET, SUITE B,
DOVER, DELAWARE 19901
CLAIMS IN SECTIONS 10-11, 14-15, 22, T.20N R.52E

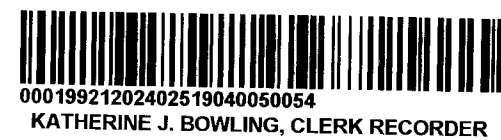


1"=500'

NOTE: ALL MONUMENTS ARE
2"X2"X4" WOODEN POSTS
WITH METAL TAGS ATTACHED
ALL LOCATION MONUMENTS INSET 10 FEET
FROM END-LINE UNLESS OTHERWISE NOTED

EUREKA COUNTY, NV
MINING-340P
Rec: \$2097.00
Total: \$2,097.00
BIG CASINO CORP

2024-251904
03/25/2024 03:06 PM
Pgs:5



KATHERINE J. BOWLING, CLERK RECORDER

2025

06
T21N R50E

05

04

600'																													
1	4	1	4	1	4	1	4	1	4	1	4	1	4	1	4	1	4	1	4	1	4	1	4	1	4				
NW.cor	NE.cor	NW.cor	NE.cor	NW.cor	NE.cor	NW.cor	NE.cor	NW.cor	NE.cor	NW.cor	NE.cor	NW.cor	NE.cor	NW.cor	NE.cor	NW.cor	NE.cor	NW.cor	NE.cor	NW.cor	NE.cor	NW.cor	NE.cor	NW.cor	NE.cor				
1500'																													
RMW 139		RMW 141		RMW 143		RMW 145		RMW 147		RMW 149		RMW 151		RMW 153		RMW 155		RMW 157		RMW 159		RMW 161		RMW 163		RMW 165		RMW 167	
LOC. MON.		2		3		2		3		2		3		2		3		2		3		2		3		2		3	
SW.cor	SE.cor	SW.cor	SE.cor	SW.cor	SE.cor	SW.cor	SE.cor	SW.cor	SE.cor	SW.cor	SE.cor	SW.cor	SE.cor	SW.cor	SE.cor	SW.cor	SE.cor	SW.cor	SE.cor	SW.cor	SE.cor	SW.cor	SE.cor	SW.cor	SE.cor	SW.cor	SE.cor	SW.cor	SE.cor
1	4	1	4	1	4	1	4	1	4	1	4	1	4	1	4	1	4	1	4	1	4	1	4	1	4	1	4	1	4
NW.cor	NE.cor	NW.cor	NE.cor	NW.cor	NE.cor	NW.cor	NE.cor	NW.cor	NE.cor	NW.cor	NE.cor	NW.cor	NE.cor	NW.cor	NE.cor	NW.cor	NE.cor	NW.cor	NE.cor	NW.cor	NE.cor	NW.cor	NE.cor	NW.cor	NE.cor	NW.cor	NE.cor	NW.cor	NE.cor
RMW 140		RMW 142		RMW 144		RMW 146		RMW 148		RMW 150		RMW 152		RMW 154		RMW 156		RMW 158		RMW 160		RMW 162		RMW 164		RMW 166		RMW 168	
2	3	2	3	2	3	2	3	2	3	2	3	2	3	2	3	2	3	2	3	2	3	2	3	2	3	2	3	2	3
SW.cor	SE.cor	SW.cor	SE.cor	SW.cor	SE.cor	SW.cor	SE.cor	SW.cor	SE.cor	SW.cor	SE.cor	SW.cor	SE.cor	SW.cor	SE.cor	SW.cor	SE.cor	SW.cor	SE.cor	SW.cor	SE.cor	SW.cor	SE.cor	SW.cor	SE.cor	SW.cor	SE.cor	SW.cor	SE.cor

Tie from NW Cor. of Sec. 9, T21N R50E
to SE Cor. of RMW 162
is 526' at a 157 Deg. Az.

07

08

09

17

18

16

MAP OF RMW 139-168 LODE CLAIMS
 EUREKA COUNTY, NEVADA, UNKNOWN MINING DISTRICT
 LOCATED ON JAN. 29, 2024
 LOCATED BY BIG CASINO CORP.
 1675 SOUTH STATE STREET, SUITE B,
 DOVER, DELAWARE 19901
 CLAIMS IN SECTIONS 04-09, T.21N R.50E

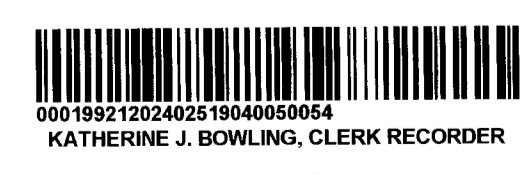


1"=500'

NOTE: ALL MONUMENTS ARE
 2"x2"x4" WOODEN POSTS
 WITH METAL TAGS ATTACHED
 ALL LOCATION MONUMENTS INSET 10 FEET
 FROM END-LINE UNLESS OTHERWISE NOTED

EUREKA COUNTY, NV
 MINING-MAP
 Rec: 2024/03
 Total: \$2,097.00
 BIG CASINO CORP

2024-251904
 03/25/2024 03:06 PM
 Pgs: 5



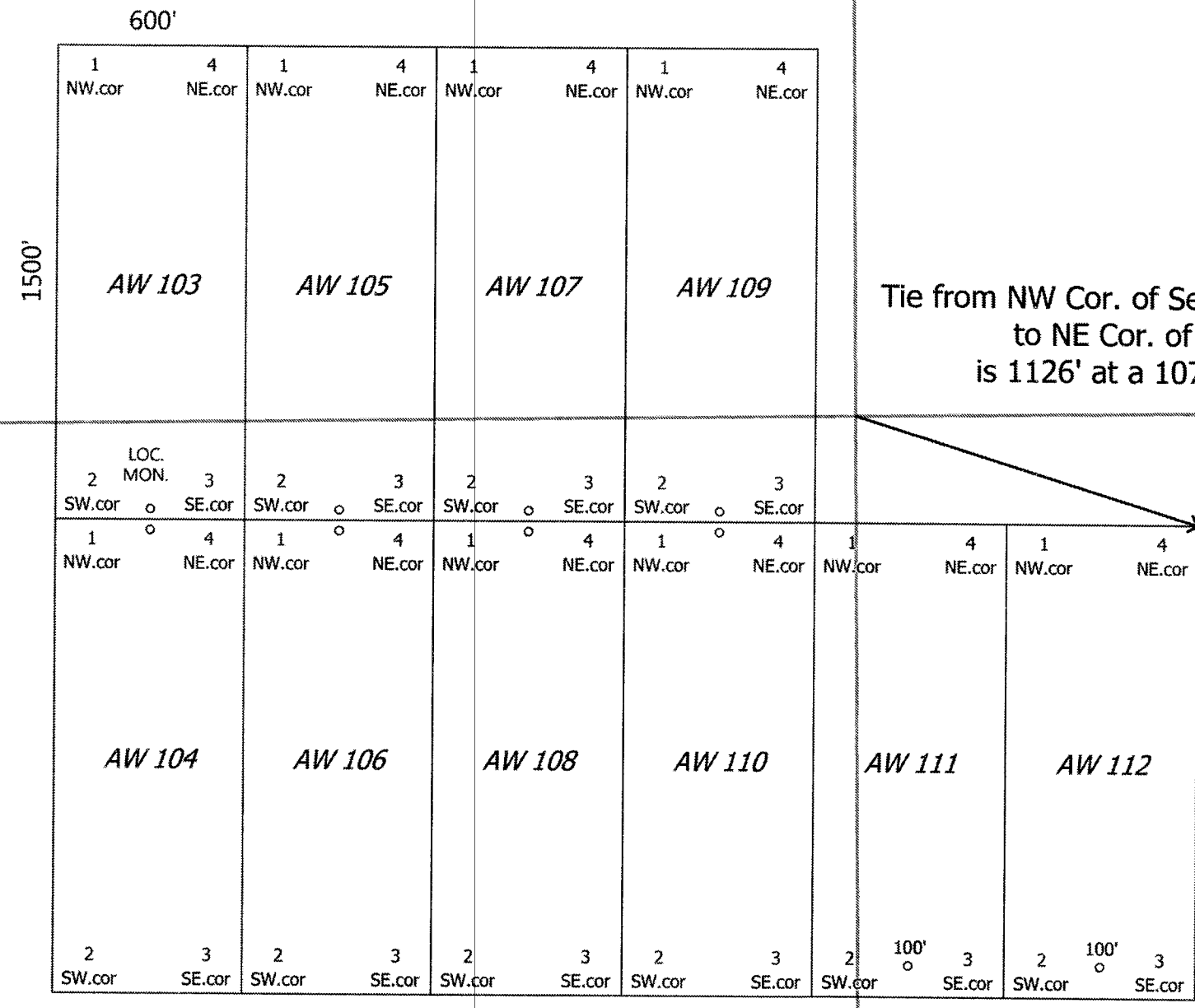
KATHERINE J. BOWLING, CLERK RECORDER

305

21

22

23



Tie from NW Cor. of Sec. 26, T20N R52E
to NE Cor. of AW 112
is 1126' at a 107.5 Deg. Az.

28

27

26

35

33

34
T20N R52E

MAP OF AW 103-112 LODGE CLAIMS

EUREKA COUNTY, NEVADA, UNKNOWN MINING DISTRICT
LOCATED ON JAN. 24, 2024
LOCATED BY BIG CASINO CORP.
1675 SOUTH STATE STREET, SUITE B,
DOVER, DELAWARE 19901
CLAIMS IN SECTIONS 22, 26-27, T.20N R.52E



1"=500'

NOTE: ALL MONUMENTS ARE
2"X2"X4" WOODEN POSTS
WITH METAL TAGS ATTACHED
ALL LOCATION MONUMENTS INSET 10 FEET
FROM END-LINE UNLESS OTHERWISE NOTED

03

02

01

10
T19N R52E

11

12

EUREKA COUNTY, NV
MINING MAP
Rec: \$2097.00
Total: \$2,097.00
BIG CASINO CORP

2024-251904
03/25/2024 03:06 PM
Pg: 5



KATHERINE J. BOWLING, CLERK RECORDER

4105

26

25

30

600'

1 NW.cor 4 NE.cor

AW 149

LOC MON 3

2 SW.cor 3 SE.cor

1 NW.cor 4 NE.cor

AW 150

AW 151

AW 152

2 SW.cor 3 SE.cor

2 SW.cor 3 SE.cor

2 SW.cor 3 SE.cor

36
T20N R52E

1 NW.cor 4 NE.cor

1 NW.cor 4 NE.cor

1 NW.cor 4 NE.cor

AW 159

AW 161

AW 163

2 SW.cor 3 SE.cor

2 SW.cor 3 SE.cor

2 SW.cor 3 SE.cor

1 NW.cor 4 NE.cor

1 NW.cor 4 NE.cor

1 NW.cor 4 NE.cor

1 NW.cor 4 NE.cor

AW 160

AW 162

AW 164

AW 165

AW 166

2 SW.cor 3 SE.cor

2 SW.cor 3 SE.cor

2 SW.cor 3 SE.cor

2 SW.cor 3 SE.cor

01

AW 173

AW 175

AW 177

AW 179

2 SW.cor 3 SE.cor

2 SW.cor 3 SE.cor

2 SW.cor 3 SE.cor

2 SW.cor 3 SE.cor

1 NW.cor 4 NE.cor

1 NW.cor 4 NE.cor

1 NW.cor 4 NE.cor

1 NW.cor 4 NE.cor

AW 174

AW 176

AW 178

AW 180

2 SW.cor 3 SE.cor

2 SW.cor 3 SE.cor

2 SW.cor 3 SE.cor

2 SW.cor 3 SE.cor

1 NW.cor 4 NE.cor

1 NW.cor 4 NE.cor

1 NW.cor 4 NE.cor

1 NW.cor 4 NE.cor

AW 181

AW 183

AW 185

AW 187

2 SW.cor 3 SE.cor

2 SW.cor 3 SE.cor

2 SW.cor 3 SE.cor

2 SW.cor 3 SE.cor

1 NW.cor 4 NE.cor

1 NW.cor 4 NE.cor

1 NW.cor 4 NE.cor

1 NW.cor 4 NE.cor

AW 182

AW 184

AW 186

AW 188

2 SW.cor 3 SE.cor

2 SW.cor 3 SE.cor

2 SW.cor 3 SE.cor

2 SW.cor 3 SE.cor

1 NW.cor 4 NE.cor

1 NW.cor 4 NE.cor

1 NW.cor 4 NE.cor

1 NW.cor 4 NE.cor

12
T19N R52E

07

06
T19N R53E

31
T20N R53E

MAP OF AW 149-152, 159-166, 173-188 LODE CLAIMS

EUREKA COUNTY, NEVADA, UNKNOWN MINING DISTRICT
LOCATED ON JAN. 24, 26, 2024
LOCATED BY BIG CASINO CORP.
1675 SOUTH STATE STREET, SUITE B,
DOVER, DELAWARE 19901
CLAIMS IN SECTIONS 01, 12, T.19N R.52E
AND SECTION 36, T.20N R.52E



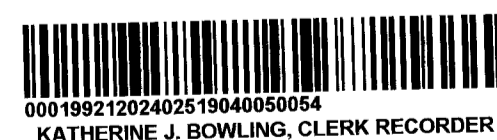
1"=500'

NOTE: ALL MONUMENTS ARE
2"X2"X4' WOODEN POSTS
WITH METAL TAGS ATTACHED
ALL LOCATION MONUMENTS INSET 10 FEET
FROM END-LINE UNLESS OTHERWISE NOTED

Tie from SE Cor. of Sec. 12, T19N R52E
to SE Cor. of AW 188
is 195' at a 340 Deg. Az.

EUREKA COUNTY, NV
MINING MAP
Rec: 3/25/24
Total: \$2,097.00
BIG CASINO CORP

2024-251904
03/25/2024 03:06 PM
Pg=5



KATHERINE J. BOWLING, CLERK RECORDER

5105

13

18